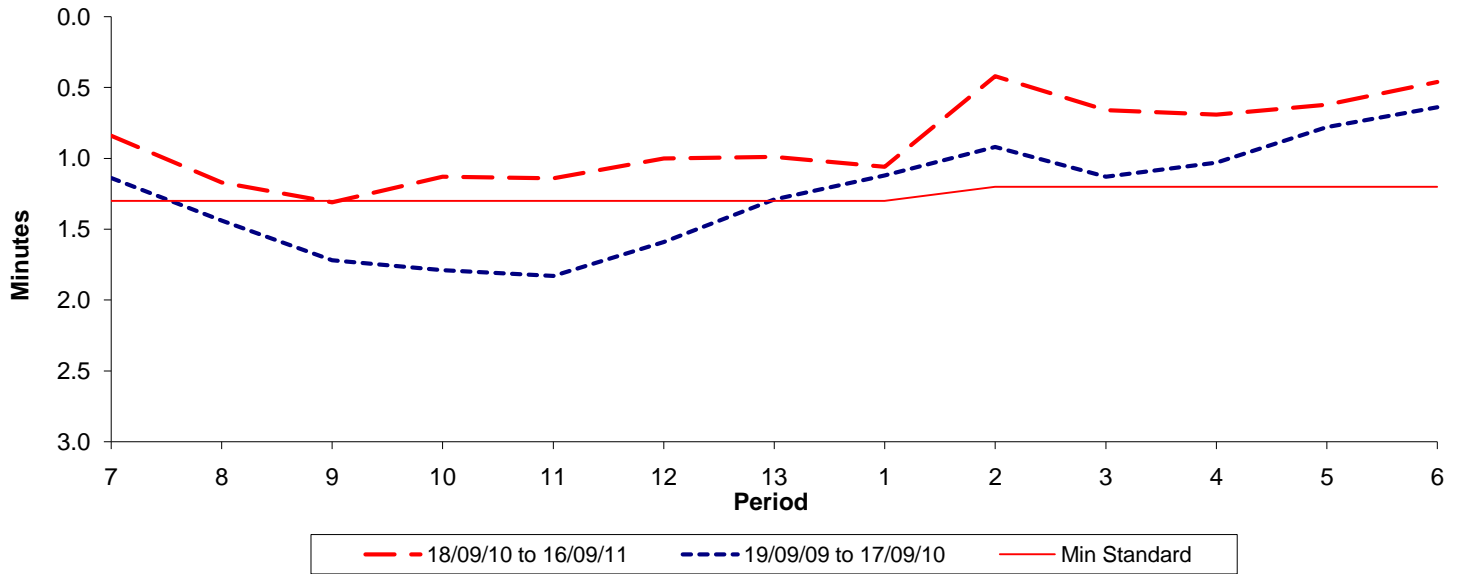




**Reliability Performance ( High Frequency )**

Excess Waiting Time (minutes)

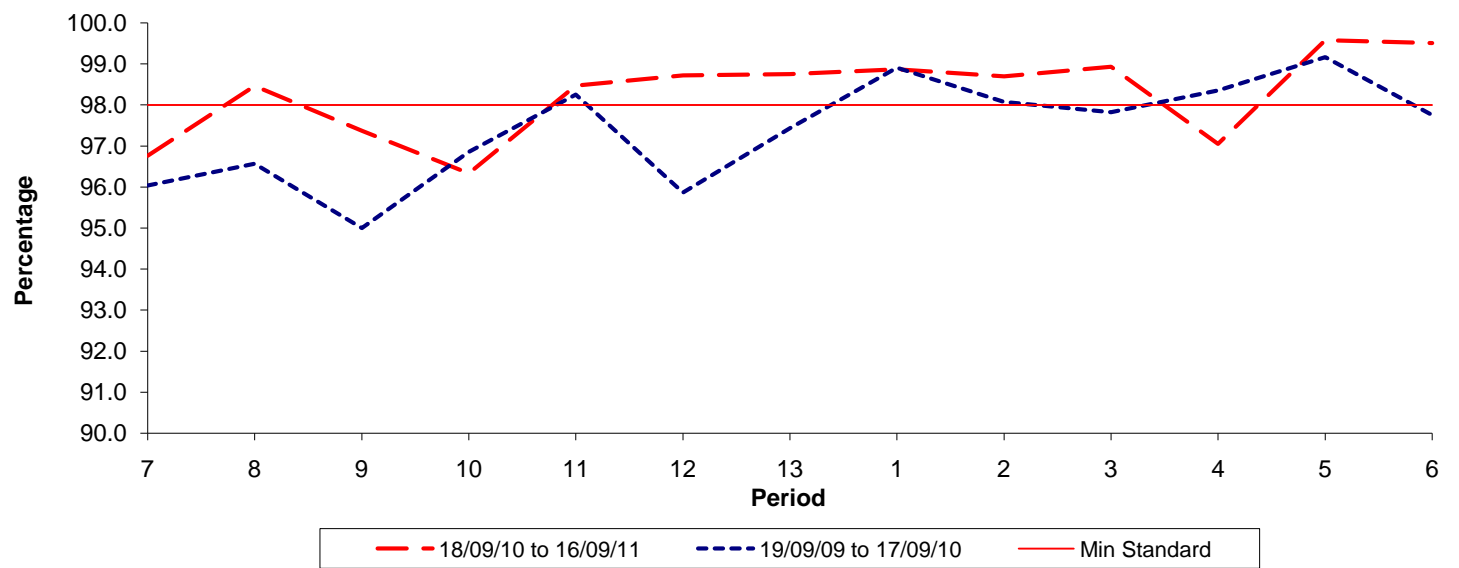


Date Range / Period	7	8	9	10	11	12	13	1	2	3	4	5	6
18/09/10 to 16/09/11	0.84	1.17	1.31	1.13	1.14	1.00	0.99	1.06	0.42	0.66	0.69	0.62	0.46
19/09/09 to 17/09/10	1.14	1.44	1.72	1.79	1.83	1.59	1.29	1.12	0.92	1.13	1.03	0.78	0.64
Min Standard	1.30	1.30	1.30	1.30	1.30	1.30	1.30	1.30	1.20	1.20	1.20	1.20	1.20

Excess Waiting Time figures are based on 12 weeks data

**Kilometre Performance**

% Kilometres Operated



Date Range / Period	7	8	9	10	11	12	13	1	2	3	4	5	6
18/09/10 to 16/09/11	96.76	98.46	97.37	96.33	98.47	98.72	98.75	98.87	98.70	98.93	97.05	99.58	99.51
19/09/09 to 17/09/10	96.04	96.57	95.00	96.86	98.26	95.87	97.44	98.91	98.08	97.83	98.36	99.17	97.76
Min Standard	98.00	98.00	98.00	98.00	98.00	98.00	98.00	98.00	98.00	98.00	98.00	98.00	98.00

Kilometre figures are based on 4 weeks data