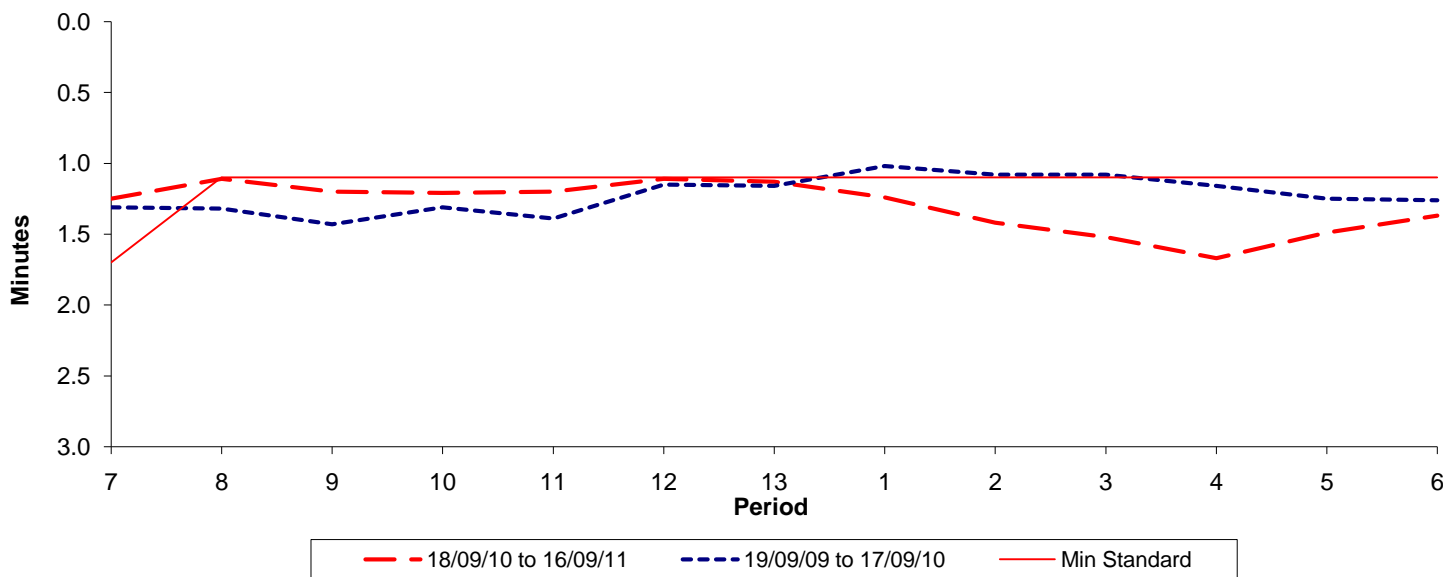




Reliability Performance (High Frequency)

Excess Waiting Time (minutes)

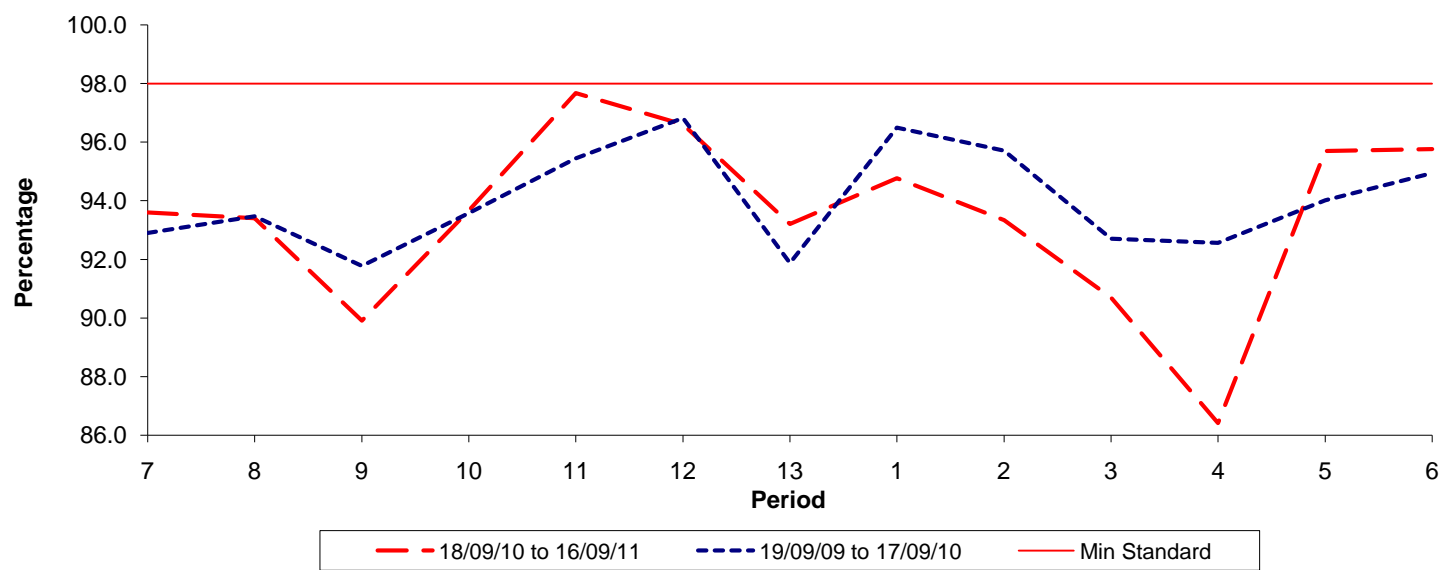


Date Range / Period	7	8	9	10	11	12	13	1	2	3	4	5	6
18/09/10 to 16/09/11	1.25	1.11	1.20	1.21	1.20	1.11	1.13	1.24	1.42	1.52	1.67	1.49	1.37
19/09/09 to 17/09/10	1.31	1.32	1.43	1.31	1.39	1.15	1.16	1.02	1.08	1.08	1.16	1.25	1.26
Min Standard	1.70	1.10	1.10	1.10	1.10	1.10	1.10	1.10	1.10	1.10	1.10	1.10	1.10

Excess Waiting Time figures are based on 12 weeks data

Kilometre Performance

% Kilometres Operated



Date Range / Period	7	8	9	10	11	12	13	1	2	3	4	5	6
18/09/10 to 16/09/11	93.59	93.40	89.91	93.66	97.67	96.60	93.21	94.77	93.34	90.69	86.41	95.70	95.76
19/09/09 to 17/09/10	92.90	93.47	91.77	93.57	95.44	96.82	91.87	96.49	95.71	92.70	92.56	94.01	94.94
Min Standard	98.00	98.00	98.00	98.00	98.00	98.00	98.00	98.00	98.00	98.00	98.00	98.00	98.00

Kilometre figures are based on 4 weeks data