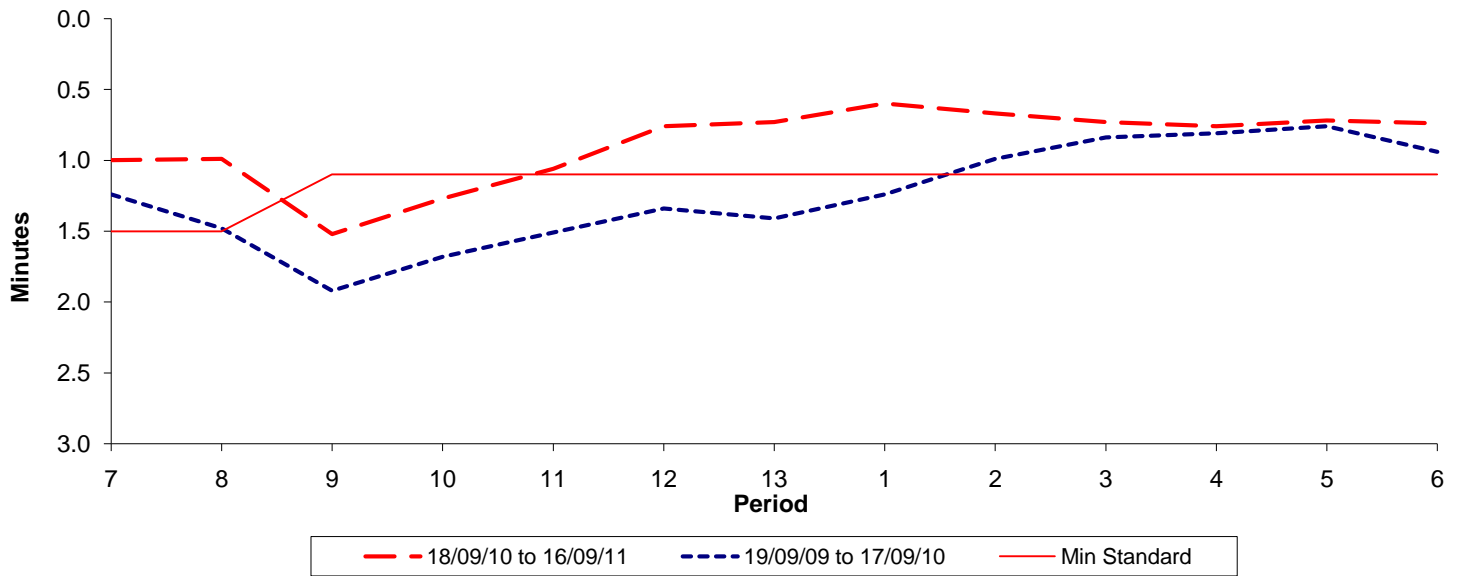




**Reliability Performance ( High Frequency )**

Excess Waiting Time (minutes)

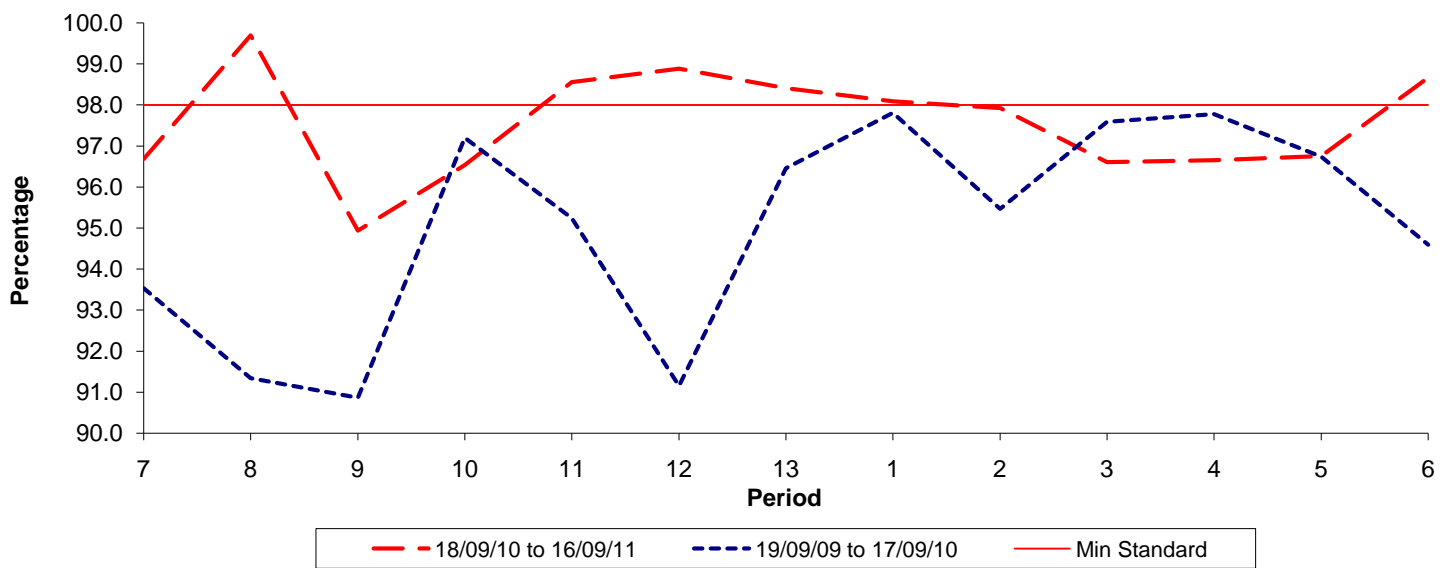


Date Range / Period	7	8	9	10	11	12	13	1	2	3	4	5	6
18/09/10 to 16/09/11	1.00	0.99	1.52	1.27	1.06	0.76	0.73	0.60	0.67	0.73	0.76	0.72	0.74
19/09/09 to 17/09/10	1.24	1.48	1.92	1.68	1.51	1.34	1.41	1.24	0.99	0.84	0.81	0.76	0.94
Min Standard	1.50	1.50	1.10	1.10	1.10	1.10	1.10	1.10	1.10	1.10	1.10	1.10	1.10

Excess Waiting Time figures are based on 12 weeks data

**Kilometre Performance**

% Kilometres Operated



Date Range / Period	7	8	9	10	11	12	13	1	2	3	4	5	6
18/09/10 to 16/09/11	96.69	99.70	94.94	96.54	98.56	98.89	98.41	98.09	97.93	96.61	96.66	96.76	98.67
19/09/09 to 17/09/10	93.53	91.34	90.86	97.20	95.24	91.15	96.46	97.81	95.47	97.59	97.78	96.74	94.59
Min Standard	98.00	98.00	98.00	98.00	98.00	98.00	98.00	98.00	98.00	98.00	98.00	98.00	98.00

Kilometre figures are based on 4 weeks data