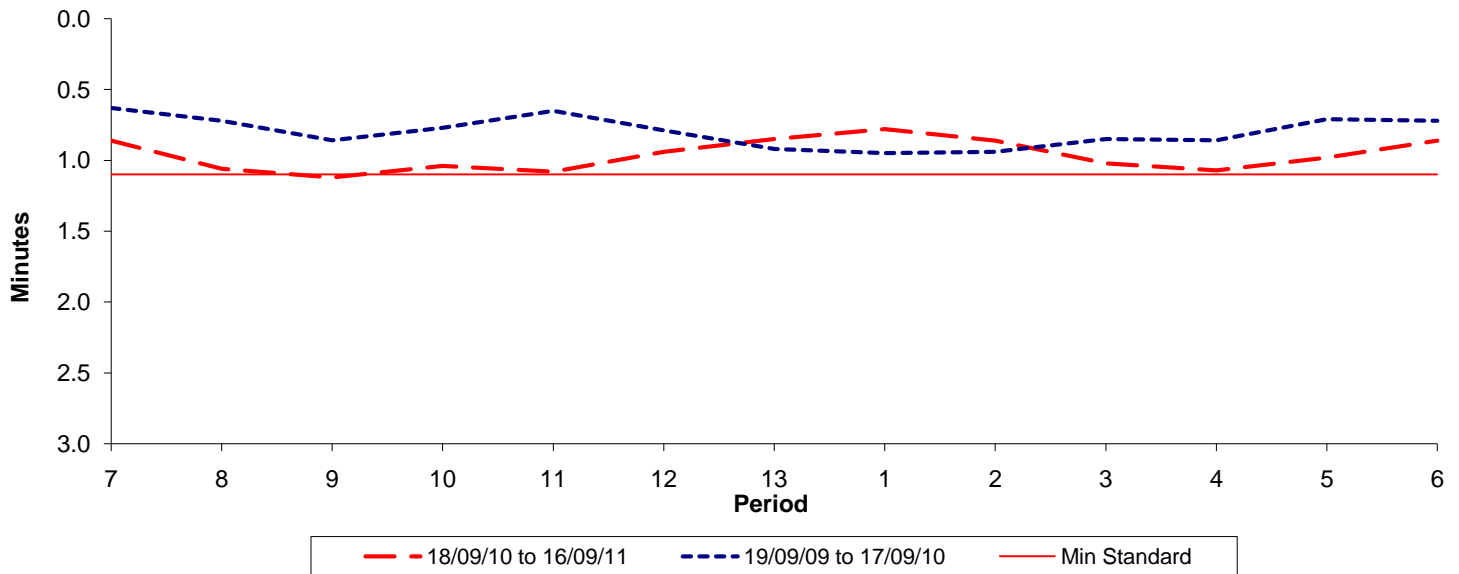




Reliability Performance (High Frequency)

Excess Waiting Time (minutes)

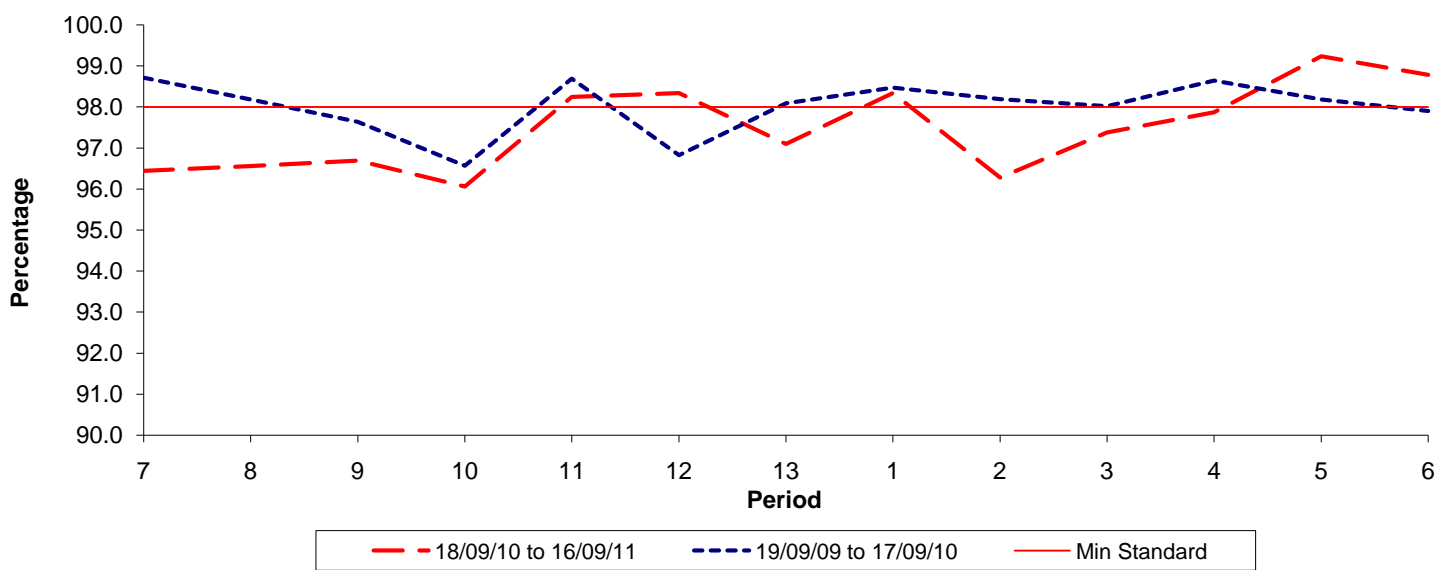


Date Range / Period	7	8	9	10	11	12	13	1	2	3	4	5	6
18/09/10 to 16/09/11	0.86	1.06	1.12	1.04	1.08	0.94	0.85	0.78	0.86	1.02	1.07	0.98	0.86
19/09/09 to 17/09/10	0.63	0.72	0.86	0.77	0.65	0.79	0.92	0.95	0.94	0.85	0.86	0.71	0.72
Min Standard	1.10	1.10	1.10	1.10	1.10	1.10	1.10	1.10	1.10	1.10	1.10	1.10	1.10

Excess Waiting Time figures are based on 12 weeks data

Kilometre Performance

% Kilometres Operated



Date Range / Period	7	8	9	10	11	12	13	1	2	3	4	5	6
18/09/10 to 16/09/11	96.44	96.56	96.69	96.06	98.25	98.34	97.10	98.34	96.28	97.38	97.87	99.24	98.79
19/09/09 to 17/09/10	98.71	98.18	97.64	96.57	98.69	96.83	98.09	98.47	98.19	98.02	98.64	98.18	97.90
Min Standard	98.00	98.00	98.00	98.00	98.00	98.00	98.00	98.00	98.00	98.00	98.00	98.00	98.00

Kilometre figures are based on 4 weeks data