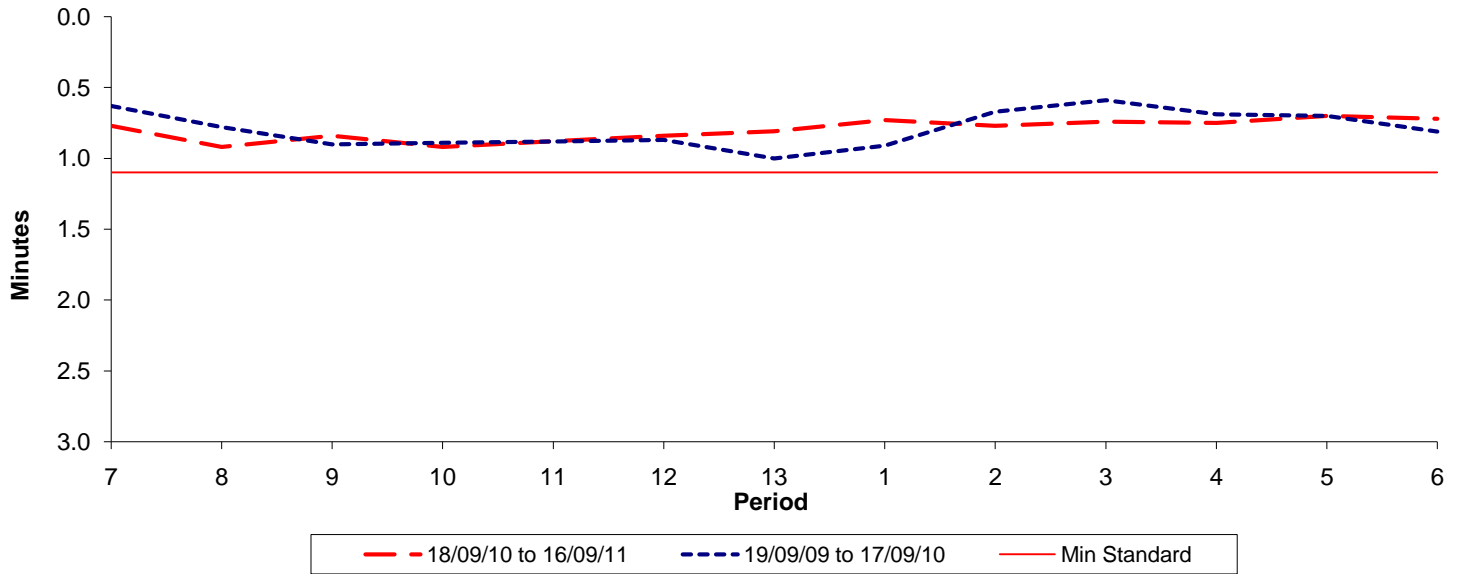




Reliability Performance (High Frequency)

Excess Waiting Time (minutes)

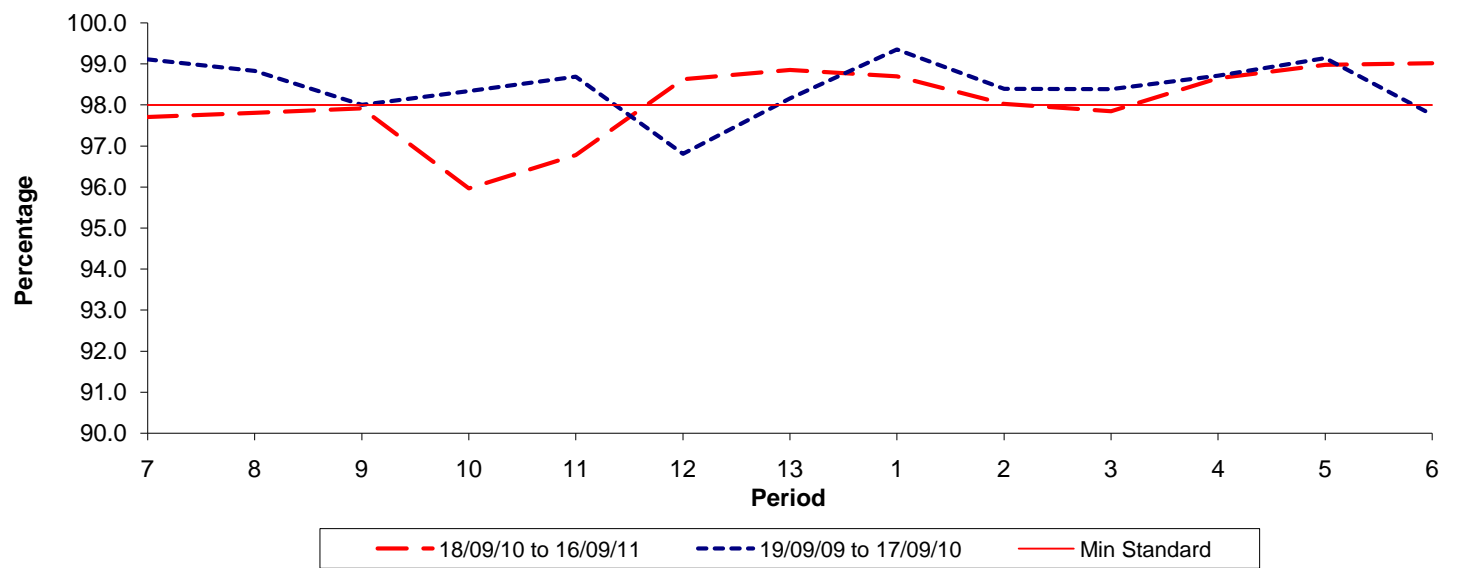


Date Range / Period	7	8	9	10	11	12	13	1	2	3	4	5	6
18/09/10 to 16/09/11	0.77	0.92	0.84	0.92	0.88	0.84	0.81	0.73	0.77	0.74	0.75	0.70	0.72
19/09/09 to 17/09/10	0.63	0.78	0.90	0.89	0.88	0.87	1.00	0.91	0.67	0.59	0.69	0.70	0.81
Min Standard	1.10	1.10	1.10	1.10	1.10	1.10	1.10	1.10	1.10	1.10	1.10	1.10	1.10

Excess Waiting Time figures are based on 12 weeks data

Kilometre Performance

% Kilometres Operated



Date Range / Period	7	8	9	10	11	12	13	1	2	3	4	5	6
18/09/10 to 16/09/11	97.71	97.81	97.92	95.97	96.78	98.63	98.86	98.70	98.03	97.85	98.65	98.98	99.02
19/09/09 to 17/09/10	99.11	98.83	98.00	98.34	98.69	96.81	98.16	99.35	98.39	98.38	98.71	99.14	97.76
Min Standard	98.00	98.00	98.00	98.00	98.00	98.00	98.00	98.00	98.00	98.00	98.00	98.00	98.00

Kilometre figures are based on 4 weeks data