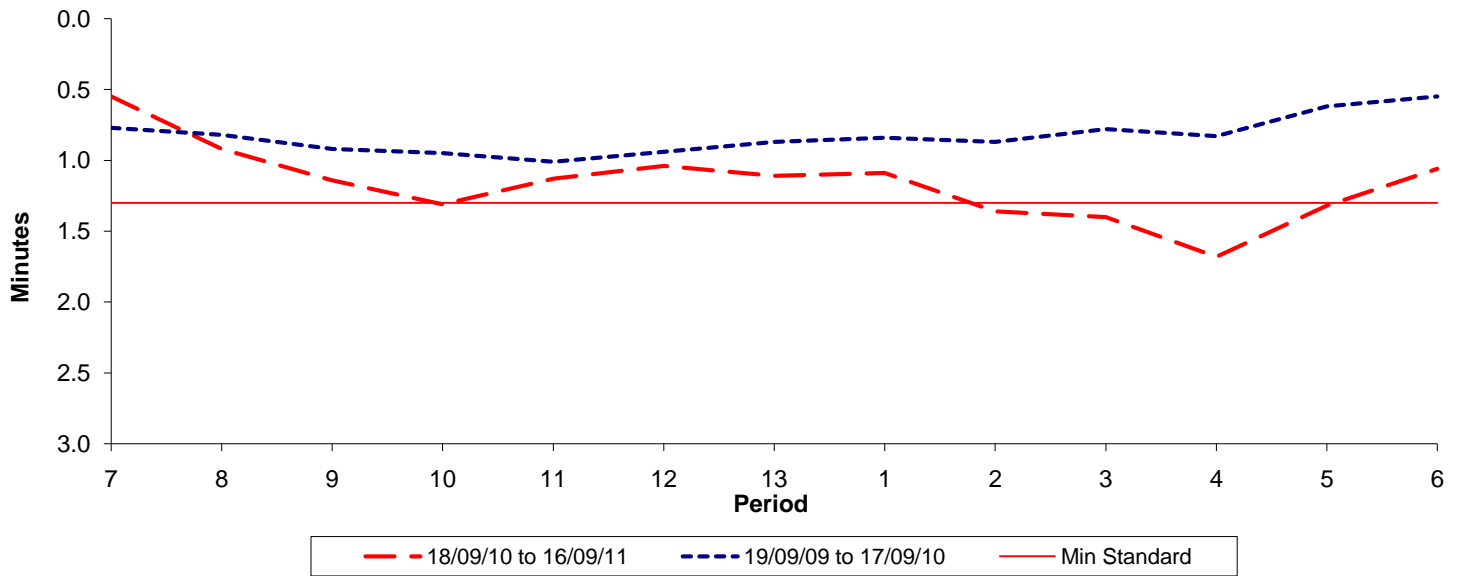




**Reliability Performance ( High Frequency )**

**Excess Waiting Time (minutes)**

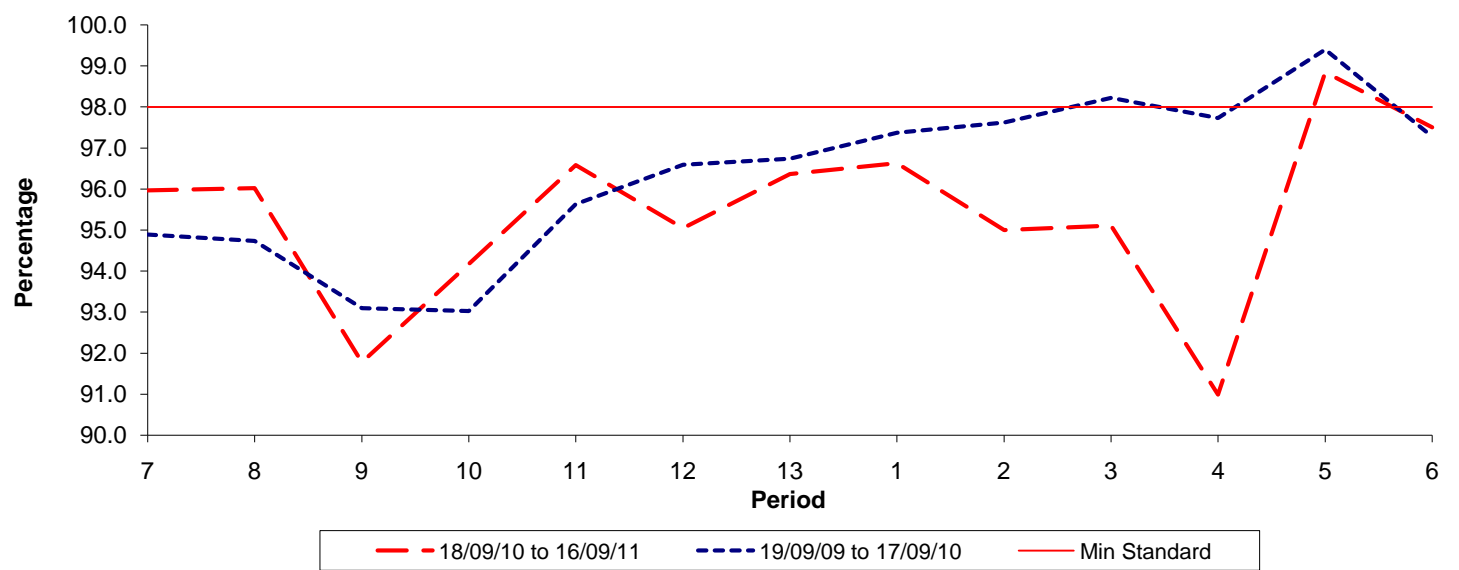


Date Range / Period	7	8	9	10	11	12	13	1	2	3	4	5	6
18/09/10 to 16/09/11	0.55	0.92	1.14	1.31	1.13	1.04	1.11	1.09	1.36	1.40	1.68	1.32	1.06
19/09/09 to 17/09/10	0.77	0.82	0.92	0.95	1.01	0.94	0.87	0.84	0.87	0.78	0.83	0.62	0.55
Min Standard	1.30	1.30	1.30	1.30	1.30	1.30	1.30	1.30	1.30	1.30	1.30	1.30	1.30

Excess Waiting Time figures are based on 12 weeks data

**Kilometre Performance**

**% Kilometres Operated**



Date Range / Period	7	8	9	10	11	12	13	1	2	3	4	5	6
18/09/10 to 16/09/11	95.97	96.03	91.78	94.18	96.59	95.05	96.37	96.63	95.00	95.11	90.99	98.85	97.51
19/09/09 to 17/09/10	94.88	94.73	93.09	93.02	95.63	96.59	96.74	97.37	97.62	98.22	97.73	99.40	97.27
Min Standard	98.00	98.00	98.00	98.00	98.00	98.00	98.00	98.00	98.00	98.00	98.00	98.00	98.00

Kilometre figures are based on 4 weeks data