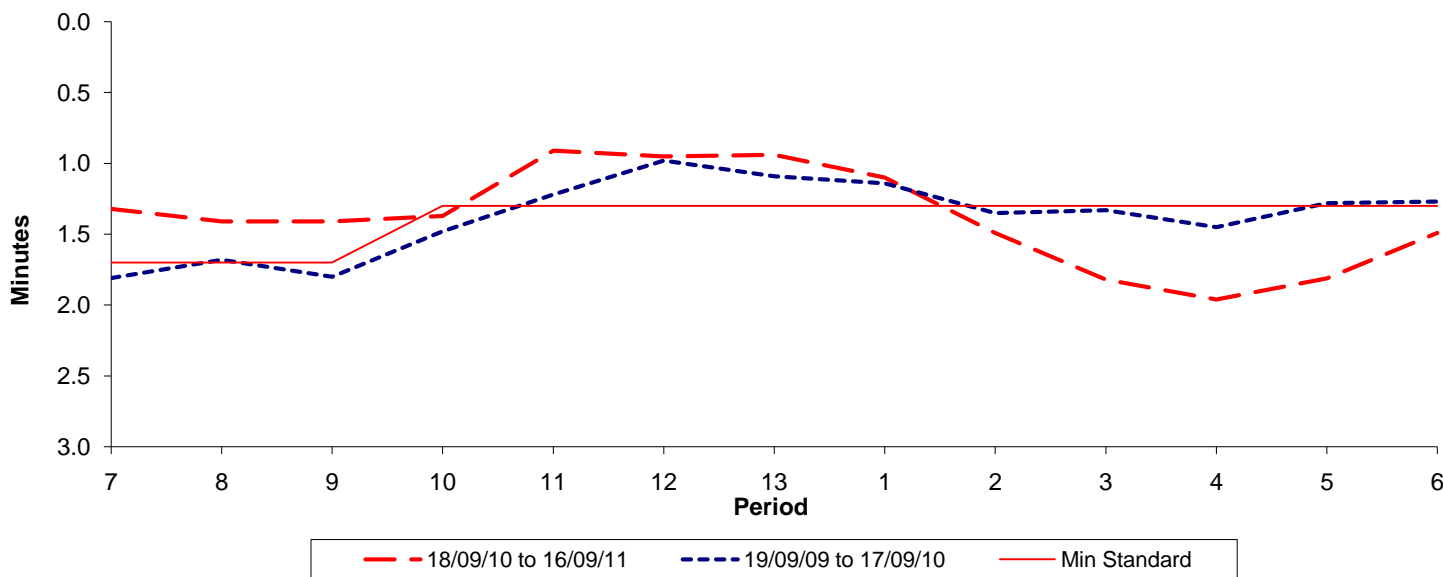




Reliability Performance (High Frequency)

Excess Waiting Time (minutes)

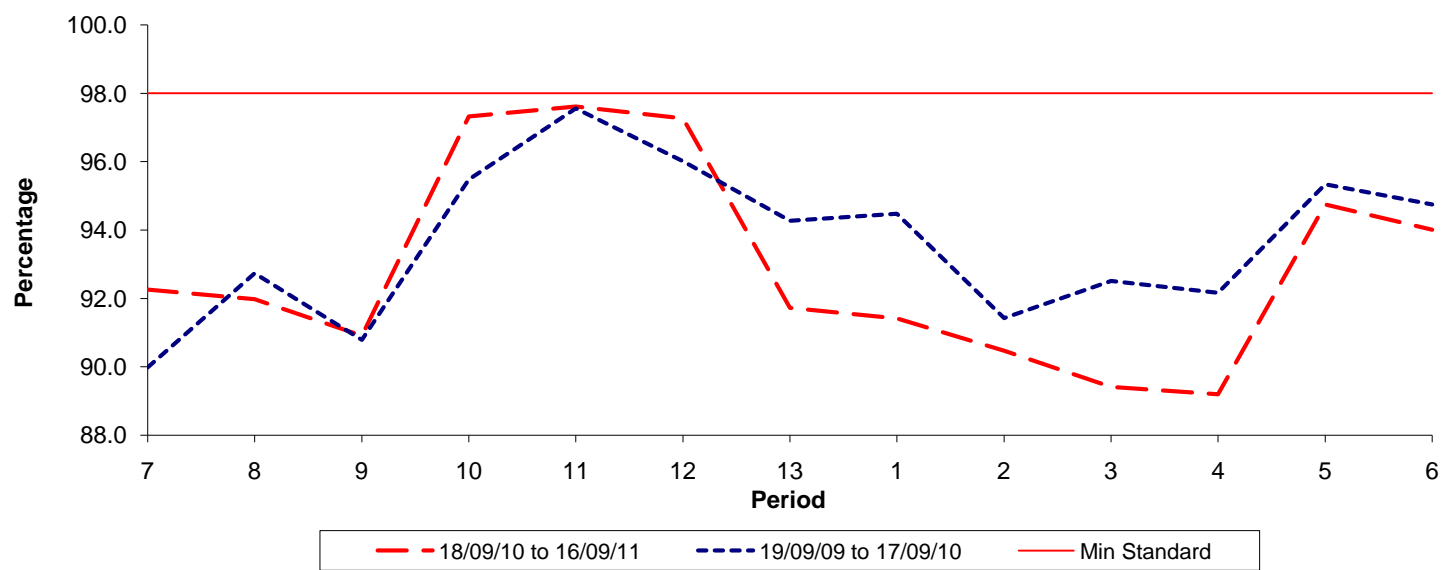


Date Range / Period	7	8	9	10	11	12	13	1	2	3	4	5	6
18/09/10 to 16/09/11	1.32	1.41	1.41	1.37	0.91	0.95	0.94	1.10	1.49	1.82	1.96	1.81	1.49
19/09/09 to 17/09/10	1.81	1.68	1.80	1.48	1.22	0.98	1.09	1.14	1.35	1.33	1.45	1.28	1.27
Min Standard	1.70	1.70	1.70	1.30	1.30	1.30	1.30	1.30	1.30	1.30	1.30	1.30	1.30

Excess Waiting Time figures are based on 12 weeks data

Kilometre Performance

% Kilometres Operated



Date Range / Period	7	8	9	10	11	12	13	1	2	3	4	5	6
18/09/10 to 16/09/11	92.26	91.97	90.90	97.32	97.61	97.26	91.72	91.41	90.46	89.41	89.19	94.74	94.00
19/09/09 to 17/09/10	89.98	92.73	90.78	95.48	97.56	96.01	94.27	94.47	91.42	92.51	92.16	95.34	94.74
Min Standard	98.00	98.00	98.00	98.00	98.00	98.00	98.00	98.00	98.00	98.00	98.00	98.00	98.00

Kilometre figures are based on 4 weeks data