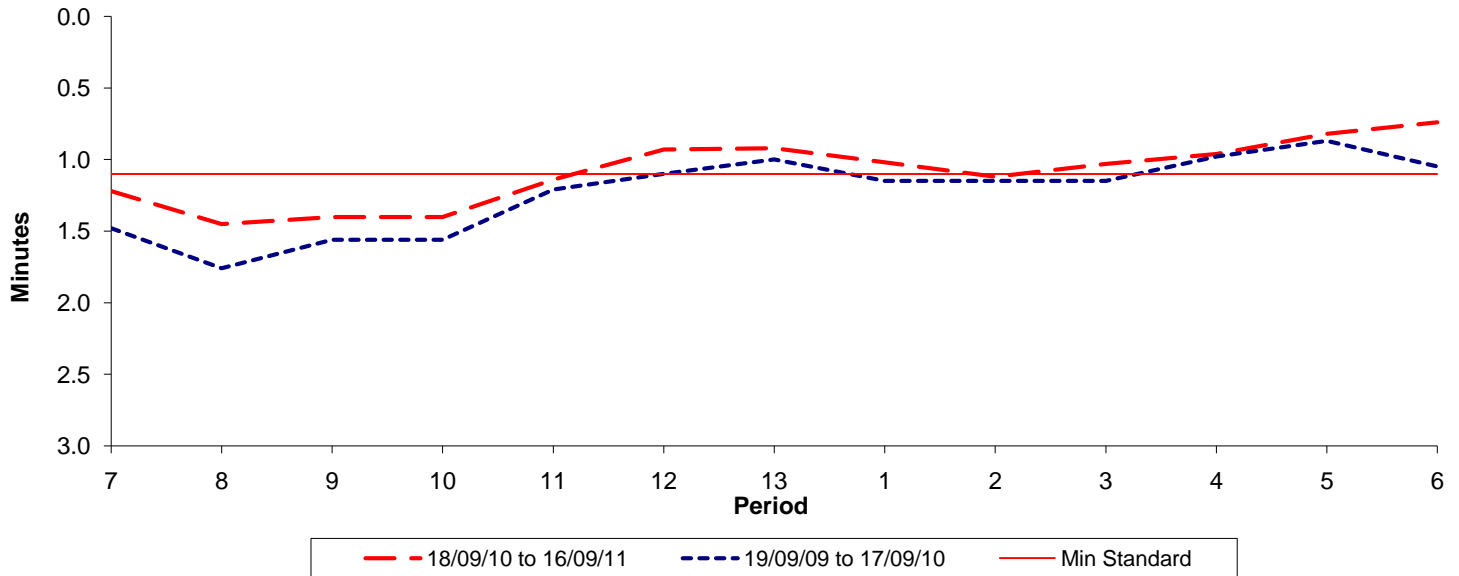




Reliability Performance (High Frequency)

Excess Waiting Time (minutes)

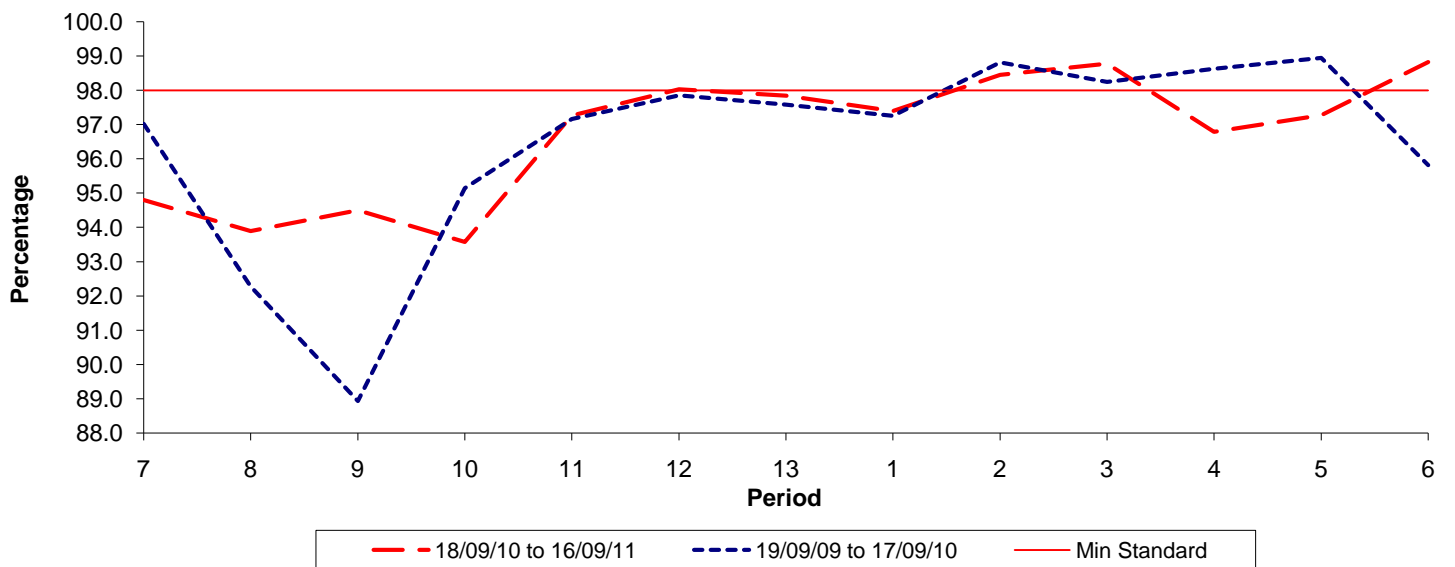


Date Range / Period	7	8	9	10	11	12	13	1	2	3	4	5	6
18/09/10 to 16/09/11	1.22	1.45	1.40	1.40	1.14	0.93	0.92	1.02	1.12	1.03	0.96	0.82	0.74
19/09/09 to 17/09/10	1.48	1.76	1.56	1.56	1.21	1.10	1.00	1.15	1.15	1.15	0.98	0.87	1.05
Min Standard	1.10	1.10	1.10	1.10	1.10	1.10	1.10	1.10	1.10	1.10	1.10	1.10	1.10

Excess Waiting Time figures are based on 12 weeks data

Kilometre Performance

% Kilometres Operated



Date Range / Period	7	8	9	10	11	12	13	1	2	3	4	5	6
18/09/10 to 16/09/11	94.80	93.90	94.50	93.58	97.26	98.03	97.84	97.39	98.45	98.77	96.79	97.27	98.82
19/09/09 to 17/09/10	97.02	92.27	89.93	95.14	97.16	97.85	97.58	97.25	98.81	98.24	98.62	98.94	95.81
Min Standard	98.00	98.00	98.00	98.00	98.00	98.00	98.00	98.00	98.00	98.00	98.00	98.00	98.00

Kilometre figures are based on 4 weeks data