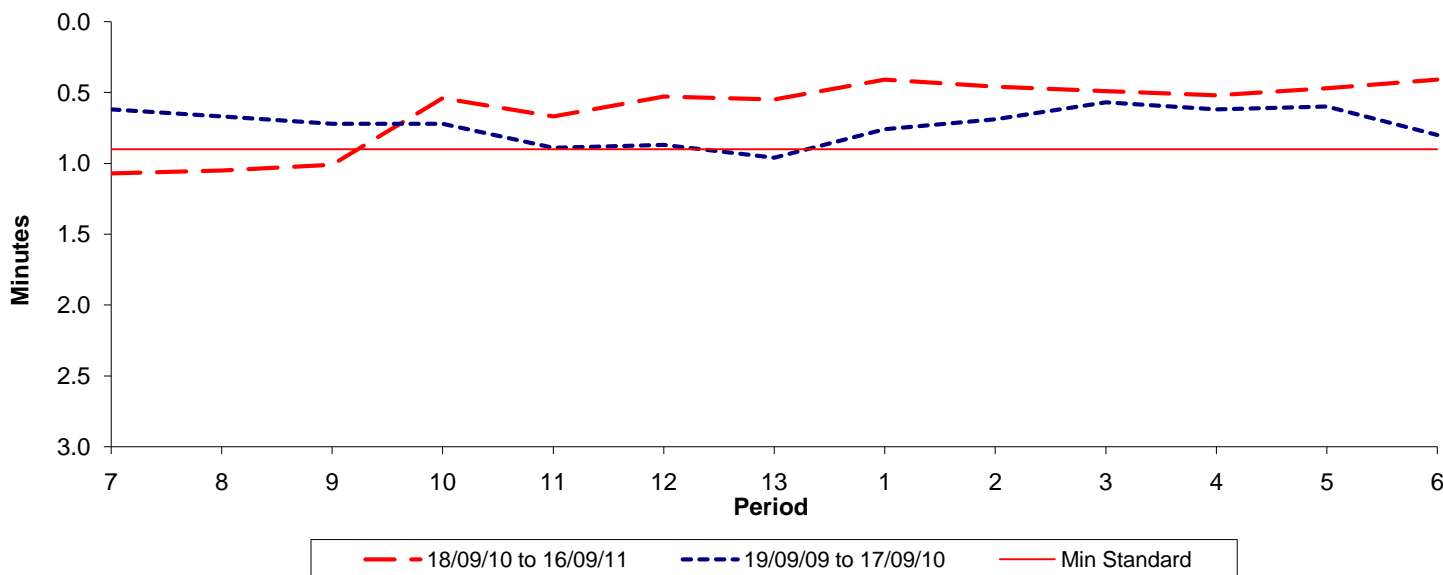




Reliability Performance (High Frequency)

Excess Waiting Time (minutes)

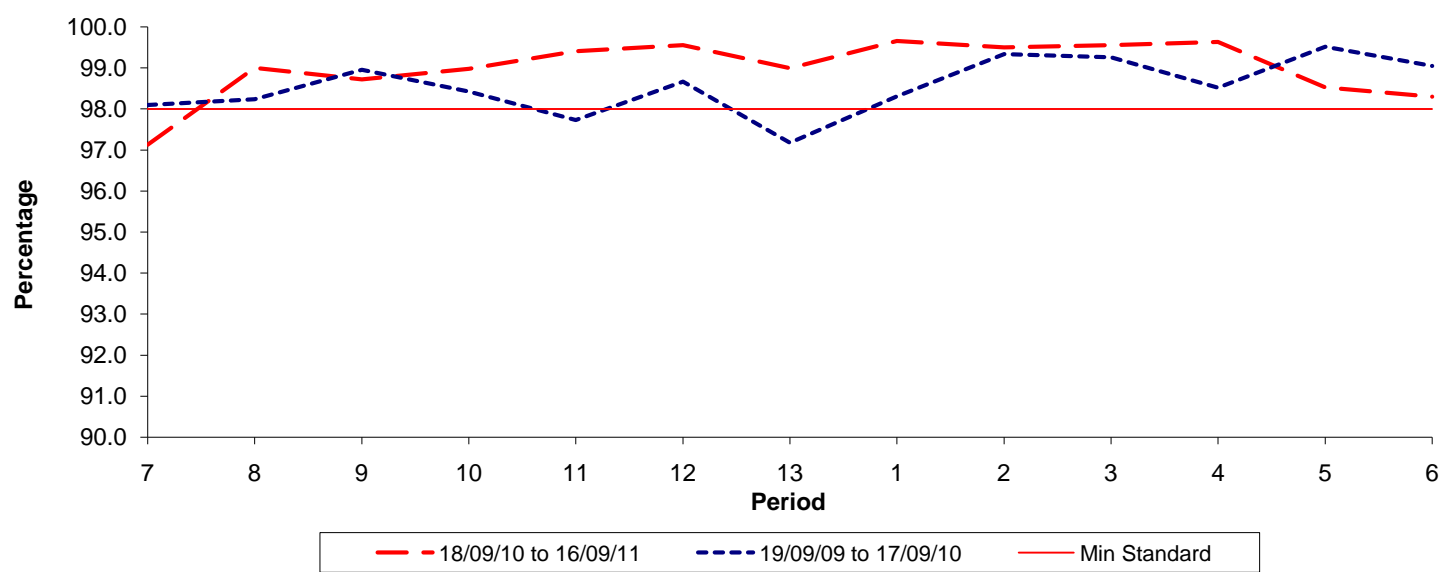


| Date Range / Period | 7 | 8 | 9 | 10 | 11 | 12 | 13 | 1 | 2 | 3 | 4 | 5 | 6 |
|----------------------|------|------|------|------|------|------|------|------|------|------|------|------|------|
| 18/09/10 to 16/09/11 | 1.07 | 1.05 | 1.01 | 0.54 | 0.67 | 0.53 | 0.55 | 0.41 | 0.46 | 0.49 | 0.52 | 0.47 | 0.41 |
| 19/09/09 to 17/09/10 | 0.62 | 0.67 | 0.72 | 0.72 | 0.89 | 0.87 | 0.96 | 0.76 | 0.69 | 0.57 | 0.62 | 0.60 | 0.80 |
| Min Standard | 0.90 | 0.90 | 0.90 | 0.90 | 0.90 | 0.90 | 0.90 | 0.90 | 0.90 | 0.90 | 0.90 | 0.90 | 0.90 |

Excess Waiting Time figures are based on 12 weeks data

Kilometre Performance

% Kilometres Operated



| Date Range / Period | 7 | 8 | 9 | 10 | 11 | 12 | 13 | 1 | 2 | 3 | 4 | 5 | 6 |
|----------------------|-------|-------|-------|-------|-------|-------|-------|-------|-------|-------|-------|-------|-------|
| 18/09/10 to 16/09/11 | 97.13 | 99.00 | 98.72 | 98.98 | 99.41 | 99.55 | 99.00 | 99.66 | 99.50 | 99.56 | 99.64 | 98.53 | 98.30 |
| 19/09/09 to 17/09/10 | 98.10 | 98.24 | 98.96 | 98.43 | 97.73 | 98.67 | 97.18 | 98.31 | 99.34 | 99.26 | 98.52 | 99.52 | 99.05 |
| Min Standard | 98.00 | 98.00 | 98.00 | 98.00 | 98.00 | 98.00 | 98.00 | 98.00 | 98.00 | 98.00 | 98.00 | 98.00 | 98.00 |

Kilometre figures are based on 4 weeks data