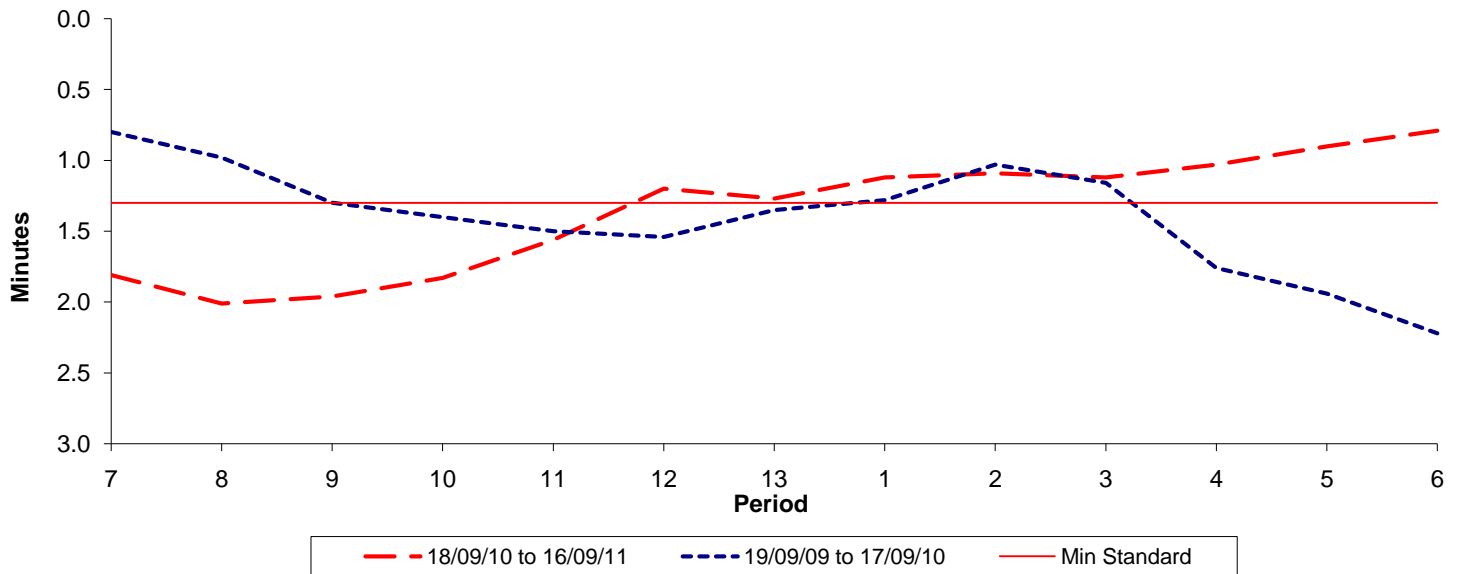




Reliability Performance (High Frequency)

Excess Waiting Time (minutes)

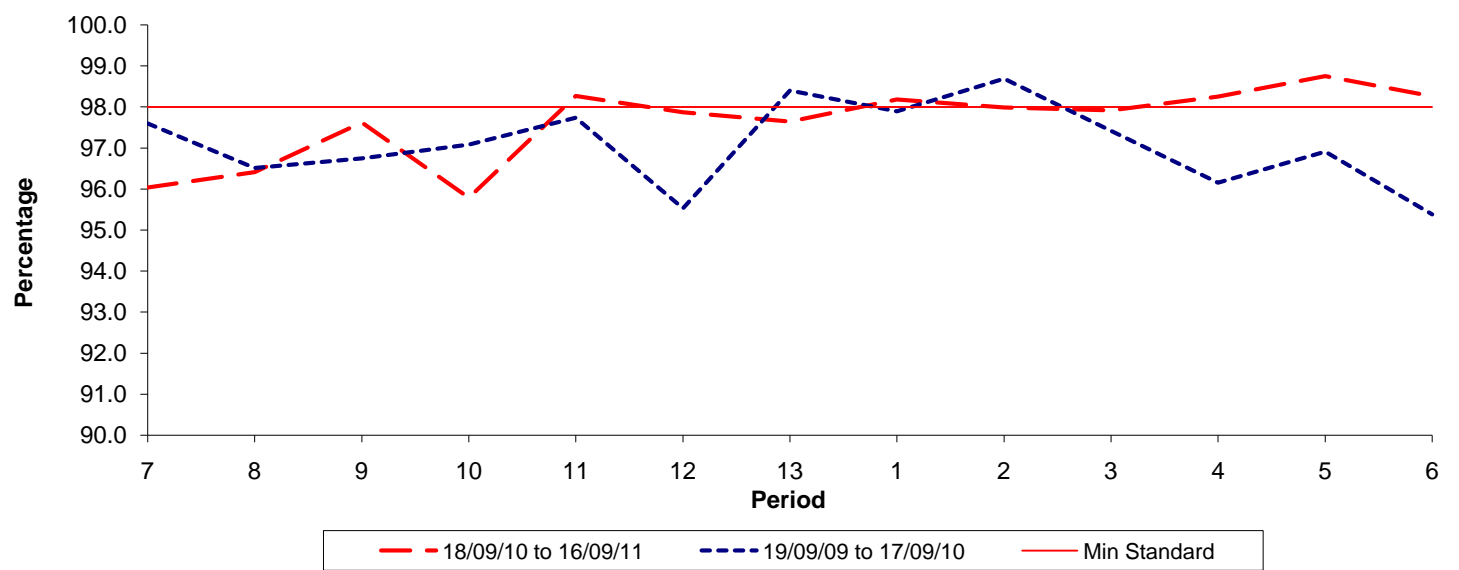


Date Range / Period	7	8	9	10	11	12	13	1	2	3	4	5	6
18/09/10 to 16/09/11	1.81	2.01	1.96	1.83	1.56	1.20	1.27	1.12	1.09	1.12	1.03	0.90	0.79
19/09/09 to 17/09/10	0.80	0.98	1.30	1.40	1.50	1.54	1.35	1.28	1.03	1.16	1.76	1.94	2.22
Min Standard	1.30	1.30	1.30	1.30	1.30	1.30	1.30	1.30	1.30	1.30	1.30	1.30	1.30

Excess Waiting Time figures are based on 12 weeks data

Kilometre Performance

% Kilometres Operated



Date Range / Period	7	8	9	10	11	12	13	1	2	3	4	5	6
18/09/10 to 16/09/11	96.03	96.41	97.62	95.79	98.27	97.87	97.64	98.18	97.99	97.92	98.25	98.75	98.26
19/09/09 to 17/09/10	97.60	96.51	96.75	97.08	97.74	95.53	98.40	97.89	98.69	97.42	96.15	96.91	95.38
Min Standard	98.00	98.00	98.00	98.00	98.00	98.00	98.00	98.00	98.00	98.00	98.00	98.00	98.00

Kilometre figures are based on 4 weeks data