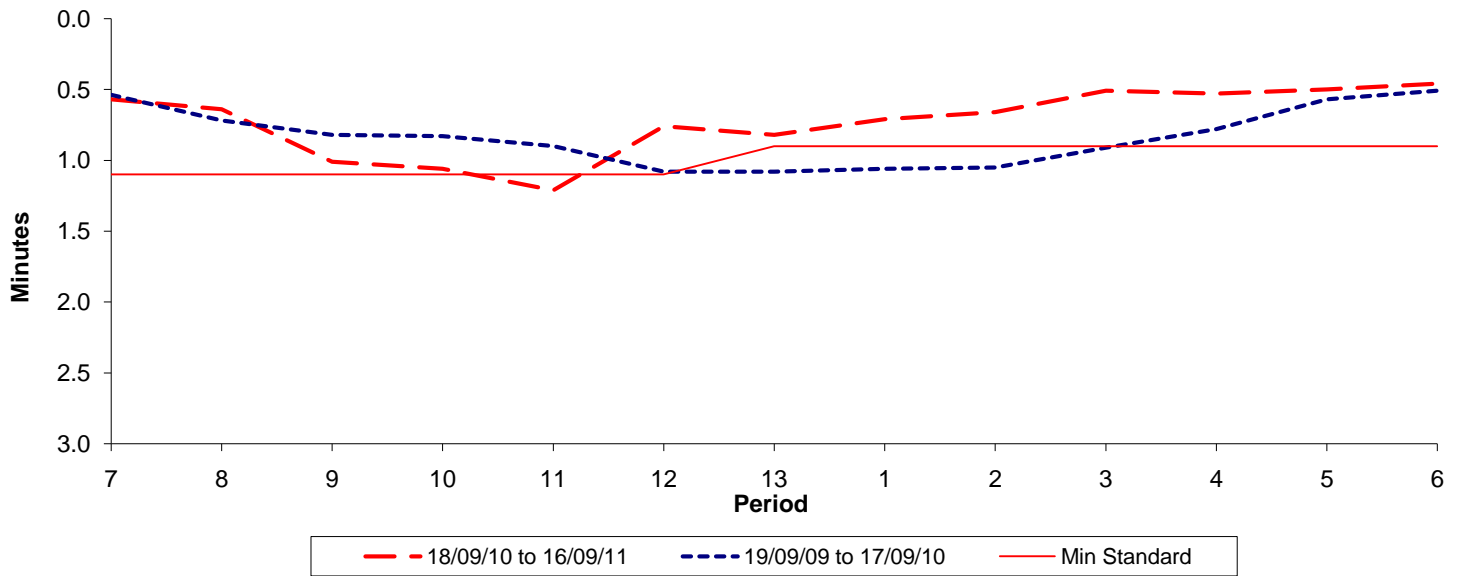




Reliability Performance (High Frequency)

Excess Waiting Time (minutes)

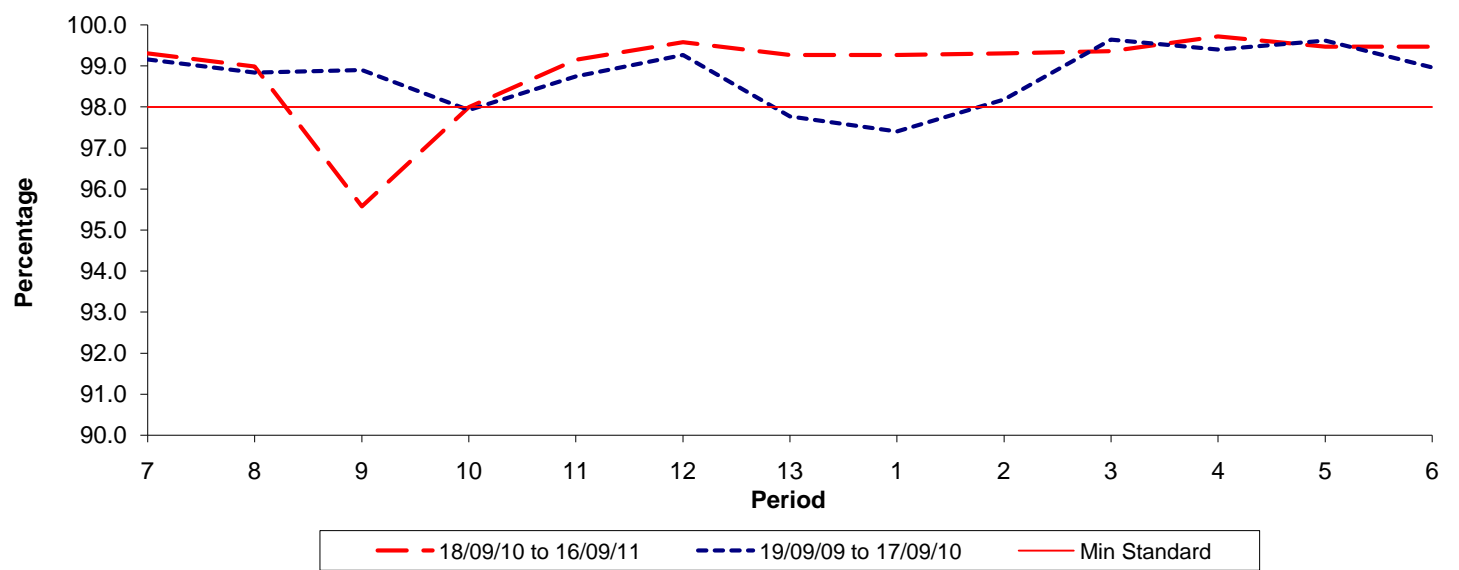


Date Range / Period	7	8	9	10	11	12	13	1	2	3	4	5	6
18/09/10 to 16/09/11	0.57	0.64	1.01	1.06	1.21	0.76	0.82	0.71	0.66	0.51	0.53	0.50	0.46
19/09/09 to 17/09/10	0.54	0.72	0.82	0.83	0.90	1.08	1.08	1.06	1.05	0.91	0.78	0.57	0.51
Min Standard	1.10	1.10	1.10	1.10	1.10	1.10	0.90	0.90	0.90	0.90	0.90	0.90	0.90

Excess Waiting Time figures are based on 12 weeks data

Kilometre Performance

% Kilometres Operated



Date Range / Period	7	8	9	10	11	12	13	1	2	3	4	5	6
18/09/10 to 16/09/11	99.30	98.98	95.58	98.00	99.15	99.58	99.27	99.27	99.31	99.36	99.72	99.47	99.47
19/09/09 to 17/09/10	99.16	98.84	98.90	97.93	98.74	99.27	97.77	97.40	98.18	99.64	99.40	99.61	98.96
Min Standard	98.00	98.00	98.00	98.00	98.00	98.00	98.00	98.00	98.00	98.00	98.00	98.00	98.00

Kilometre figures are based on 4 weeks data