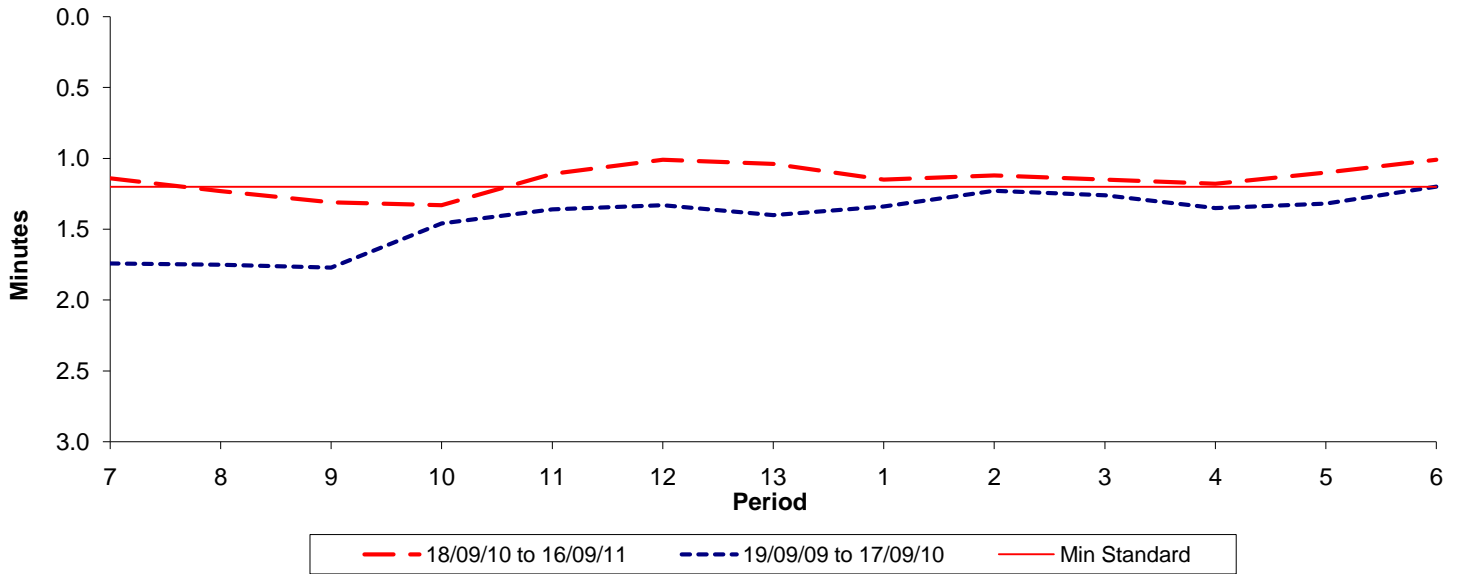




Reliability Performance (High Frequency)

Excess Waiting Time (minutes)

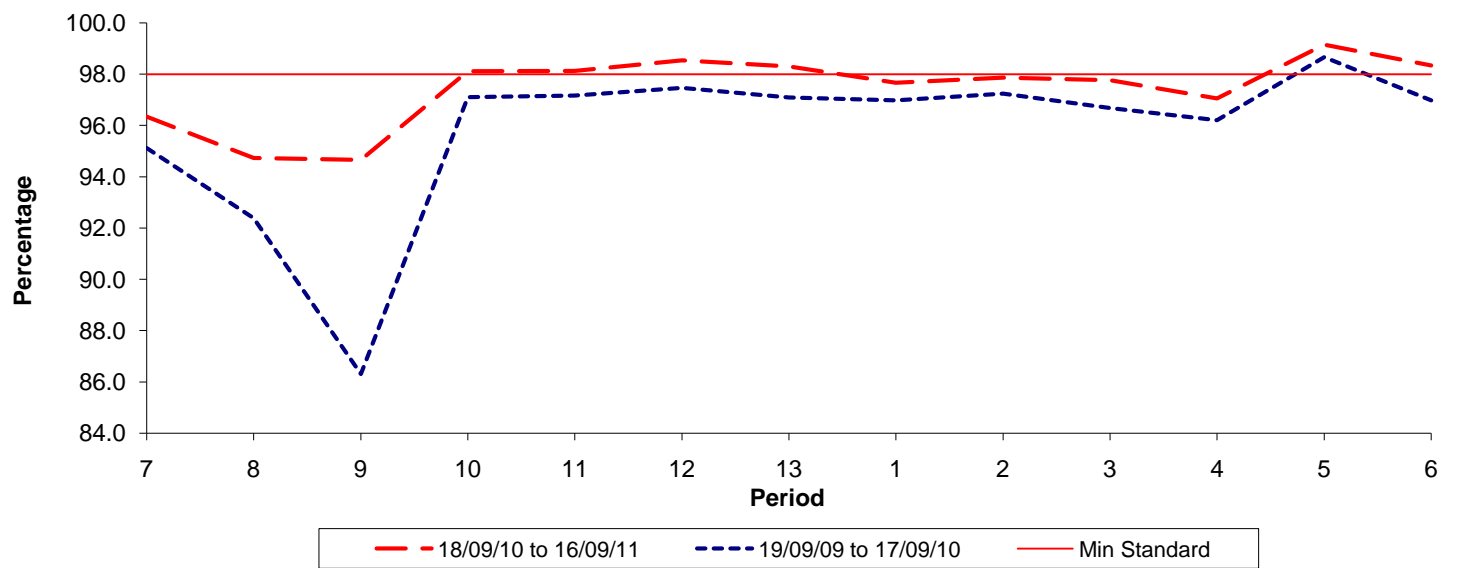


Date Range / Period	7	8	9	10	11	12	13	1	2	3	4	5	6
18/09/10 to 16/09/11	1.14	1.23	1.31	1.33	1.11	1.01	1.04	1.15	1.12	1.15	1.18	1.10	1.01
19/09/09 to 17/09/10	1.74	1.75	1.77	1.46	1.36	1.33	1.40	1.34	1.23	1.26	1.35	1.32	1.20
Min Standard	1.20	1.20	1.20	1.20	1.20	1.20	1.20	1.20	1.20	1.20	1.20	1.20	1.20

Excess Waiting Time figures are based on 12 weeks data

Kilometre Performance

% Kilometres Operated



Date Range / Period	7	8	9	10	11	12	13	1	2	3	4	5	6
18/09/10 to 16/09/11	96.34	94.74	94.66	98.12	98.13	98.54	98.30	97.67	97.86	97.76	97.05	99.15	98.34
19/09/09 to 17/09/10	95.13	92.39	86.31	97.11	97.17	97.47	97.10	96.98	97.25	96.69	96.21	98.67	96.98
Min Standard	98.00	98.00	98.00	98.00	98.00	98.00	98.00	98.00	98.00	98.00	98.00	98.00	98.00

Kilometre figures are based on 4 weeks data