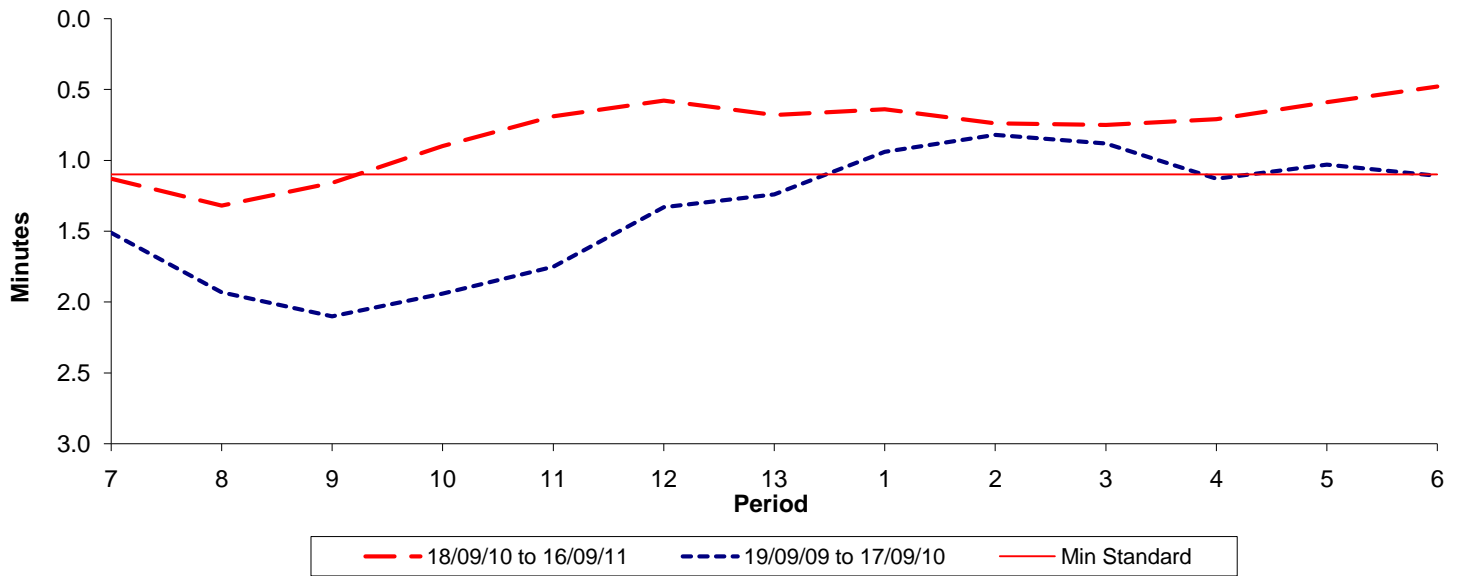




**Reliability Performance ( High Frequency )**

**Excess Waiting Time (minutes)**

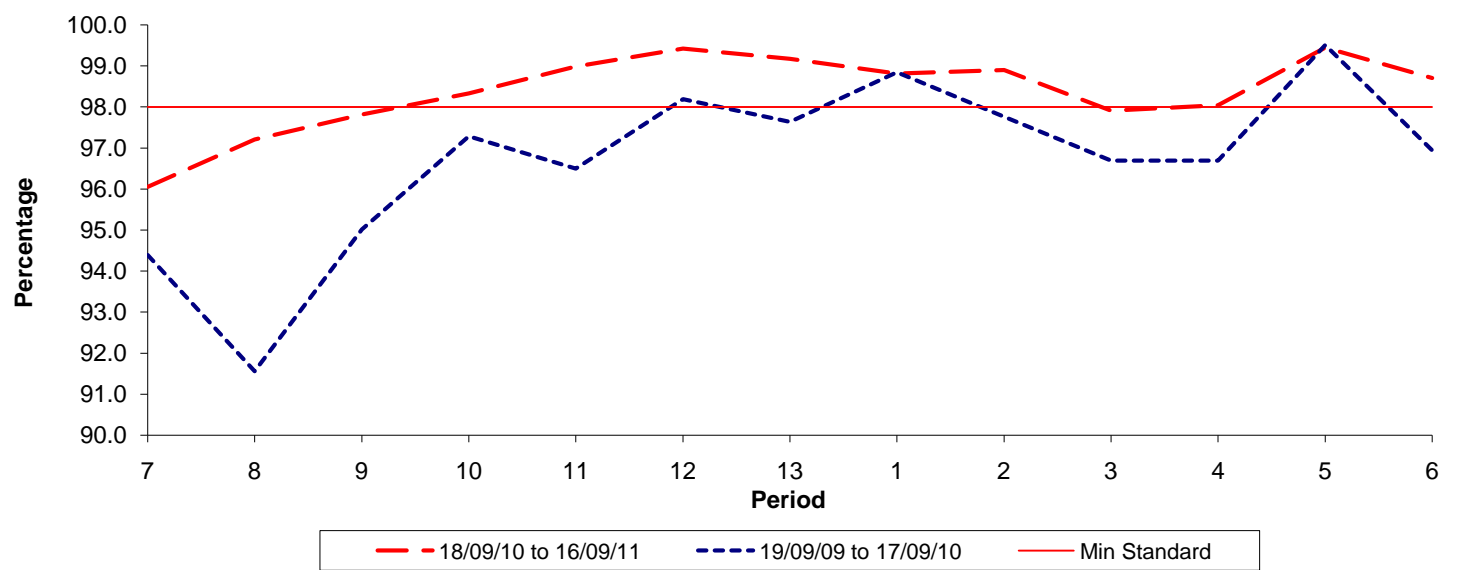


Date Range / Period	7	8	9	10	11	12	13	1	2	3	4	5	6
18/09/10 to 16/09/11	1.13	1.32	1.16	0.90	0.69	0.58	0.68	0.64	0.74	0.75	0.71	0.59	0.48
19/09/09 to 17/09/10	1.51	1.93	2.10	1.94	1.75	1.33	1.24	0.94	0.82	0.88	1.13	1.03	1.11
Min Standard	1.10	1.10	1.10	1.10	1.10	1.10	1.10	1.10	1.10	1.10	1.10	1.10	1.10

Excess Waiting Time figures are based on 12 weeks data

**Kilometre Performance**

**% Kilometres Operated**



Date Range / Period	7	8	9	10	11	12	13	1	2	3	4	5	6
18/09/10 to 16/09/11	96.05	97.21	97.82	98.33	98.99	99.43	99.18	98.82	98.90	97.91	98.04	99.45	98.71
19/09/09 to 17/09/10	94.39	91.56	95.02	97.29	96.50	98.19	97.64	98.85	97.76	96.69	96.69	99.51	96.94
Min Standard	98.00	98.00	98.00	98.00	98.00	98.00	98.00	98.00	98.00	98.00	98.00	98.00	98.00

Kilometre figures are based on 4 weeks data