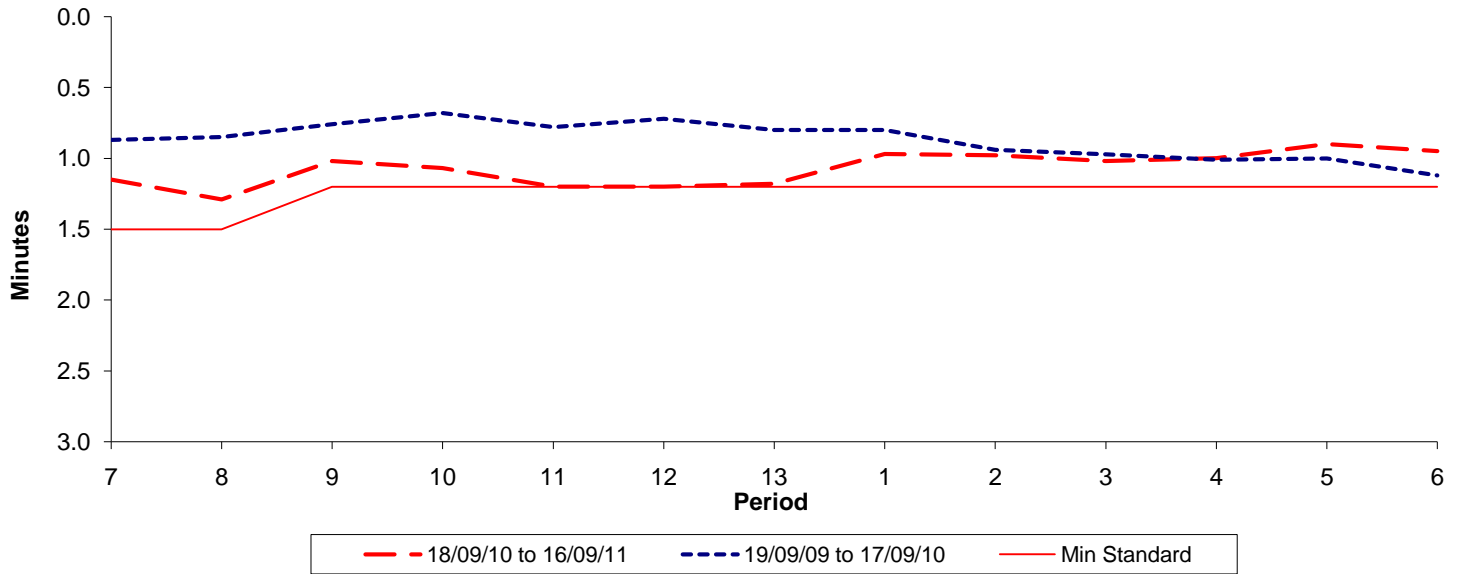




Reliability Performance (High Frequency)

Excess Waiting Time (minutes)

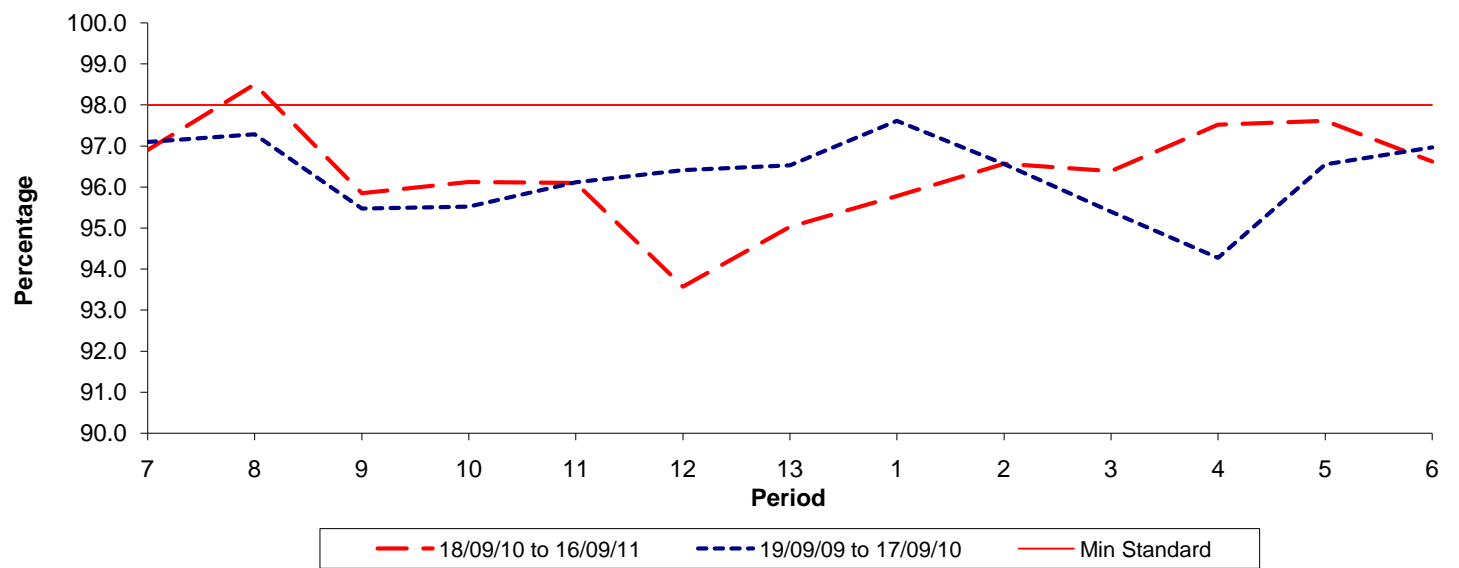


Date Range / Period	7	8	9	10	11	12	13	1	2	3	4	5	6
18/09/10 to 16/09/11	1.15	1.29	1.02	1.07	1.20	1.20	1.18	0.97	0.98	1.02	1.00	0.90	0.95
19/09/09 to 17/09/10	0.87	0.85	0.76	0.68	0.78	0.72	0.80	0.80	0.94	0.97	1.01	1.00	1.12
Min Standard	1.50	1.50	1.20	1.20	1.20	1.20	1.20	1.20	1.20	1.20	1.20	1.20	1.20

Excess Waiting Time figures are based on 12 weeks data

Kilometre Performance

% Kilometres Operated



Date Range / Period	7	8	9	10	11	12	13	1	2	3	4	5	6
18/09/10 to 16/09/11	96.90	98.50	95.85	96.12	96.10	93.57	95.03	95.78	96.57	96.39	97.52	97.61	96.62
19/09/09 to 17/09/10	97.10	97.29	95.48	95.52	96.12	96.41	96.53	97.62	96.56	95.39	94.27	96.55	96.96
Min Standard	98.00	98.00	98.00	98.00	98.00	98.00	98.00	98.00	98.00	98.00	98.00	98.00	98.00

Kilometre figures are based on 4 weeks data