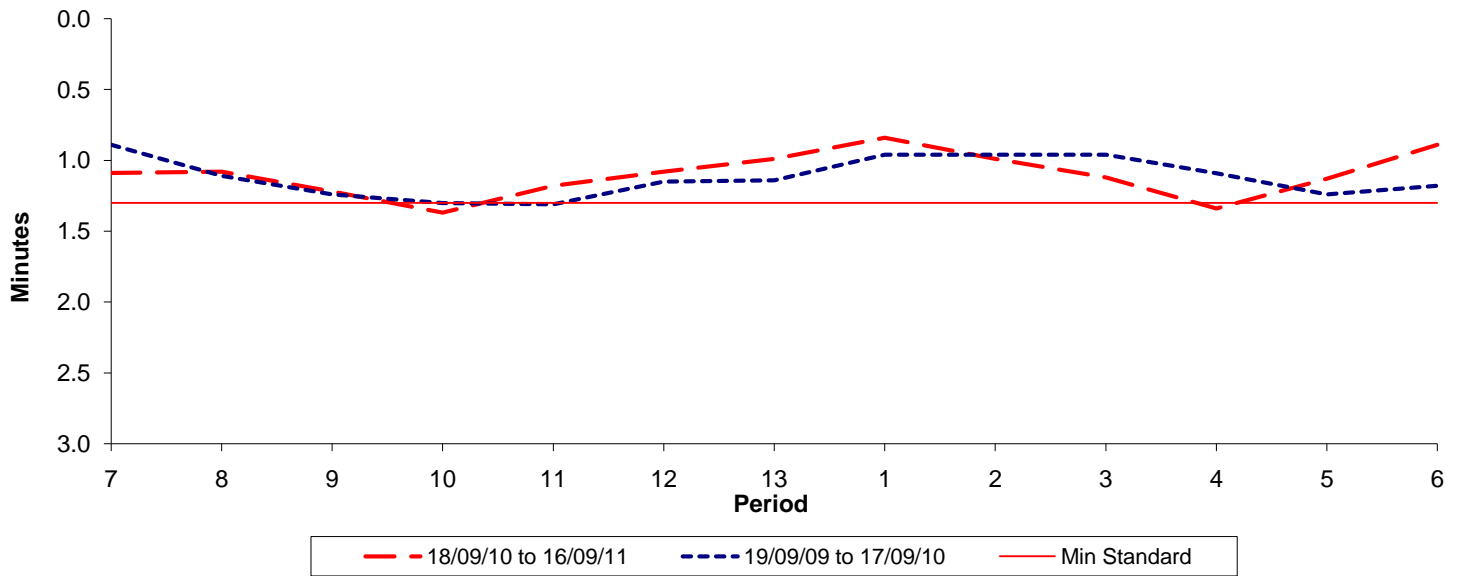




Reliability Performance (High Frequency)

Excess Waiting Time (minutes)

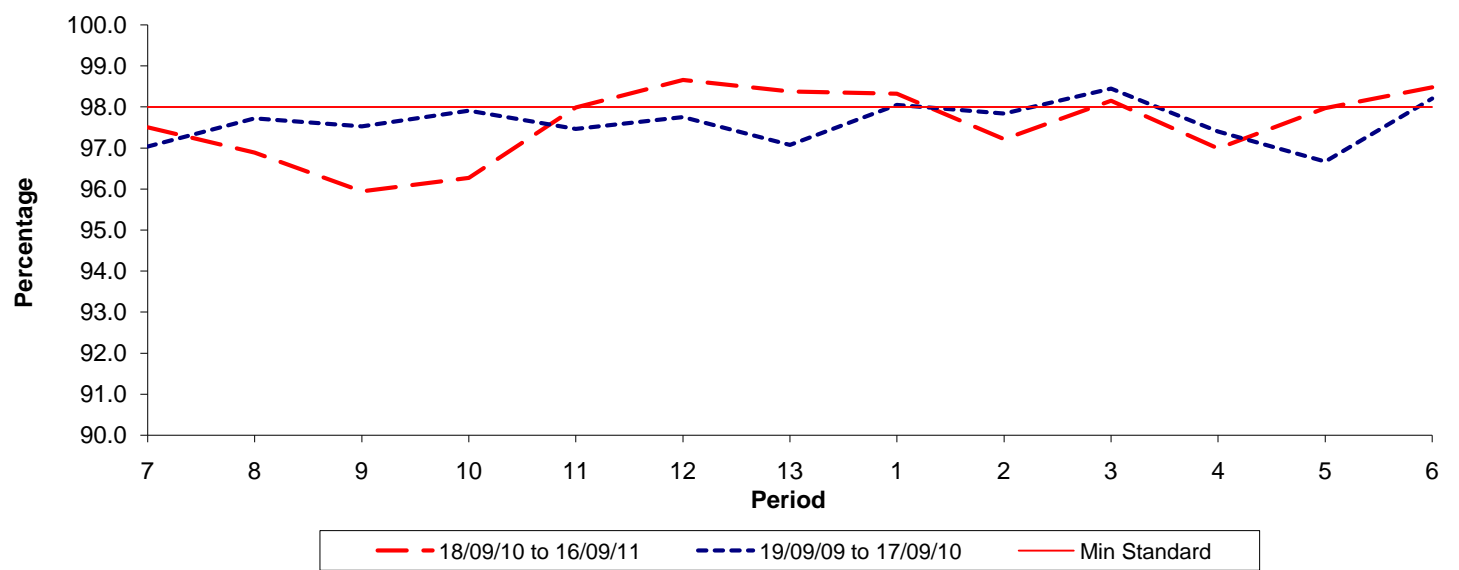


Date Range / Period	7	8	9	10	11	12	13	1	2	3	4	5	6
18/09/10 to 16/09/11	1.09	1.08	1.22	1.37	1.18	1.08	0.99	0.84	0.99	1.12	1.34	1.13	0.89
19/09/09 to 17/09/10	0.89	1.11	1.24	1.30	1.31	1.15	1.14	0.96	0.96	0.96	1.09	1.24	1.18
Min Standard	1.30	1.30	1.30	1.30	1.30	1.30	1.30	1.30	1.30	1.30	1.30	1.30	1.30

Excess Waiting Time figures are based on 12 weeks data

Kilometre Performance

% Kilometres Operated



Date Range / Period	7	8	9	10	11	12	13	1	2	3	4	5	6
18/09/10 to 16/09/11	97.50	96.88	95.94	96.27	97.99	98.66	98.38	98.32	97.21	98.15	96.99	97.97	98.48
19/09/09 to 17/09/10	97.03	97.72	97.53	97.91	97.46	97.75	97.08	98.05	97.84	98.45	97.40	96.67	98.21
Min Standard	98.00	98.00	98.00	98.00	98.00	98.00	98.00	98.00	98.00	98.00	98.00	98.00	98.00

Kilometre figures are based on 4 weeks data