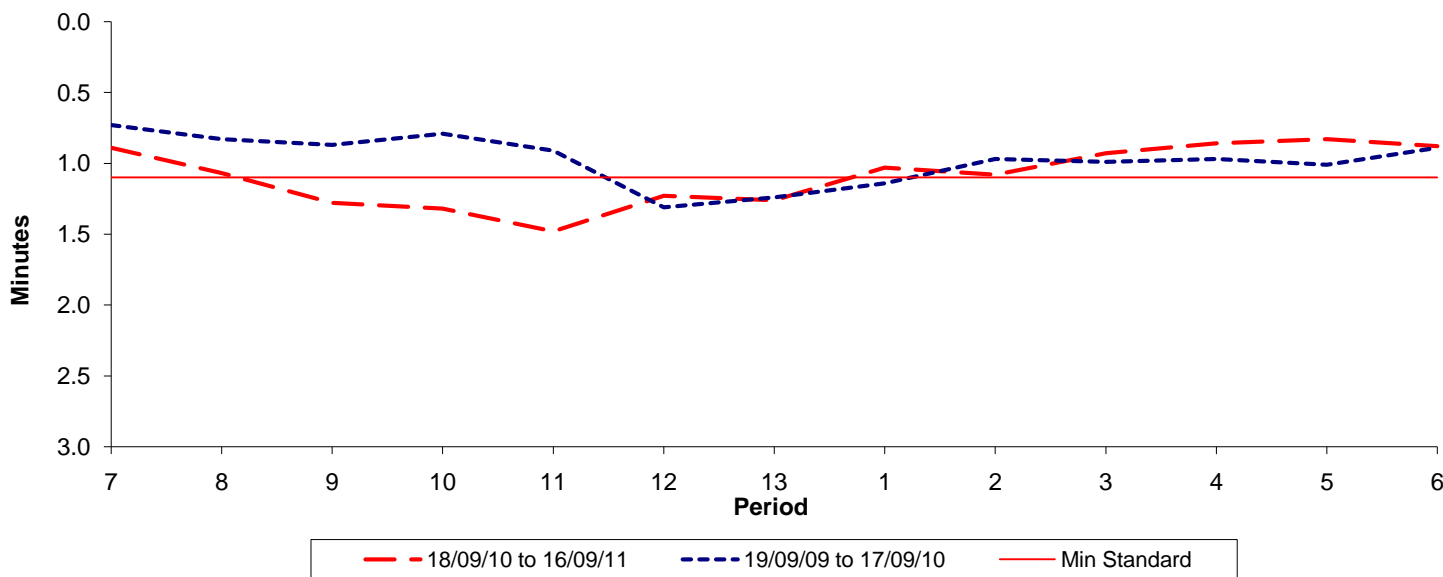




**Reliability Performance ( High Frequency )**

**Excess Waiting Time (minutes)**

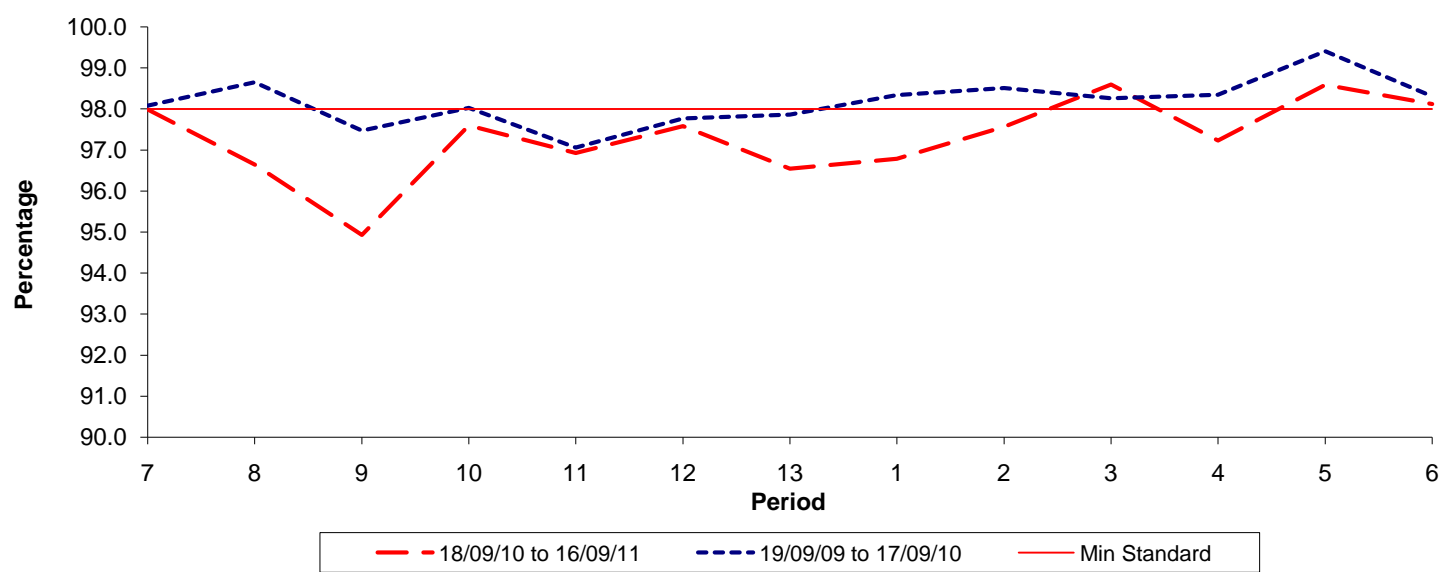


Date Range / Period	7	8	9	10	11	12	13	1	2	3	4	5	6
18/09/10 to 16/09/11	0.89	1.07	1.28	1.32	1.48	1.23	1.26	1.03	1.08	0.93	0.86	0.83	0.88
19/09/09 to 17/09/10	0.73	0.83	0.87	0.79	0.91	1.31	1.24	1.14	0.97	0.99	0.97	1.01	0.89
Min Standard	1.10	1.10	1.10	1.10	1.10	1.10	1.10	1.10	1.10	1.10	1.10	1.10	1.10

Excess Waiting Time figures are based on 12 weeks data

**Kilometre Performance**

**% Kilometres Operated**



Date Range / Period	7	8	9	10	11	12	13	1	2	3	4	5	6
18/09/10 to 16/09/11	97.99	96.64	94.93	97.60	96.93	97.59	96.55	96.79	97.57	98.60	97.23	98.59	98.12
19/09/09 to 17/09/10	98.08	98.65	97.47	98.02	97.06	97.77	97.86	98.34	98.51	98.26	98.34	99.41	98.31
Min Standard	98.00	98.00	98.00	98.00	98.00	98.00	98.00	98.00	98.00	98.00	98.00	98.00	98.00

Kilometre figures are based on 4 weeks data