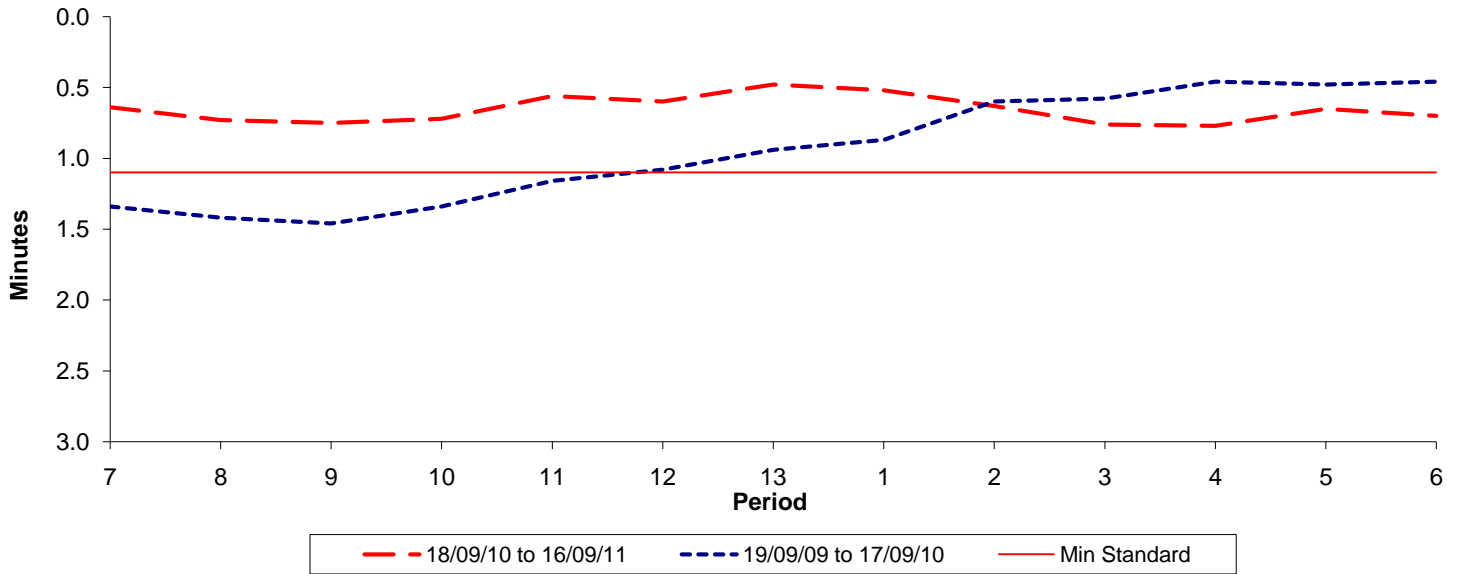




**Reliability Performance ( High Frequency )**

**Excess Waiting Time (minutes)**

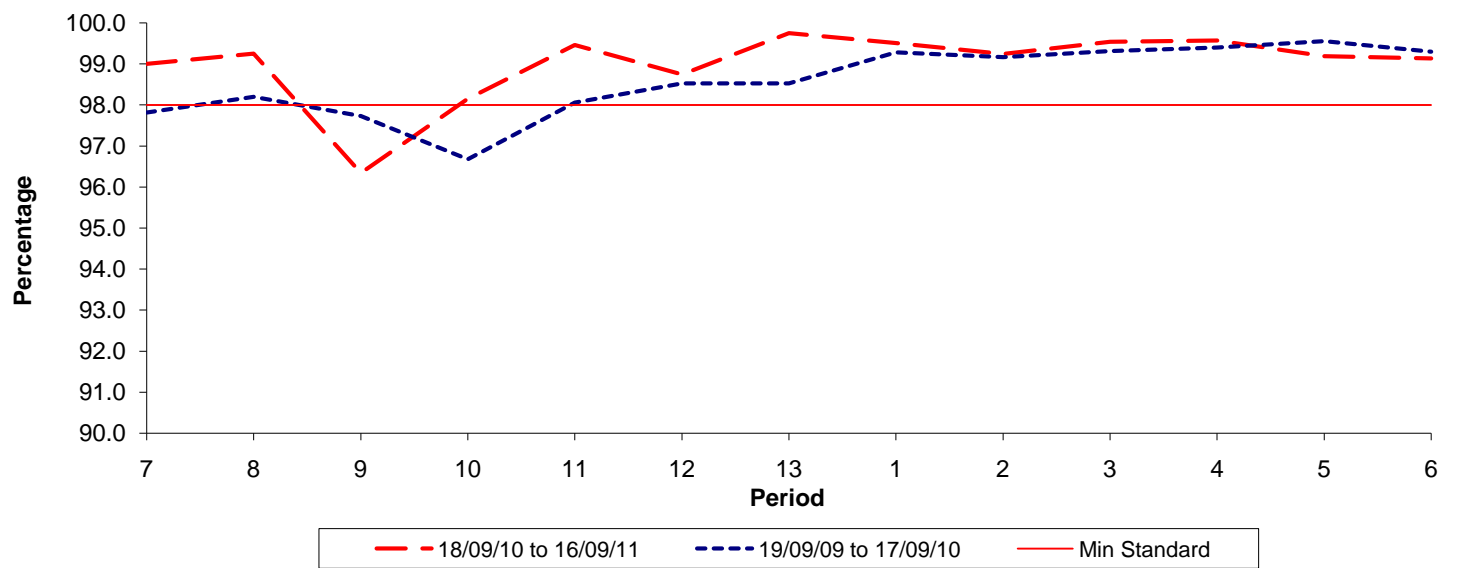


Date Range / Period	7	8	9	10	11	12	13	1	2	3	4	5	6
18/09/10 to 16/09/11	0.64	0.73	0.75	0.72	0.56	0.60	0.48	0.52	0.63	0.76	0.77	0.65	0.70
19/09/09 to 17/09/10	1.34	1.42	1.46	1.34	1.16	1.08	0.94	0.87	0.60	0.58	0.46	0.48	0.46
Min Standard	1.10	1.10	1.10	1.10	1.10	1.10	1.10	1.10	1.10	1.10	1.10	1.10	1.10

Excess Waiting Time figures are based on 12 weeks data

**Kilometre Performance**

**% Kilometres Operated**



Date Range / Period	7	8	9	10	11	12	13	1	2	3	4	5	6
18/09/10 to 16/09/11	99.00	99.25	96.34	98.15	99.46	98.74	99.75	99.51	99.24	99.54	99.57	99.19	99.13
19/09/09 to 17/09/10	97.82	98.20	97.73	96.68	98.06	98.53	98.53	99.29	99.17	99.32	99.41	99.56	99.30
Min Standard	98.00	98.00	98.00	98.00	98.00	98.00	98.00	98.00	98.00	98.00	98.00	98.00	98.00

Kilometre figures are based on 4 weeks data