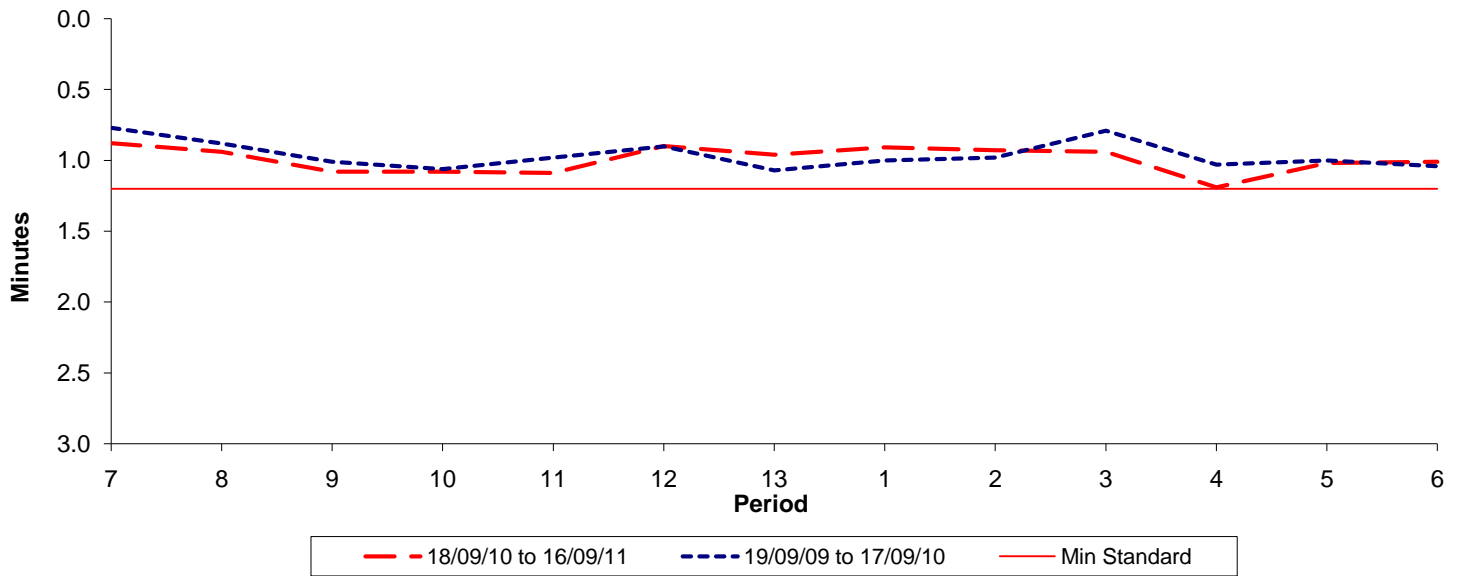




Reliability Performance (High Frequency)

Excess Waiting Time (minutes)

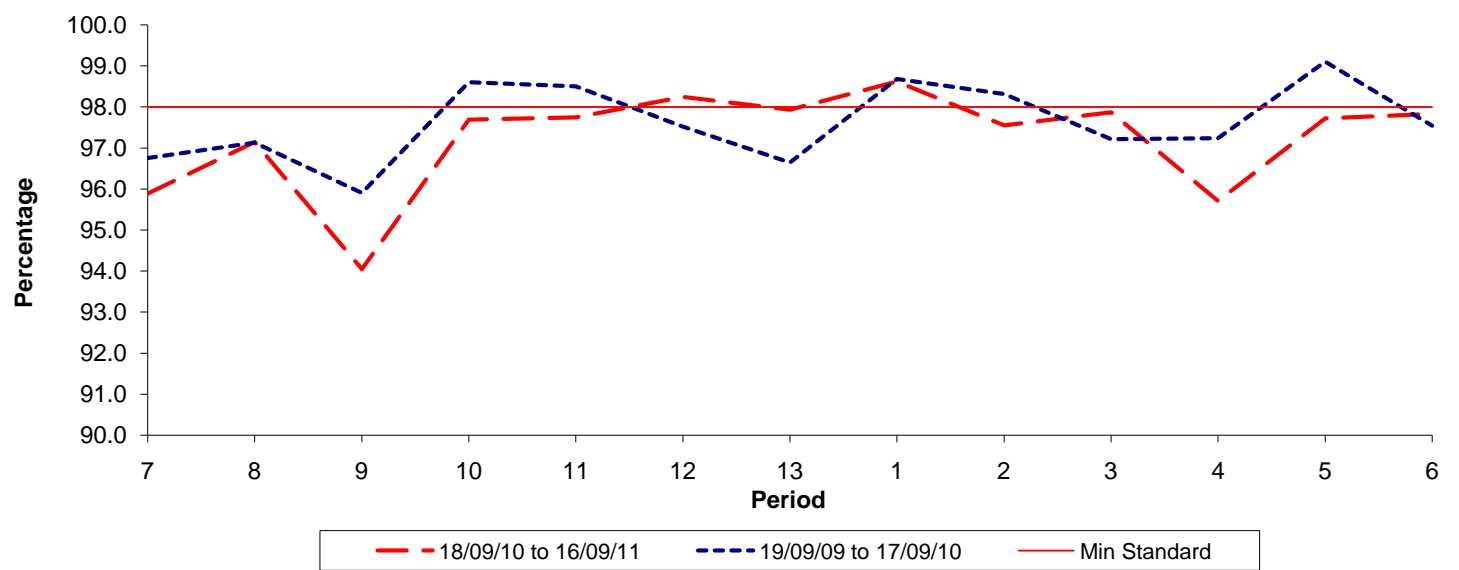


Date Range / Period	7	8	9	10	11	12	13	1	2	3	4	5	6
18/09/10 to 16/09/11	0.88	0.94	1.08	1.08	1.09	0.90	0.96	0.91	0.93	0.94	1.19	1.02	1.01
19/09/09 to 17/09/10	0.77	0.88	1.01	1.06	0.98	0.90	1.07	1.00	0.98	0.79	1.03	1.00	1.04
Min Standard	1.20	1.20	1.20	1.20	1.20	1.20	1.20	1.20	1.20	1.20	1.20	1.20	1.20

Excess Waiting Time figures are based on 12 weeks data

Kilometre Performance

% Kilometres Operated



Date Range / Period	7	8	9	10	11	12	13	1	2	3	4	5	6
18/09/10 to 16/09/11	95.89	97.15	94.05	97.69	97.75	98.25	97.93	98.62	97.55	97.87	95.71	97.72	97.83
19/09/09 to 17/09/10	96.75	97.13	95.90	98.60	98.50	97.52	96.65	98.68	98.31	97.22	97.23	99.10	97.54
Min Standard	98.00	98.00	98.00	98.00	98.00	98.00	98.00	98.00	98.00	98.00	98.00	98.00	98.00

Kilometre figures are based on 4 weeks data