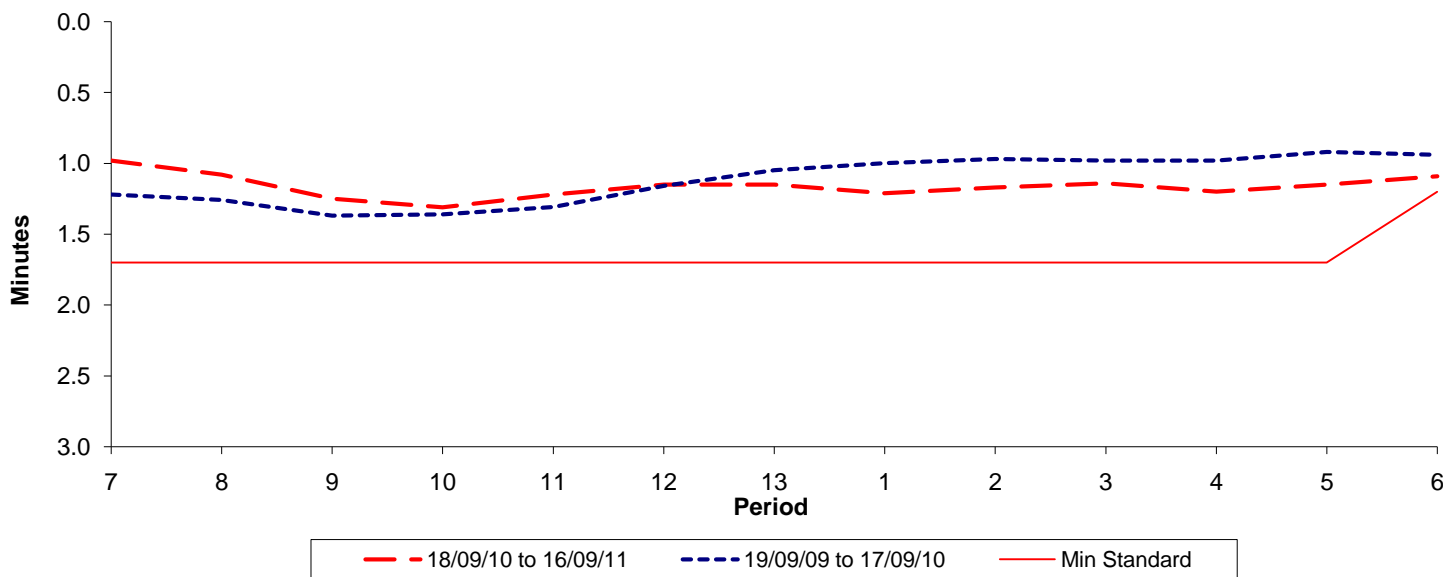




Reliability Performance (High Frequency)

Excess Waiting Time (minutes)

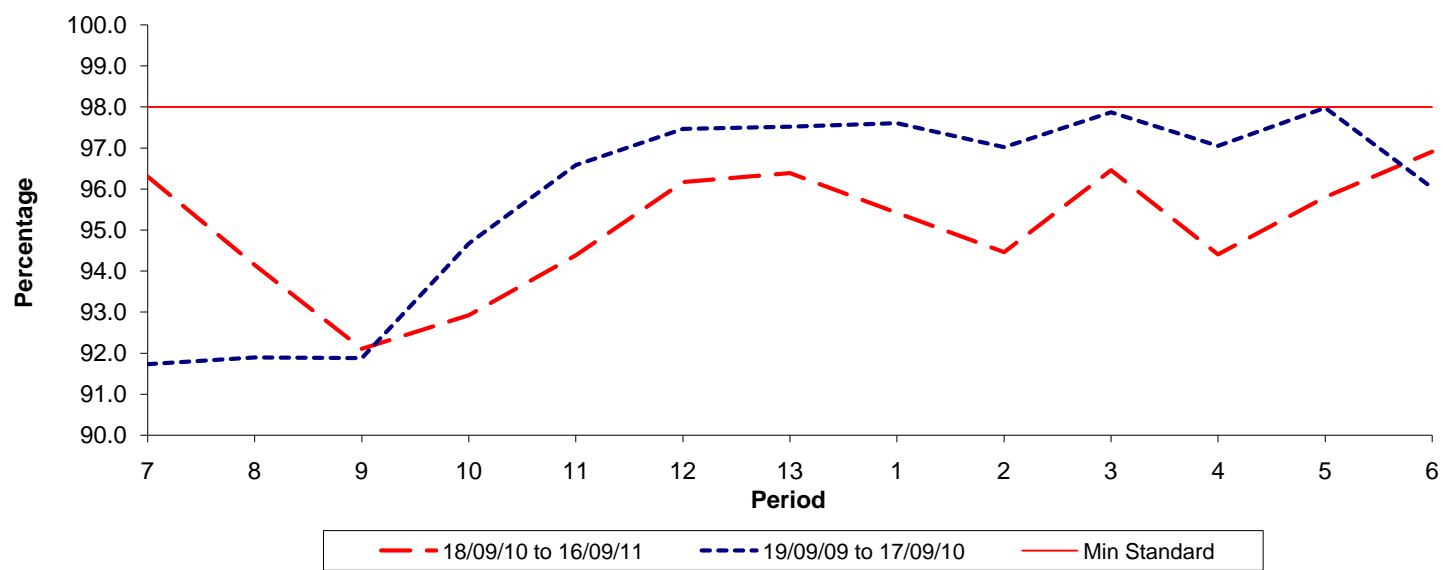


Date Range / Period	7	8	9	10	11	12	13	1	2	3	4	5	6
18/09/10 to 16/09/11	0.98	1.08	1.25	1.31	1.22	1.15	1.15	1.21	1.17	1.14	1.20	1.15	1.09
19/09/09 to 17/09/10	1.22	1.26	1.37	1.36	1.31	1.16	1.05	1.00	0.97	0.98	0.98	0.92	0.94
Min Standard	1.70	1.70	1.70	1.70	1.70	1.70	1.70	1.70	1.70	1.70	1.70	1.70	1.20

Excess Waiting Time figures are based on 12 weeks data

Kilometre Performance

% Kilometres Operated



Date Range / Period	7	8	9	10	11	12	13	1	2	3	4	5	6
18/09/10 to 16/09/11	96.30	94.15	92.10	92.92	94.38	96.17	96.39	95.42	94.46	96.46	94.40	95.80	96.91
19/09/09 to 17/09/10	91.73	91.89	91.87	94.67	96.59	97.47	97.52	97.60	97.02	97.87	97.05	97.98	96.03
Min Standard	98.00	98.00	98.00	98.00	98.00	98.00	98.00	98.00	98.00	98.00	98.00	98.00	98.00

Kilometre figures are based on 4 weeks data