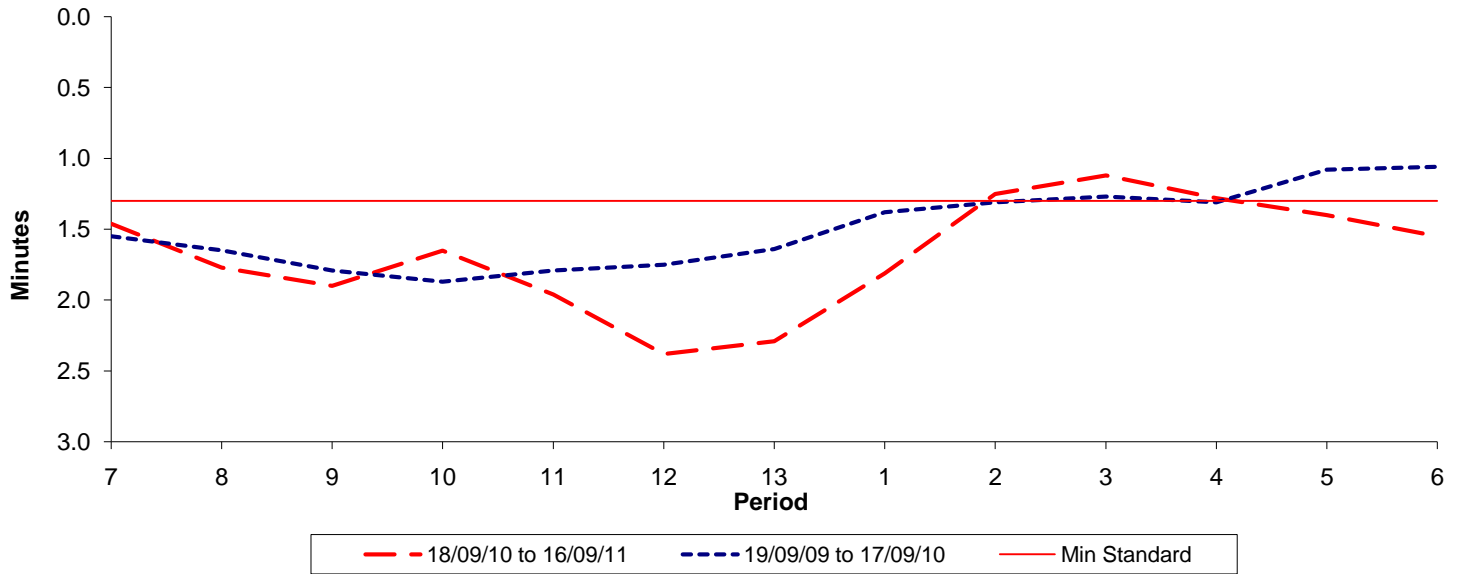




**Reliability Performance ( High Frequency )**

**Excess Waiting Time (minutes)**

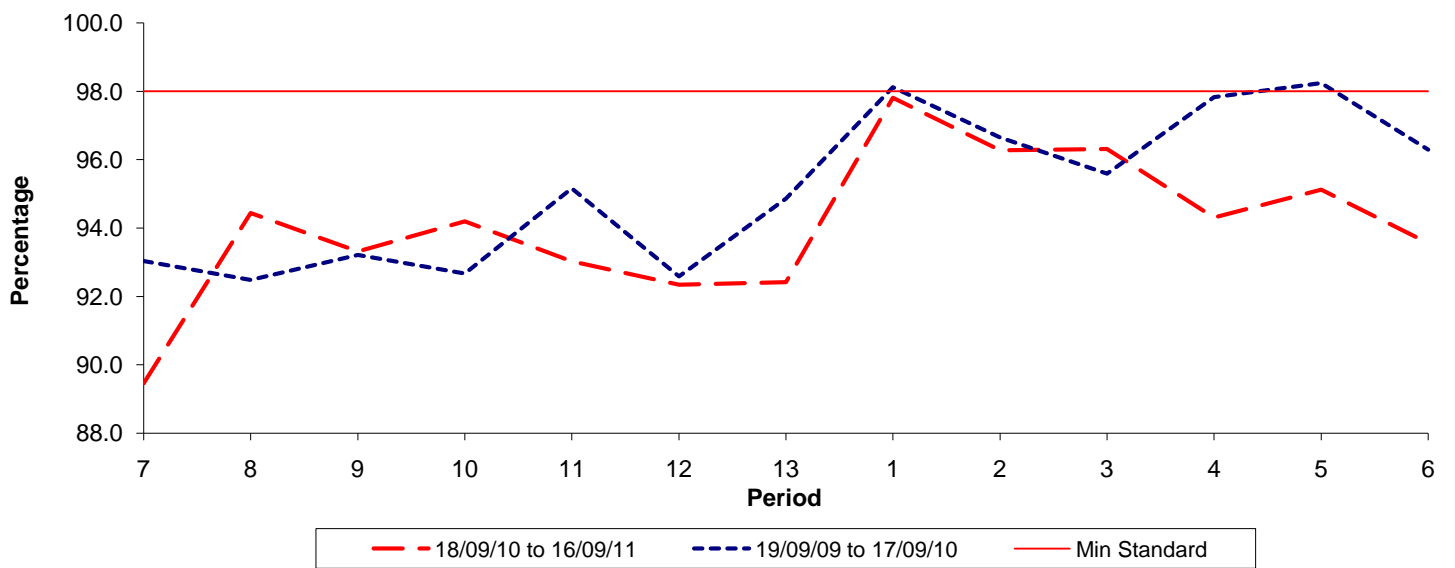


Date Range / Period	7	8	9	10	11	12	13	1	2	3	4	5	6
18/09/10 to 16/09/11	1.46	1.77	1.90	1.65	1.96	2.38	2.29	1.81	1.25	1.12	1.28	1.40	1.55
19/09/09 to 17/09/10	1.55	1.65	1.79	1.87	1.79	1.75	1.64	1.38	1.31	1.27	1.31	1.08	1.06
Min Standard	1.30	1.30	1.30	1.30	1.30	1.30	1.30	1.30	1.30	1.30	1.30	1.30	1.30

Excess Waiting Time figures are based on 12 weeks data

**Kilometre Performance**

**% Kilometres Operated**



Date Range / Period	7	8	9	10	11	12	13	1	2	3	4	5	6
18/09/10 to 16/09/11	89.45	94.44	93.31	94.20	93.02	92.34	92.41	97.81	96.27	96.31	94.31	95.12	93.56
19/09/09 to 17/09/10	93.03	92.48	93.21	92.66	95.16	92.58	94.86	98.12	96.65	95.59	97.83	98.24	96.29
Min Standard	98.00	98.00	98.00	98.00	98.00	98.00	98.00	98.00	98.00	98.00	98.00	98.00	98.00

Kilometre figures are based on 4 weeks data