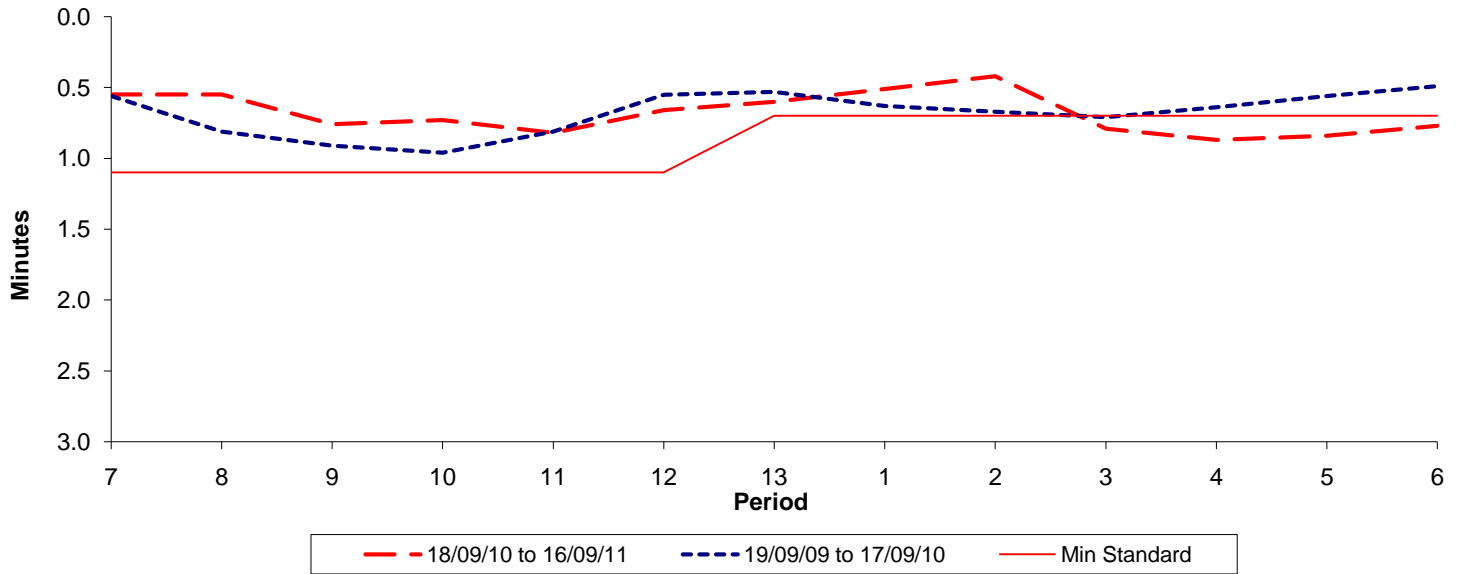




Reliability Performance (High Frequency)

Excess Waiting Time (minutes)

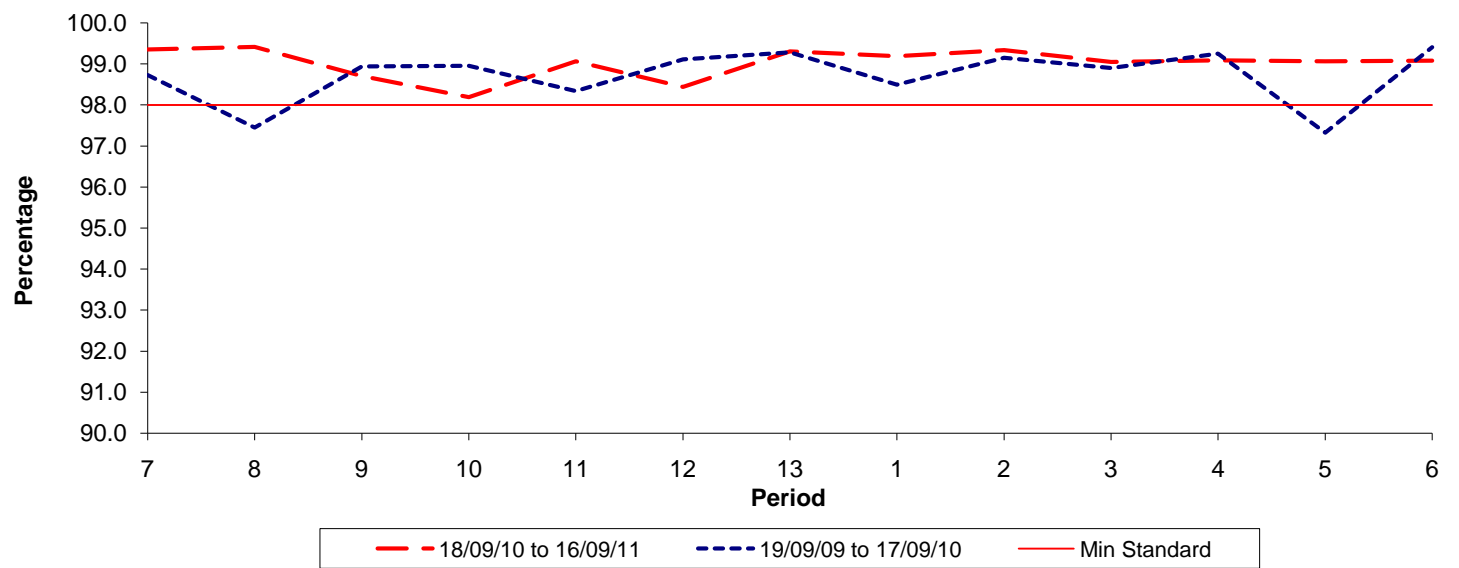


Date Range / Period	7	8	9	10	11	12	13	1	2	3	4	5	6
18/09/10 to 16/09/11	0.55	0.55	0.76	0.73	0.82	0.66	0.60	0.51	0.42	0.79	0.87	0.84	0.77
19/09/09 to 17/09/10	0.56	0.81	0.91	0.96	0.81	0.55	0.53	0.63	0.67	0.71	0.64	0.56	0.49
Min Standard	1.10	1.10	1.10	1.10	1.10	1.10	0.70	0.70	0.70	0.70	0.70	0.70	0.70

Excess Waiting Time figures are based on 12 weeks data

Kilometre Performance

% Kilometres Operated



Date Range / Period	7	8	9	10	11	12	13	1	2	3	4	5	6
18/09/10 to 16/09/11	99.36	99.42	98.71	98.19	99.07	98.45	99.31	99.19	99.34	99.05	99.09	99.07	99.08
19/09/09 to 17/09/10	98.73	97.45	98.94	98.95	98.33	99.11	99.28	98.49	99.14	98.90	99.25	97.32	99.41
Min Standard	98.00	98.00	98.00	98.00	98.00	98.00	98.00	98.00	98.00	98.00	98.00	98.00	98.00

Kilometre figures are based on 4 weeks data