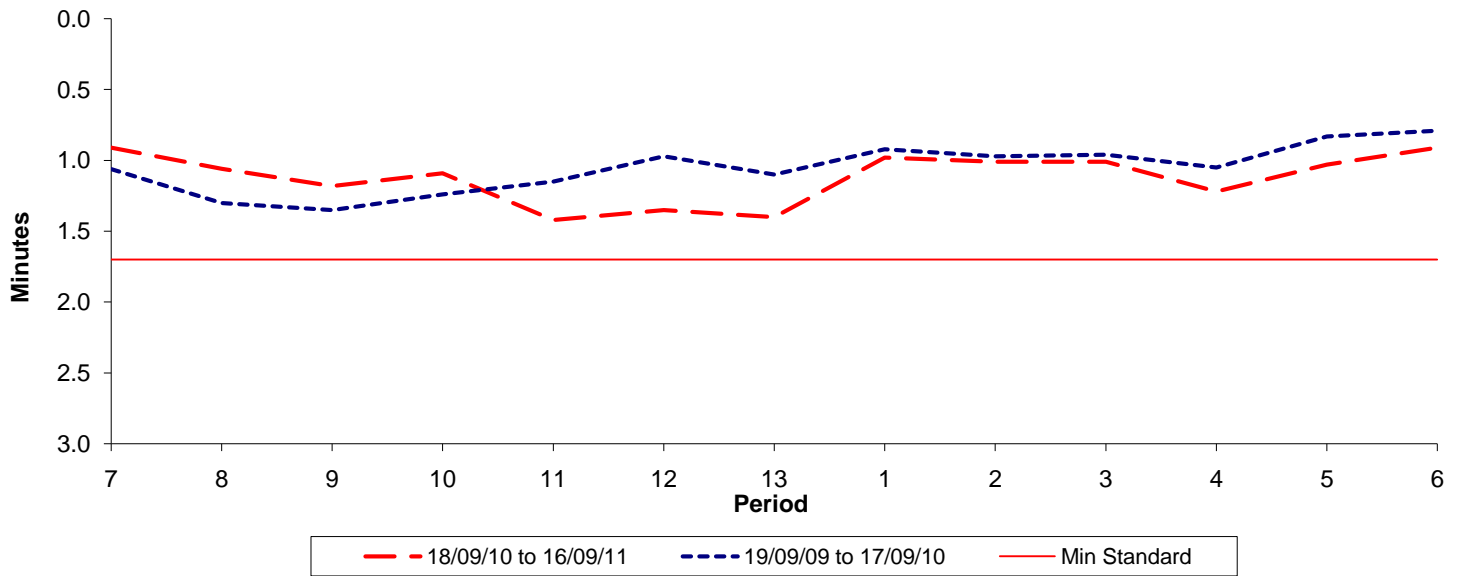




Reliability Performance (High Frequency)

Excess Waiting Time (minutes)

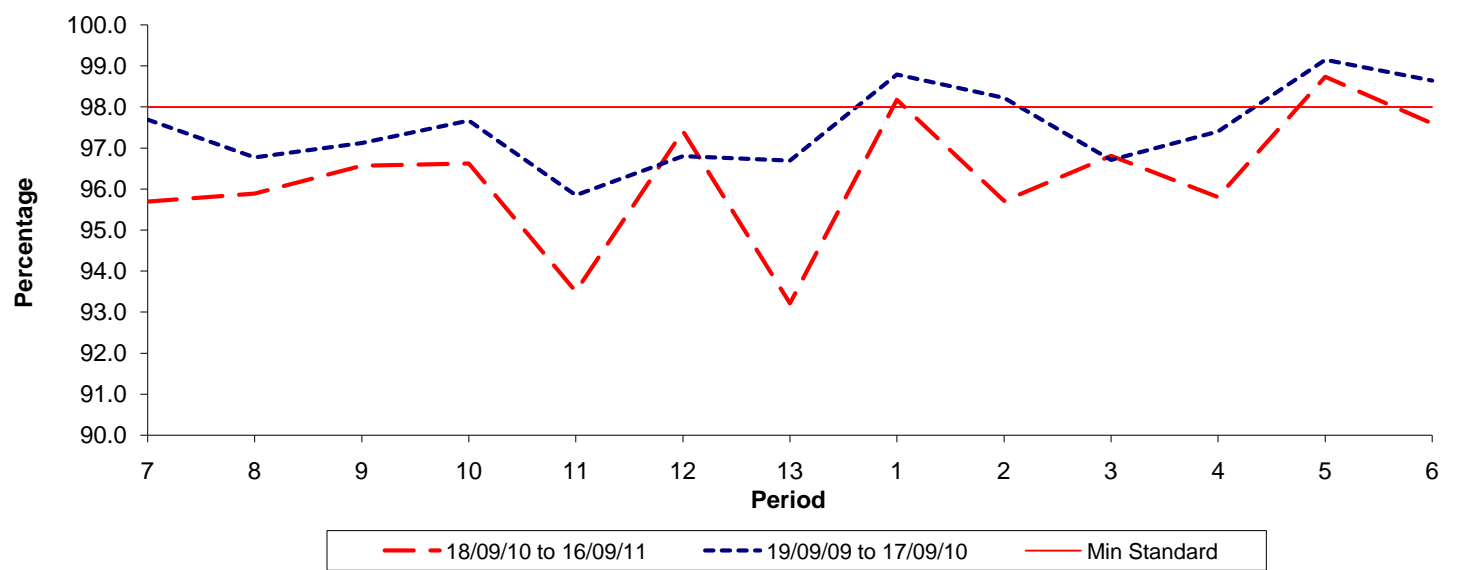


Date Range / Period	7	8	9	10	11	12	13	1	2	3	4	5	6
18/09/10 to 16/09/11	0.91	1.06	1.18	1.09	1.42	1.35	1.40	0.98	1.01	1.01	1.22	1.03	0.91
19/09/09 to 17/09/10	1.06	1.30	1.35	1.24	1.15	0.97	1.10	0.92	0.97	0.96	1.05	0.83	0.79
Min Standard	1.70	1.70	1.70	1.70	1.70	1.70	1.70	1.70	1.70	1.70	1.70	1.70	1.70

Excess Waiting Time figures are based on 12 weeks data

Kilometre Performance

% Kilometres Operated



Date Range / Period	7	8	9	10	11	12	13	1	2	3	4	5	6
18/09/10 to 16/09/11	95.69	95.89	96.57	96.62	93.50	97.41	93.21	98.18	95.71	96.81	95.80	98.74	97.60
19/09/09 to 17/09/10	97.69	96.77	97.12	97.67	95.85	96.80	96.69	98.79	98.22	96.71	97.40	99.15	98.64
Min Standard	98.00	98.00	98.00	98.00	98.00	98.00	98.00	98.00	98.00	98.00	98.00	98.00	98.00

Kilometre figures are based on 4 weeks data