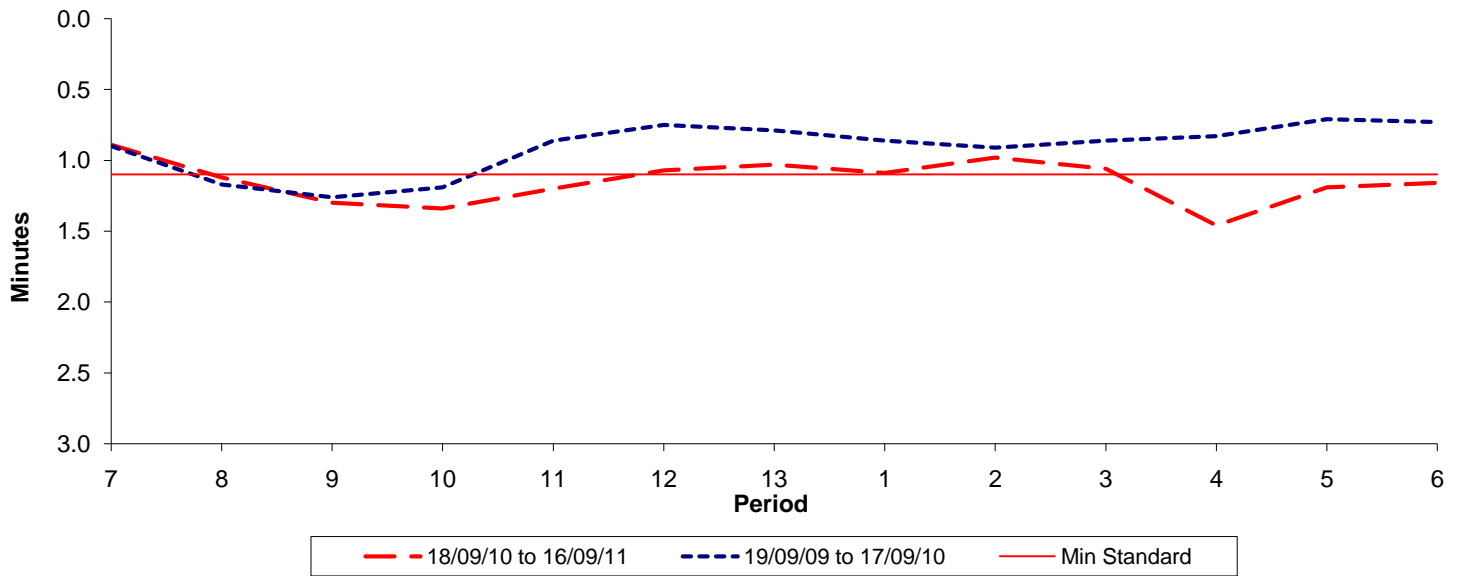




Reliability Performance (High Frequency)

Excess Waiting Time (minutes)

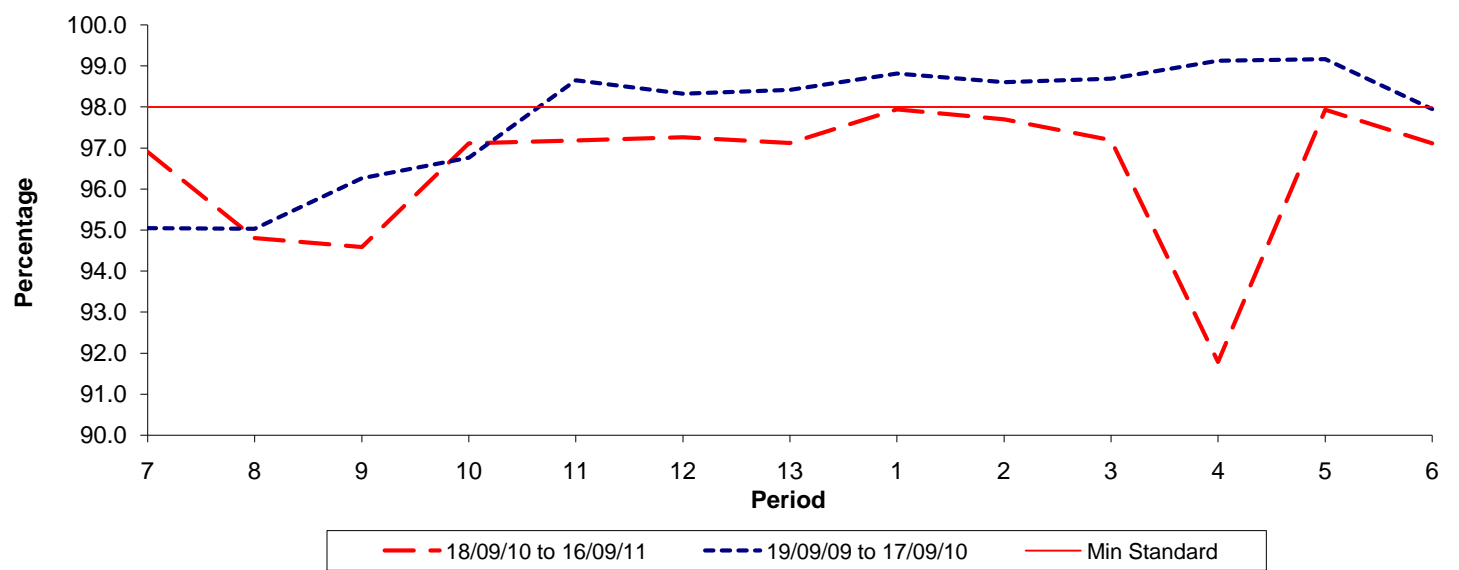


Date Range / Period	7	8	9	10	11	12	13	1	2	3	4	5	6
18/09/10 to 16/09/11	0.89	1.12	1.30	1.34	1.20	1.07	1.03	1.09	0.98	1.06	1.46	1.19	1.16
19/09/09 to 17/09/10	0.90	1.17	1.26	1.19	0.86	0.75	0.79	0.86	0.91	0.86	0.83	0.71	0.73
Min Standard	1.10	1.10	1.10	1.10	1.10	1.10	1.10	1.10	1.10	1.10	1.10	1.10	1.10

Excess Waiting Time figures are based on 12 weeks data

Kilometre Performance

% Kilometres Operated



Date Range / Period	7	8	9	10	11	12	13	1	2	3	4	5	6
18/09/10 to 16/09/11	96.90	94.80	94.58	97.11	97.18	97.26	97.12	97.94	97.70	97.19	91.78	97.93	97.11
19/09/09 to 17/09/10	95.05	95.03	96.26	96.76	98.65	98.32	98.41	98.81	98.60	98.69	99.12	99.16	97.94
Min Standard	98.00	98.00	98.00	98.00	98.00	98.00	98.00	98.00	98.00	98.00	98.00	98.00	98.00

Kilometre figures are based on 4 weeks data