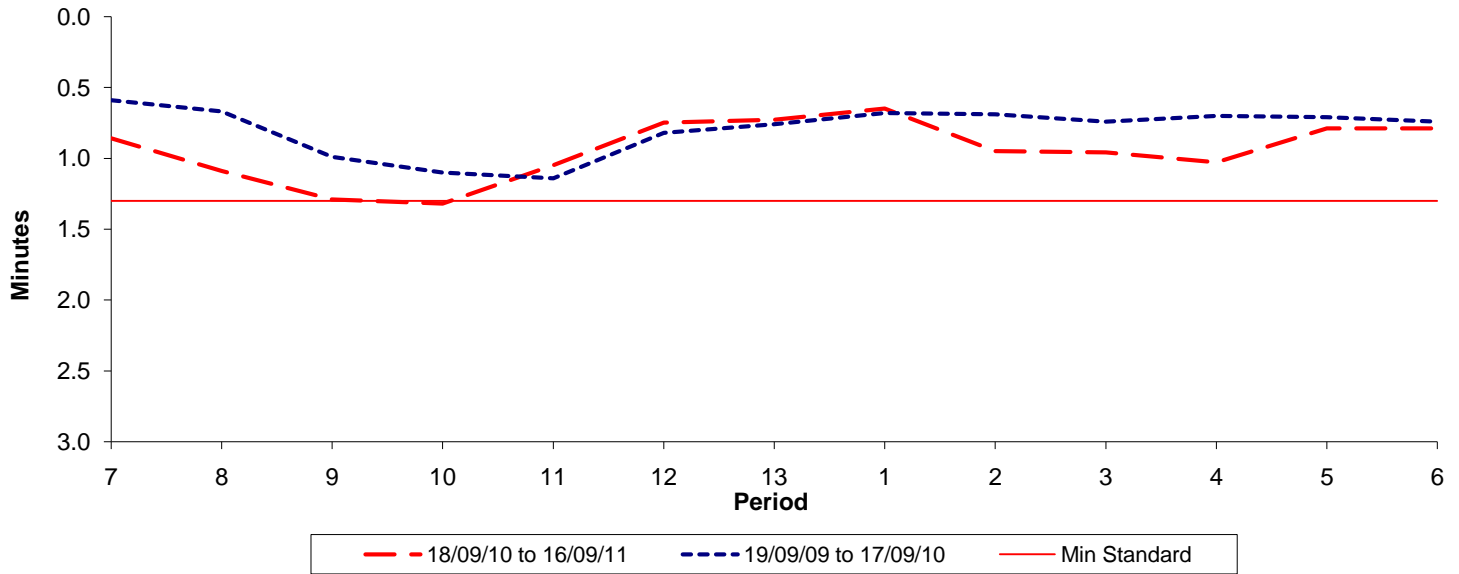




Reliability Performance (High Frequency)

Excess Waiting Time (minutes)

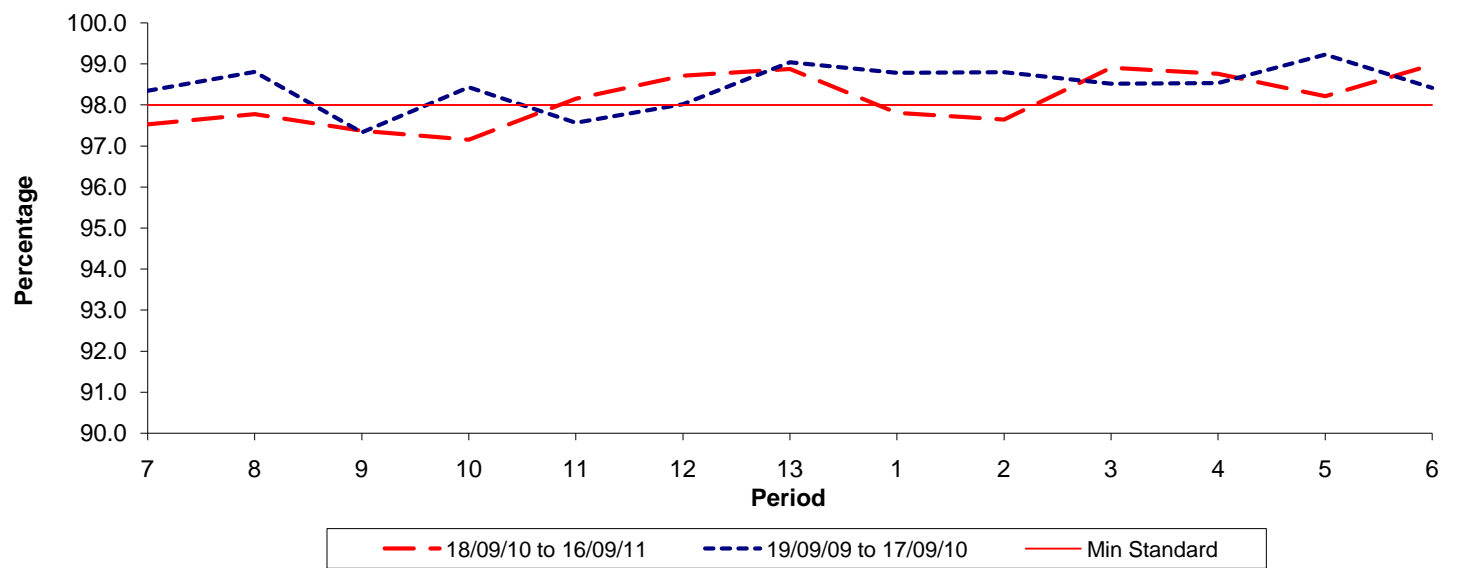


Date Range / Period	7	8	9	10	11	12	13	1	2	3	4	5	6
18/09/10 to 16/09/11	0.86	1.09	1.29	1.32	1.05	0.75	0.73	0.65	0.95	0.96	1.03	0.79	0.79
19/09/09 to 17/09/10	0.59	0.67	0.99	1.10	1.14	0.82	0.76	0.68	0.69	0.74	0.70	0.71	0.74
Min Standard	1.30	1.30	1.30	1.30	1.30	1.30	1.30	1.30	1.30	1.30	1.30	1.30	1.30

Excess Waiting Time figures are based on 12 weeks data

Kilometre Performance

% Kilometres Operated



Date Range / Period	7	8	9	10	11	12	13	1	2	3	4	5	6
18/09/10 to 16/09/11	97.53	97.78	97.37	97.15	98.15	98.71	98.88	97.81	97.64	98.91	98.76	98.21	98.98
19/09/09 to 17/09/10	98.35	98.81	97.33	98.43	97.56	98.02	99.04	98.78	98.80	98.52	98.53	99.23	98.41
Min Standard	98.00	98.00	98.00	98.00	98.00	98.00	98.00	98.00	98.00	98.00	98.00	98.00	98.00

Kilometre figures are based on 4 weeks data