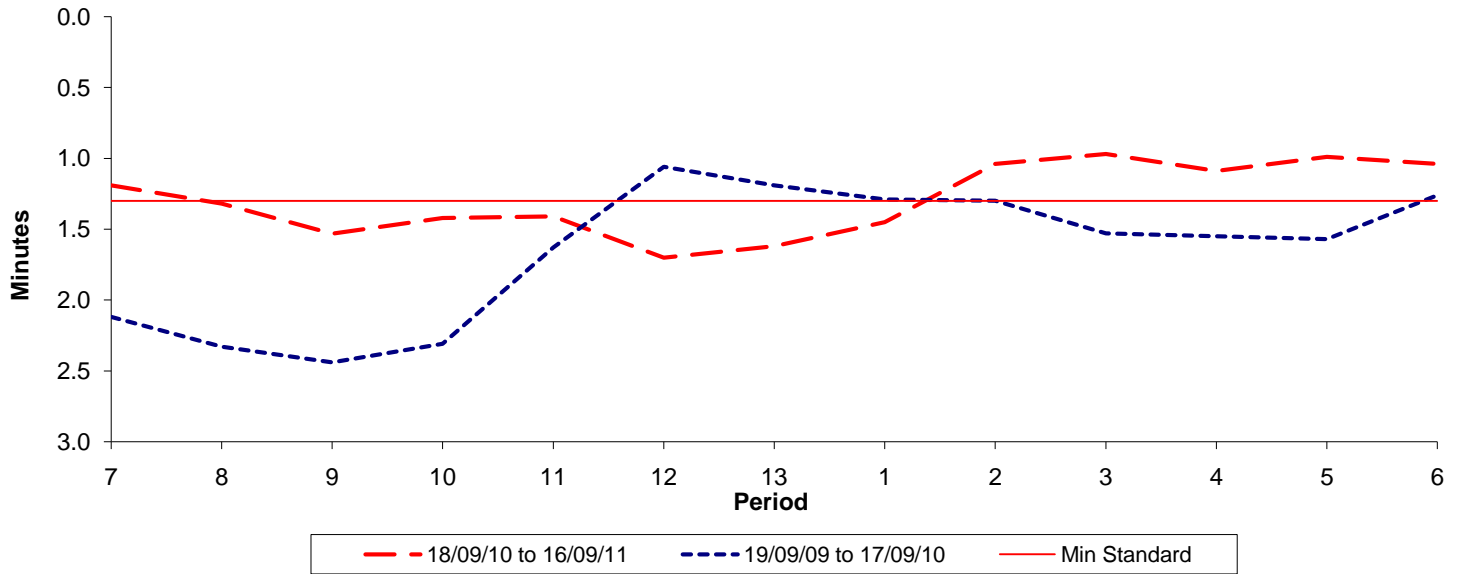




**Reliability Performance ( High Frequency )**

Excess Waiting Time (minutes)

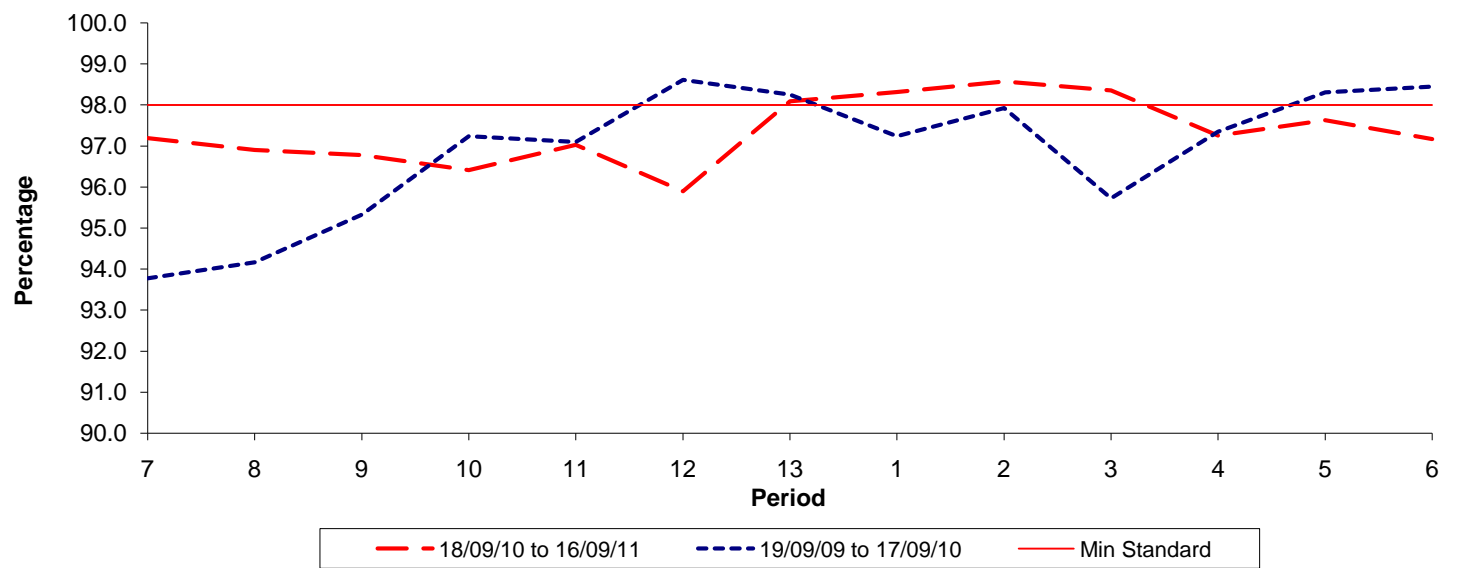


Date Range / Period	7	8	9	10	11	12	13	1	2	3	4	5	6
18/09/10 to 16/09/11	1.19	1.32	1.53	1.42	1.41	1.70	1.62	1.45	1.04	0.97	1.09	0.99	1.04
19/09/09 to 17/09/10	2.12	2.33	2.44	2.31	1.63	1.06	1.19	1.29	1.30	1.53	1.55	1.57	1.26
Min Standard	1.30	1.30	1.30	1.30	1.30	1.30	1.30	1.30	1.30	1.30	1.30	1.30	1.30

Excess Waiting Time figures are based on 12 weeks data

**Kilometre Performance**

% Kilometres Operated



Date Range / Period	7	8	9	10	11	12	13	1	2	3	4	5	6
18/09/10 to 16/09/11	97.19	96.90	96.78	96.41	97.03	95.90	98.09	98.31	98.57	98.35	97.25	97.63	97.17
19/09/09 to 17/09/10	93.77	94.16	95.33	97.23	97.10	98.61	98.25	97.24	97.93	95.73	97.35	98.30	98.45
Min Standard	98.00	98.00	98.00	98.00	98.00	98.00	98.00	98.00	98.00	98.00	98.00	98.00	98.00

Kilometre figures are based on 4 weeks data