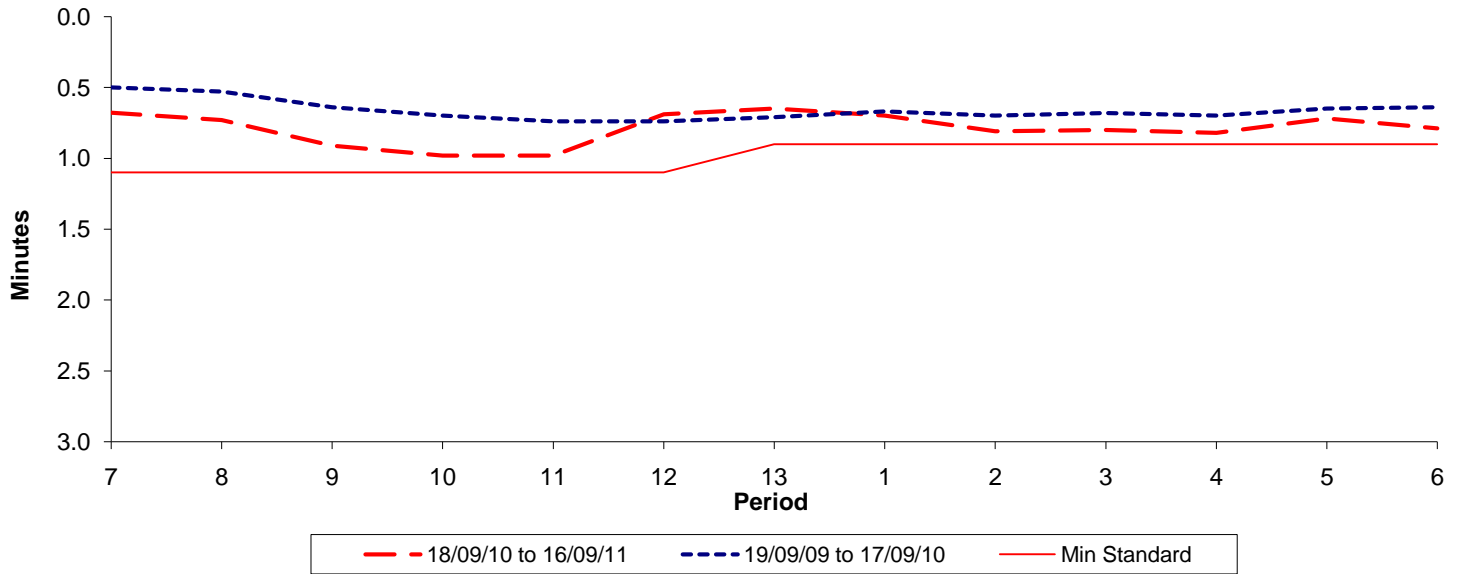




**Reliability Performance ( High Frequency )**

Excess Waiting Time (minutes)

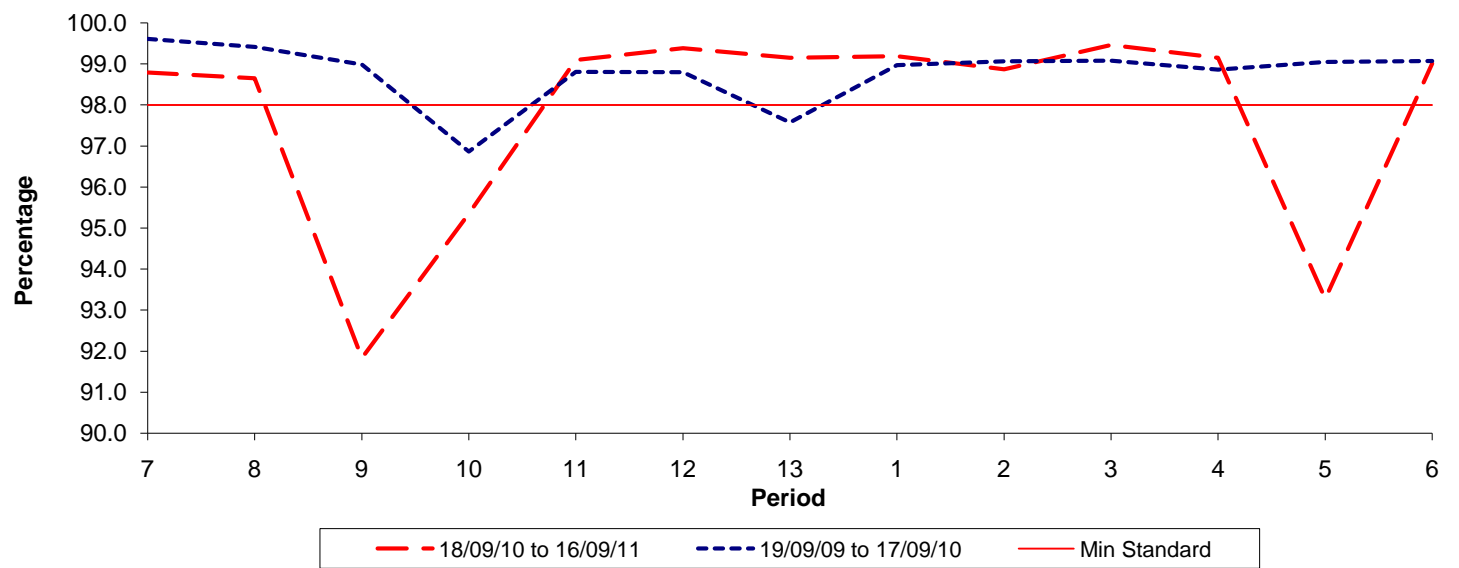


Date Range / Period	7	8	9	10	11	12	13	1	2	3	4	5	6
18/09/10 to 16/09/11	0.68	0.73	0.91	0.98	0.98	0.69	0.65	0.70	0.81	0.80	0.82	0.72	0.79
19/09/09 to 17/09/10	0.50	0.53	0.64	0.70	0.74	0.74	0.71	0.67	0.70	0.68	0.70	0.65	0.64
Min Standard	1.10	1.10	1.10	1.10	1.10	1.10	0.90	0.90	0.90	0.90	0.90	0.90	0.90

Excess Waiting Time figures are based on 12 weeks data

**Kilometre Performance**

% Kilometres Operated



Date Range / Period	7	8	9	10	11	12	13	1	2	3	4	5	6
18/09/10 to 16/09/11	98.79	98.65	91.83	95.35	99.09	99.38	99.15	99.19	98.87	99.46	99.15	93.27	99.01
19/09/09 to 17/09/10	99.61	99.42	98.99	96.87	98.81	98.80	97.57	98.97	99.07	99.08	98.86	99.05	99.08
Min Standard	98.00	98.00	98.00	98.00	98.00	98.00	98.00	98.00	98.00	98.00	98.00	98.00	98.00

Kilometre figures are based on 4 weeks data