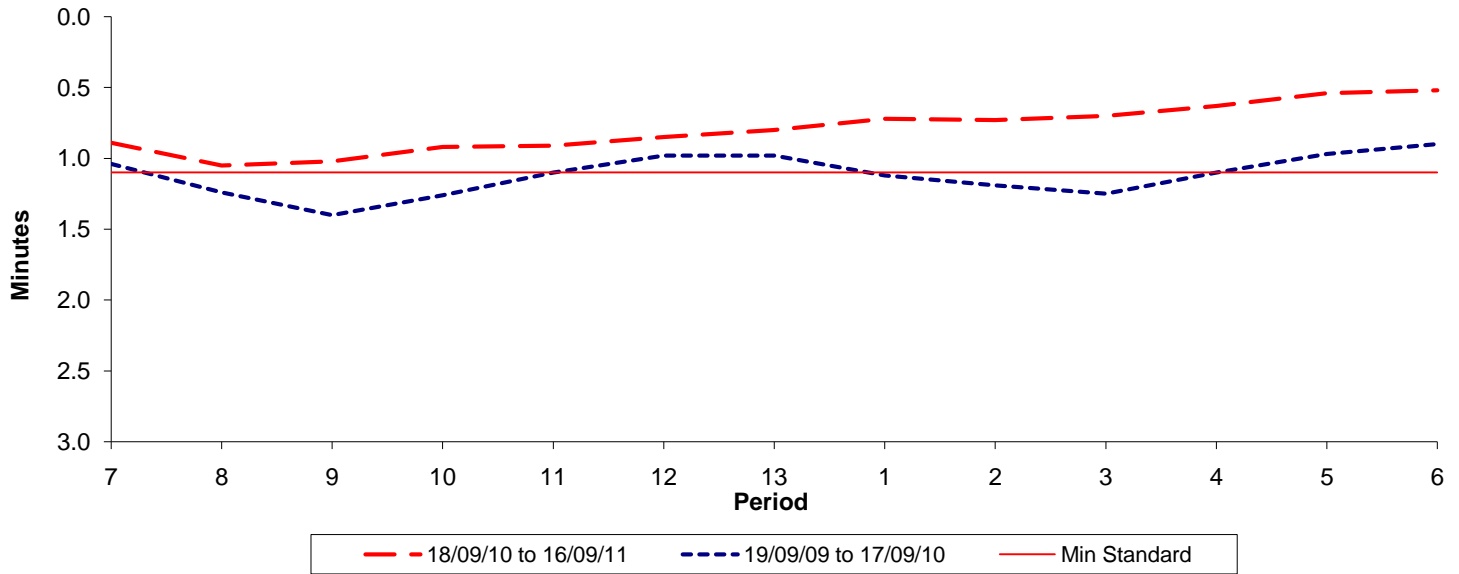




Reliability Performance (High Frequency)

Excess Waiting Time (minutes)

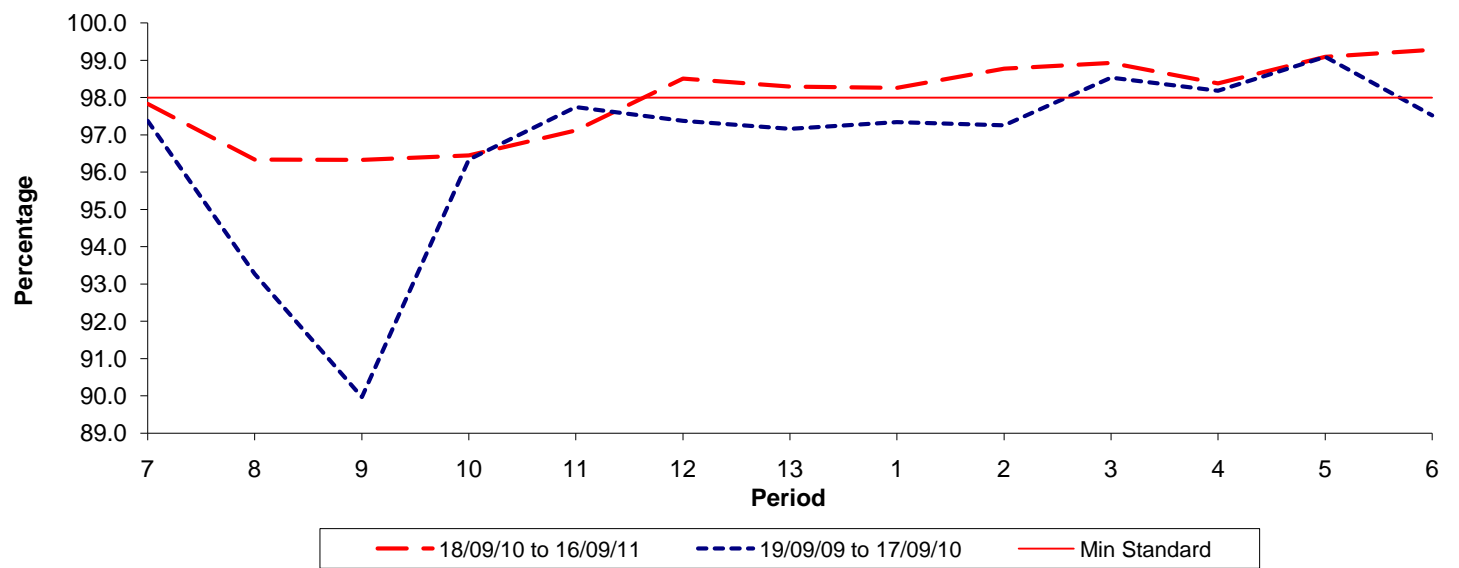


Date Range / Period	7	8	9	10	11	12	13	1	2	3	4	5	6
18/09/10 to 16/09/11	0.89	1.05	1.02	0.92	0.91	0.85	0.80	0.72	0.73	0.70	0.63	0.54	0.52
19/09/09 to 17/09/10	1.04	1.24	1.40	1.26	1.10	0.98	0.98	1.12	1.19	1.25	1.10	0.97	0.90
Min Standard	1.10	1.10	1.10	1.10	1.10	1.10	1.10	1.10	1.10	1.10	1.10	1.10	1.10

Excess Waiting Time figures are based on 12 weeks data

Kilometre Performance

% Kilometres Operated



Date Range / Period	7	8	9	10	11	12	13	1	2	3	4	5	6
18/09/10 to 16/09/11	97.83	96.34	96.33	96.45	97.12	98.51	98.29	98.26	98.77	98.93	98.38	99.09	99.28
19/09/09 to 17/09/10	97.37	93.27	89.97	96.34	97.74	97.37	97.16	97.34	97.25	98.53	98.18	99.09	97.52
Min Standard	98.00	98.00	98.00	98.00	98.00	98.00	98.00	98.00	98.00	98.00	98.00	98.00	98.00

Kilometre figures are based on 4 weeks data