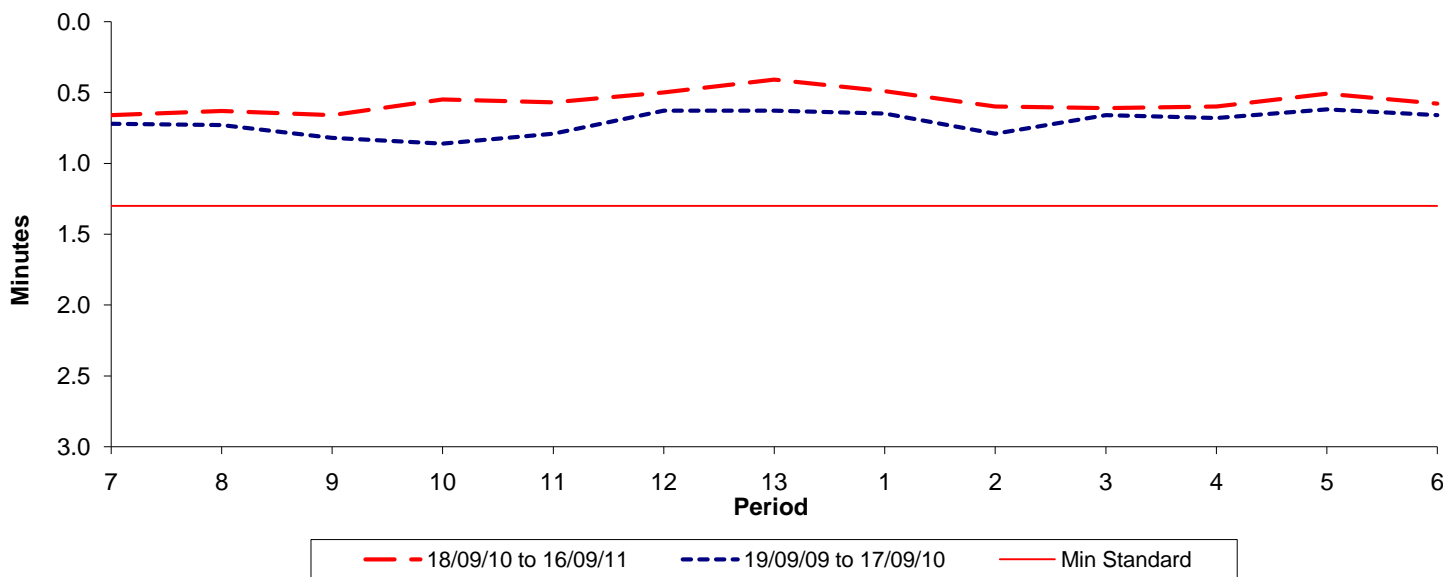




Reliability Performance (High Frequency)

Excess Waiting Time (minutes)

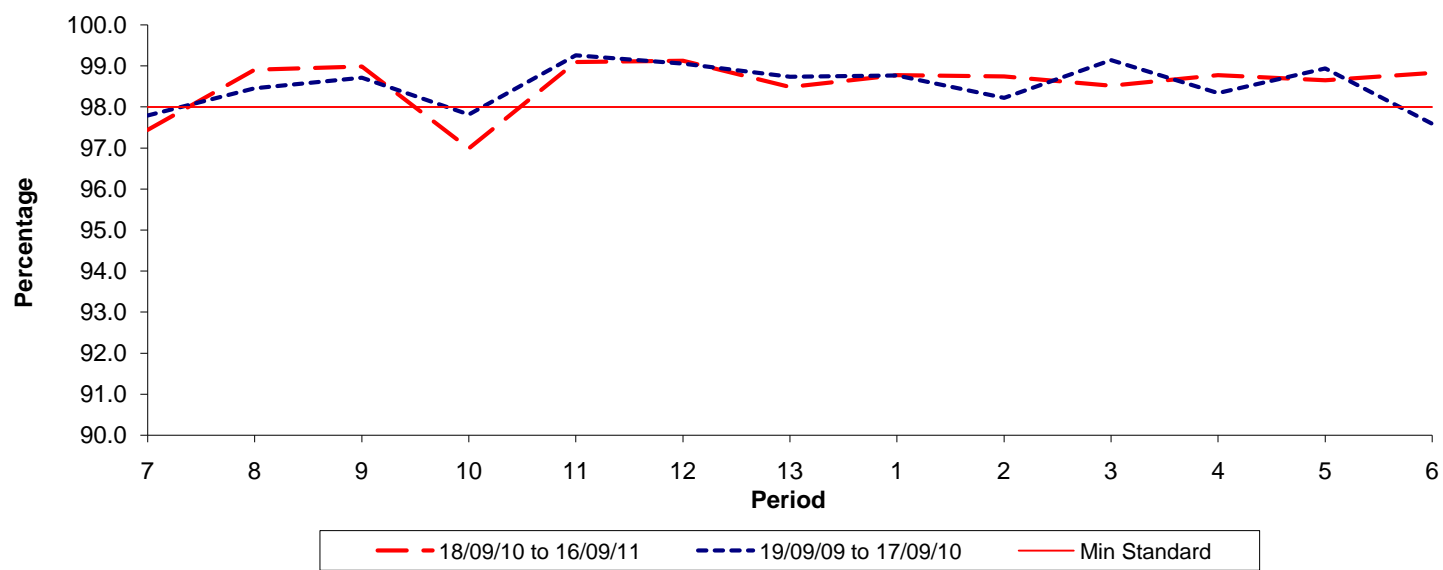


Date Range / Period	7	8	9	10	11	12	13	1	2	3	4	5	6
18/09/10 to 16/09/11	0.66	0.63	0.66	0.55	0.57	0.50	0.41	0.49	0.60	0.61	0.60	0.51	0.58
19/09/09 to 17/09/10	0.72	0.73	0.82	0.86	0.79	0.63	0.63	0.65	0.79	0.66	0.68	0.62	0.66
Min Standard	1.30	1.30	1.30	1.30	1.30	1.30	1.30	1.30	1.30	1.30	1.30	1.30	1.30

Excess Waiting Time figures are based on 12 weeks data

Kilometre Performance

% Kilometres Operated



Date Range / Period	7	8	9	10	11	12	13	1	2	3	4	5	6
18/09/10 to 16/09/11	97.44	98.91	98.99	96.99	99.10	99.13	98.49	98.78	98.75	98.52	98.78	98.65	98.83
19/09/09 to 17/09/10	97.79	98.46	98.71	97.82	99.26	99.06	98.74	98.77	98.22	99.14	98.34	98.94	97.59
Min Standard	98.00	98.00	98.00	98.00	98.00	98.00	98.00	98.00	98.00	98.00	98.00	98.00	98.00

Kilometre figures are based on 4 weeks data