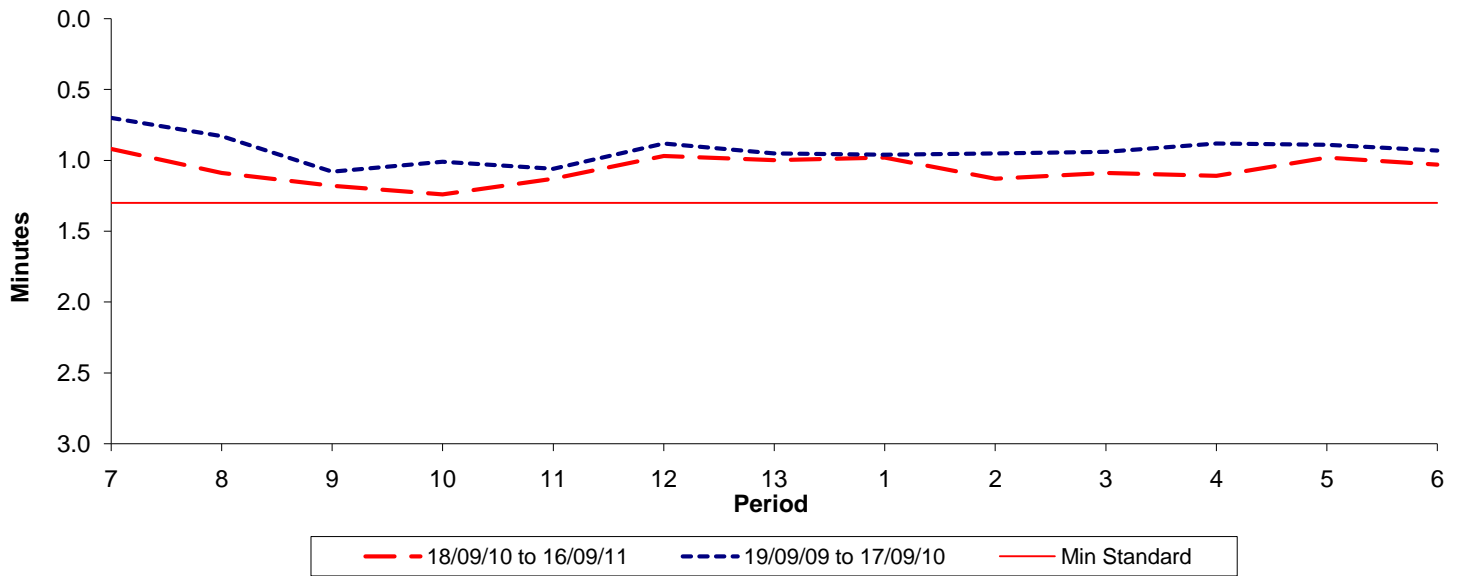




**Reliability Performance ( High Frequency )**

Excess Waiting Time (minutes)

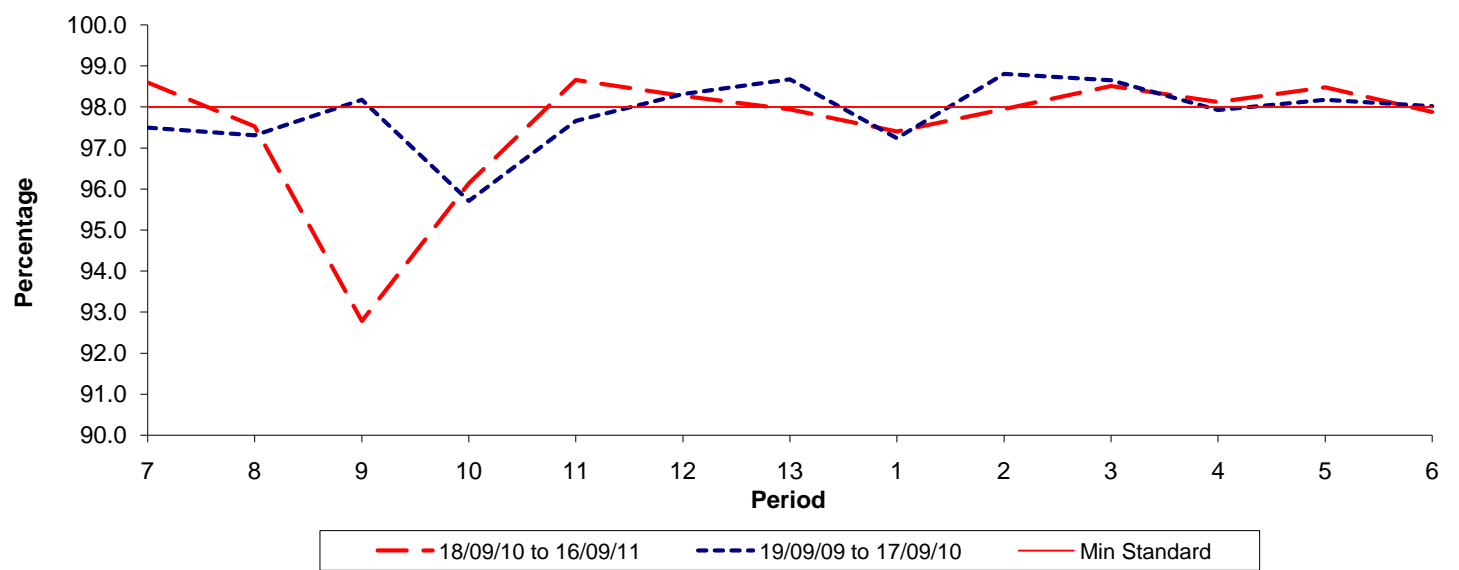


Date Range / Period	7	8	9	10	11	12	13	1	2	3	4	5	6
18/09/10 to 16/09/11	0.92	1.09	1.18	1.24	1.13	0.97	1.00	0.98	1.13	1.09	1.11	0.98	1.03
19/09/09 to 17/09/10	0.70	0.83	1.08	1.01	1.06	0.88	0.95	0.96	0.95	0.94	0.88	0.89	0.93
Min Standard	1.30	1.30	1.30	1.30	1.30	1.30	1.30	1.30	1.30	1.30	1.30	1.30	1.30

Excess Waiting Time figures are based on 12 weeks data

**Kilometre Performance**

% Kilometres Operated



Date Range / Period	7	8	9	10	11	12	13	1	2	3	4	5	6
18/09/10 to 16/09/11	98.60	97.53	92.78	96.14	98.66	98.27	97.94	97.40	97.95	98.51	98.12	98.48	97.88
19/09/09 to 17/09/10	97.50	97.31	98.18	95.71	97.66	98.32	98.68	97.24	98.81	98.65	97.93	98.18	98.02
Min Standard	98.00	98.00	98.00	98.00	98.00	98.00	98.00	98.00	98.00	98.00	98.00	98.00	98.00

Kilometre figures are based on 4 weeks data