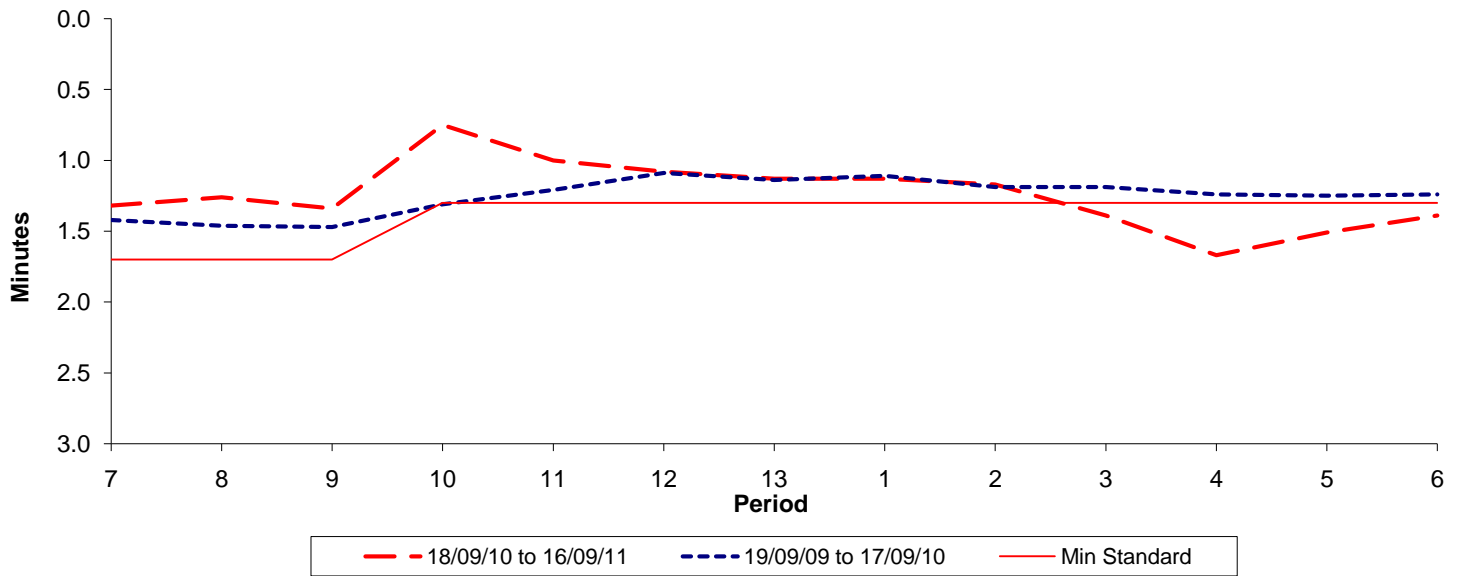




**Reliability Performance ( High Frequency )**

**Excess Waiting Time (minutes)**

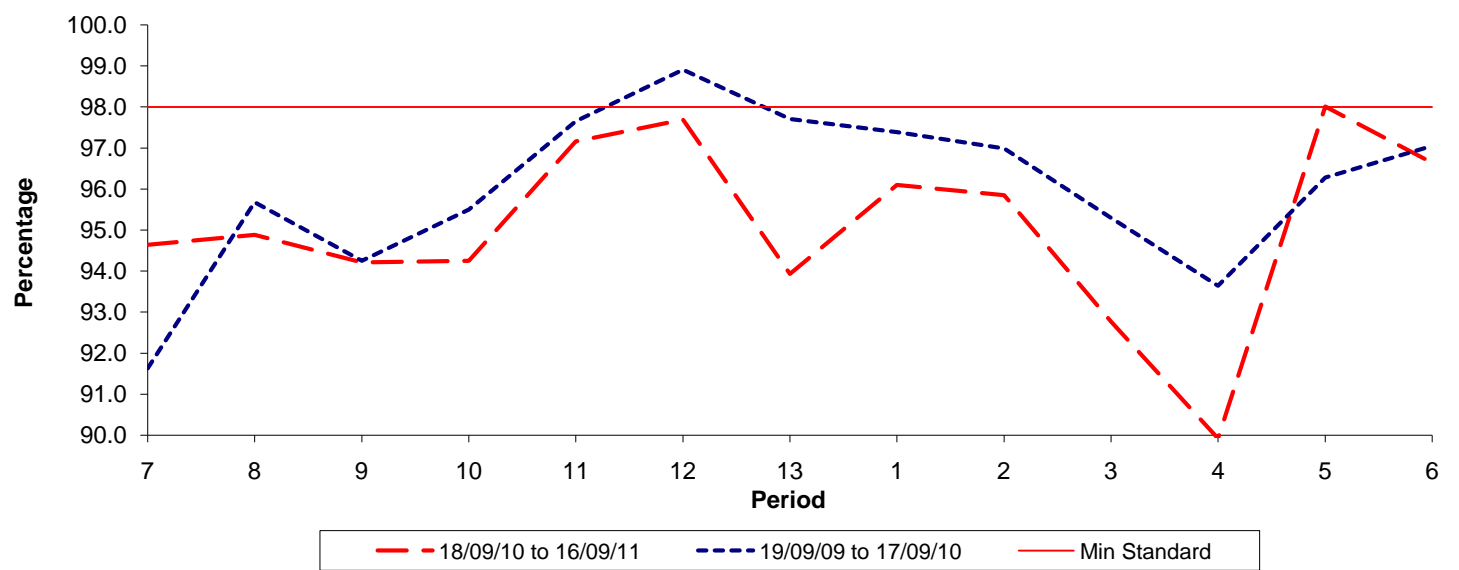


Date Range / Period	7	8	9	10	11	12	13	1	2	3	4	5	6
18/09/10 to 16/09/11	1.32	1.26	1.34	0.75	1.00	1.08	1.13	1.13	1.17	1.39	1.67	1.51	1.39
19/09/09 to 17/09/10	1.42	1.46	1.47	1.31	1.21	1.09	1.14	1.11	1.19	1.19	1.24	1.25	1.24
Min Standard	1.70	1.70	1.70	1.30	1.30	1.30	1.30	1.30	1.30	1.30	1.30	1.30	1.30

Excess Waiting Time figures are based on 12 weeks data

**Kilometre Performance**

**% Kilometres Operated**



Date Range / Period	7	8	9	10	11	12	13	1	2	3	4	5	6
18/09/10 to 16/09/11	94.64	94.88	94.21	94.25	97.16	97.69	93.93	96.10	95.85	92.77	89.92	98.01	96.64
19/09/09 to 17/09/10	91.63	95.68	94.25	95.50	97.65	98.91	97.71	97.39	96.99	95.30	93.64	96.28	97.05
Min Standard	98.00	98.00	98.00	98.00	98.00	98.00	98.00	98.00	98.00	98.00	98.00	98.00	98.00

Kilometre figures are based on 4 weeks data