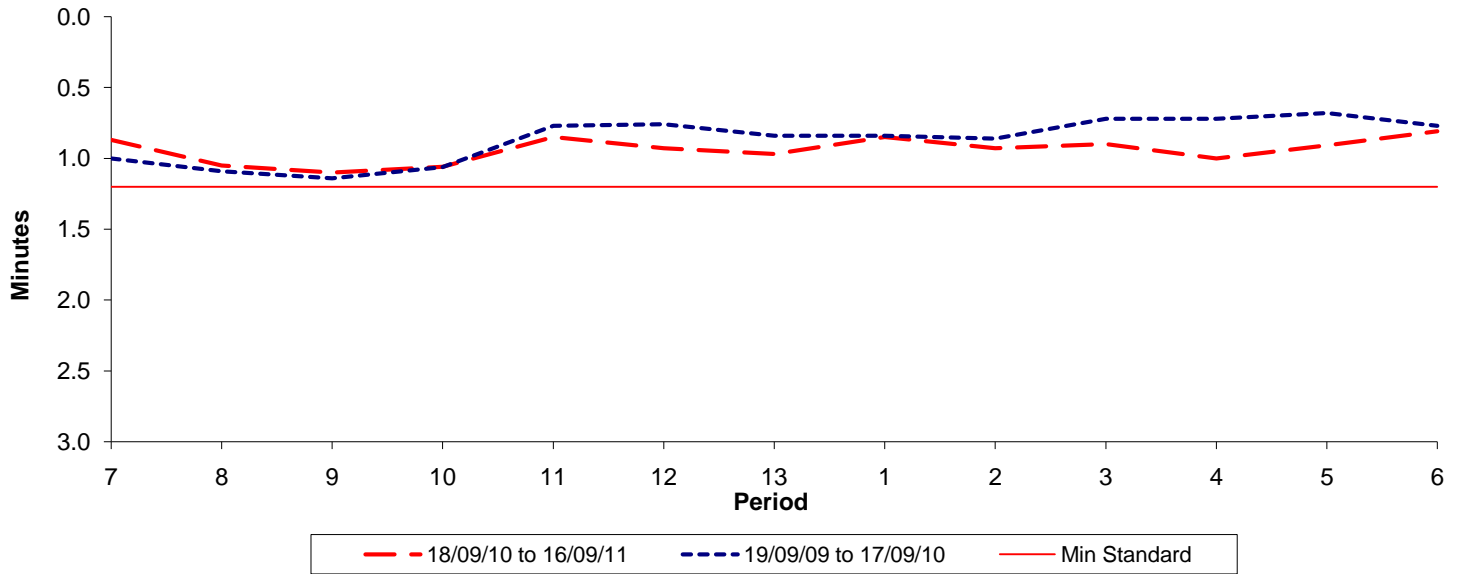




Reliability Performance (High Frequency)

Excess Waiting Time (minutes)

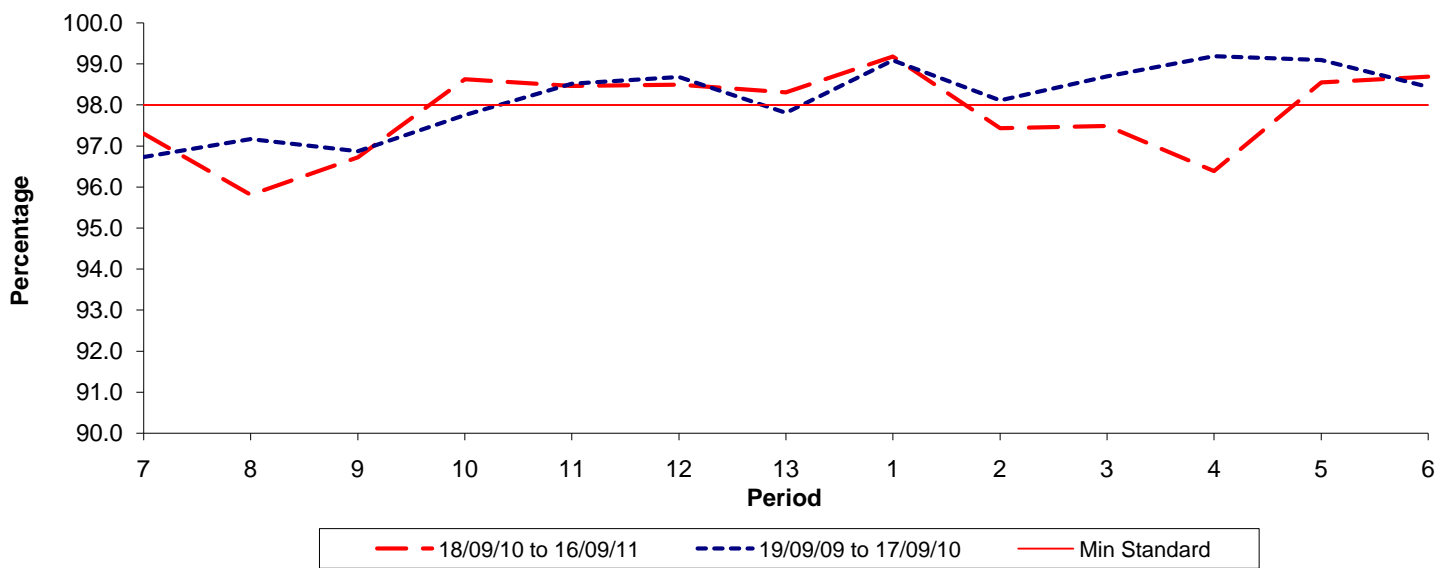


Date Range / Period	7	8	9	10	11	12	13	1	2	3	4	5	6
18/09/10 to 16/09/11	0.87	1.05	1.10	1.06	0.85	0.93	0.97	0.85	0.93	0.90	1.00	0.91	0.81
19/09/09 to 17/09/10	1.00	1.09	1.14	1.06	0.77	0.76	0.84	0.84	0.86	0.72	0.72	0.68	0.77
Min Standard	1.20	1.20	1.20	1.20	1.20	1.20	1.20	1.20	1.20	1.20	1.20	1.20	1.20

Excess Waiting Time figures are based on 12 weeks data

Kilometre Performance

% Kilometres Operated



Date Range / Period	7	8	9	10	11	12	13	1	2	3	4	5	6
18/09/10 to 16/09/11	97.30	95.81	96.72	98.63	98.46	98.49	98.31	99.18	97.43	97.49	96.39	98.55	98.69
19/09/09 to 17/09/10	96.73	97.17	96.87	97.75	98.52	98.68	97.81	99.09	98.11	98.70	99.19	99.10	98.44
Min Standard	98.00	98.00	98.00	98.00	98.00	98.00	98.00	98.00	98.00	98.00	98.00	98.00	98.00

Kilometre figures are based on 4 weeks data