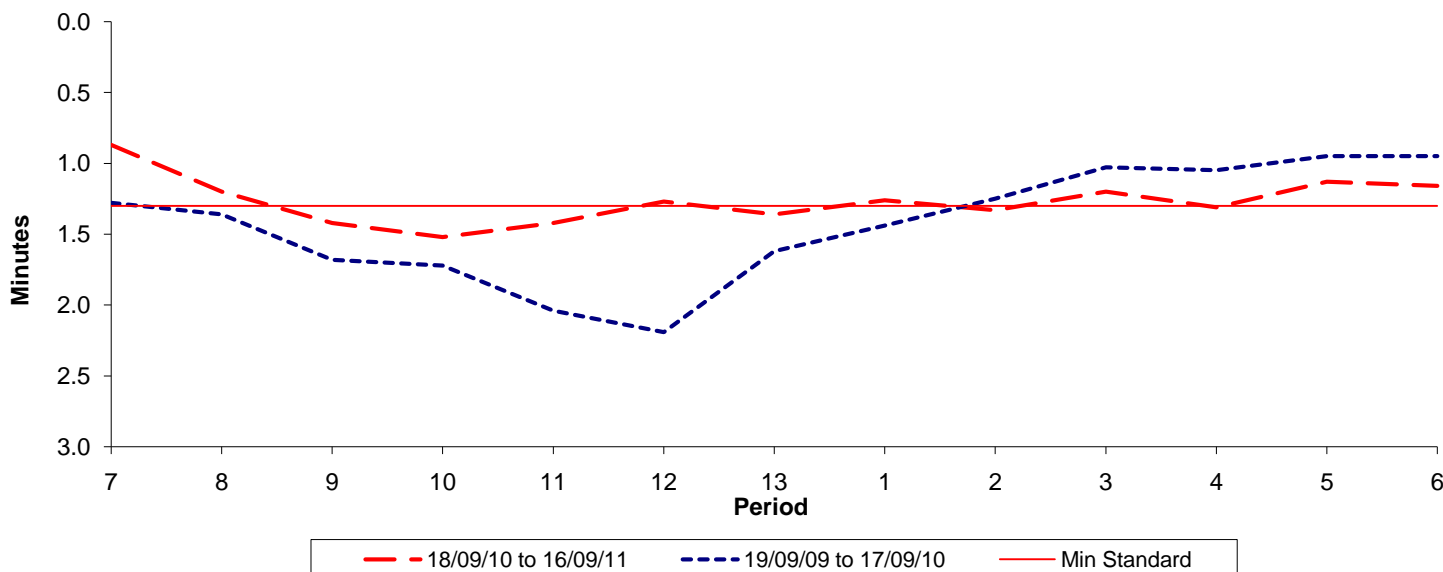




Reliability Performance (High Frequency)

Excess Waiting Time (minutes)

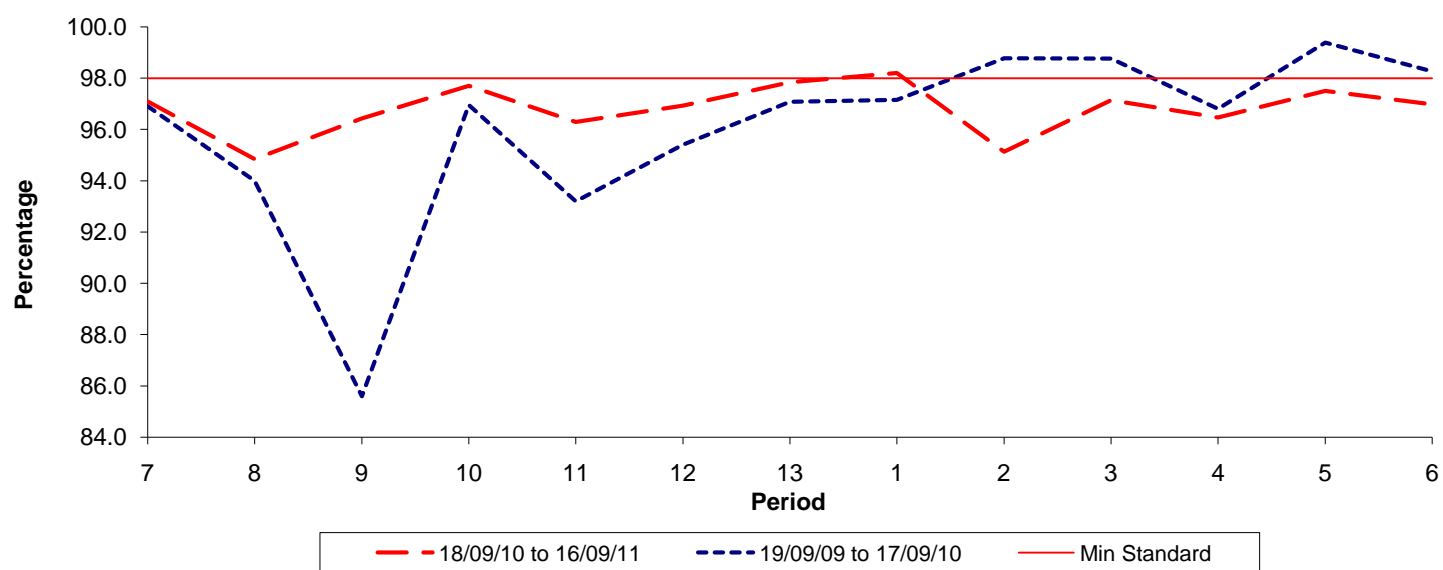


Date Range / Period	7	8	9	10	11	12	13	1	2	3	4	5	6
18/09/10 to 16/09/11	0.87	1.20	1.42	1.52	1.42	1.27	1.36	1.26	1.33	1.20	1.31	1.13	1.16
19/09/09 to 17/09/10	1.28	1.36	1.68	1.72	2.04	2.19	1.62	1.44	1.25	1.03	1.05	0.95	0.95
Min Standard	1.30	1.30	1.30	1.30	1.30	1.30	1.30	1.30	1.30	1.30	1.30	1.30	1.30

Excess Waiting Time figures are based on 12 weeks data

Kilometre Performance

% Kilometres Operated



Date Range / Period	7	8	9	10	11	12	13	1	2	3	4	5	6
18/09/10 to 16/09/11	97.09	94.84	96.43	97.70	96.29	96.93	97.84	98.20	95.13	97.14	96.47	97.50	96.98
19/09/09 to 17/09/10	96.91	94.00	85.59	96.96	93.19	95.40	97.08	97.16	98.78	98.76	96.81	99.39	98.27
Min Standard	98.00	98.00	98.00	98.00	98.00	98.00	98.00	98.00	98.00	98.00	98.00	98.00	98.00

Kilometre figures are based on 4 weeks data