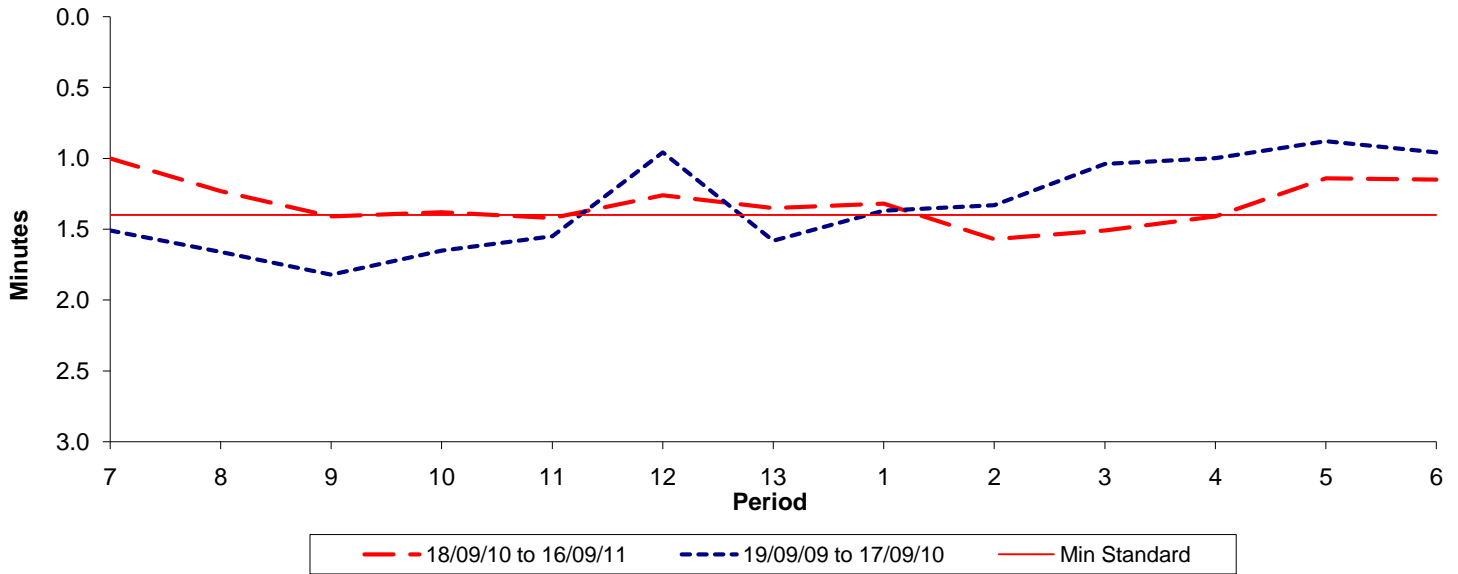




**Reliability Performance ( High Frequency )**

**Excess Waiting Time (minutes)**

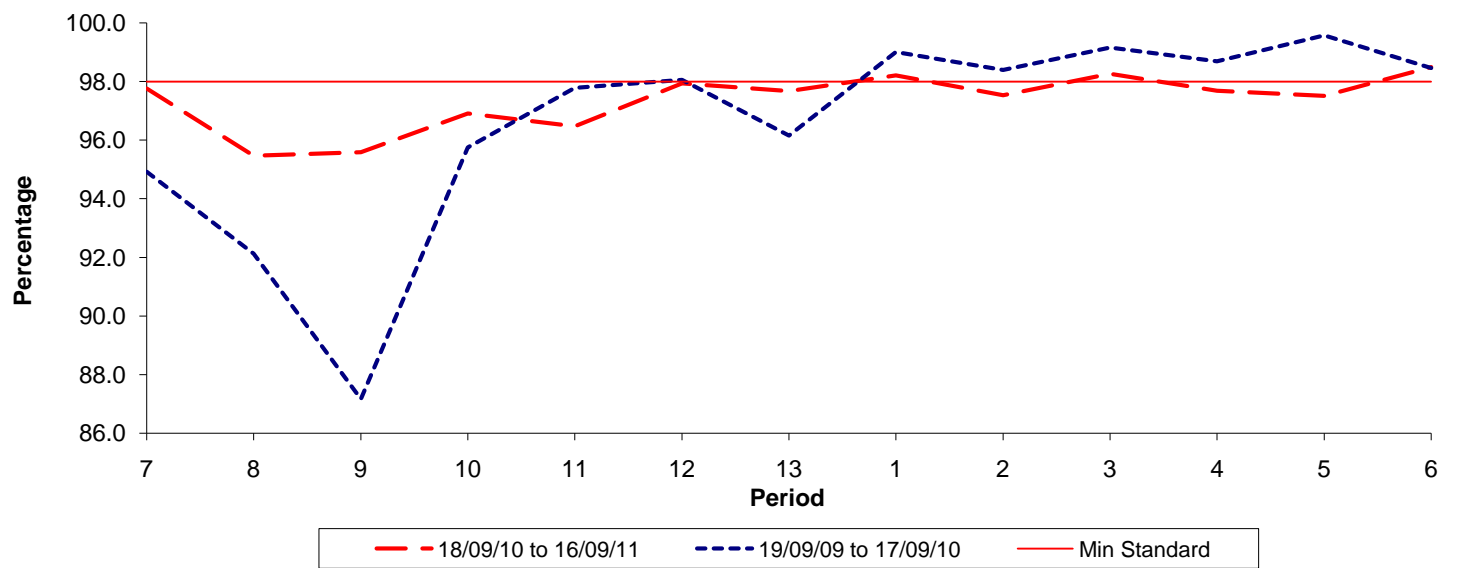


Date Range / Period	7	8	9	10	11	12	13	1	2	3	4	5	6
18/09/10 to 16/09/11	1.00	1.23	1.41	1.38	1.42	1.26	1.35	1.32	1.57	1.51	1.41	1.14	1.15
19/09/09 to 17/09/10	1.51	1.66	1.82	1.65	1.55	0.96	1.58	1.37	1.33	1.04	1.00	0.88	0.96
Min Standard	1.40	1.40	1.40	1.40	1.40	1.40	1.40	1.40	1.40	1.40	1.40	1.40	1.40

Excess Waiting Time figures are based on 12 weeks data

**Kilometre Performance**

**% Kilometres Operated**



Date Range / Period	7	8	9	10	11	12	13	1	2	3	4	5	6
18/09/10 to 16/09/11	97.76	95.47	95.59	96.91	96.47	97.93	97.67	98.21	97.53	98.26	97.68	97.51	98.49
19/09/09 to 17/09/10	94.92	92.12	87.16	95.75	97.79	98.06	96.16	99.01	98.40	99.16	98.69	99.58	98.46
Min Standard	98.00	98.00	98.00	98.00	98.00	98.00	98.00	98.00	98.00	98.00	98.00	98.00	98.00

Kilometre figures are based on 4 weeks data