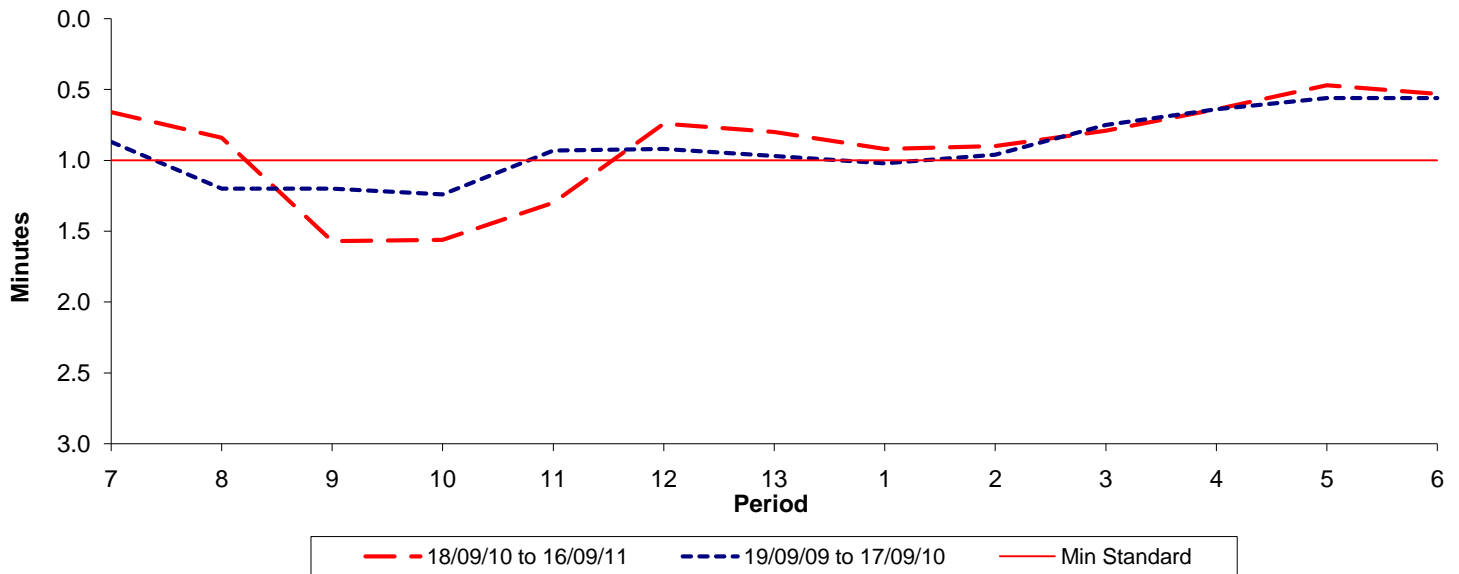




Reliability Performance (High Frequency)

Excess Waiting Time (minutes)

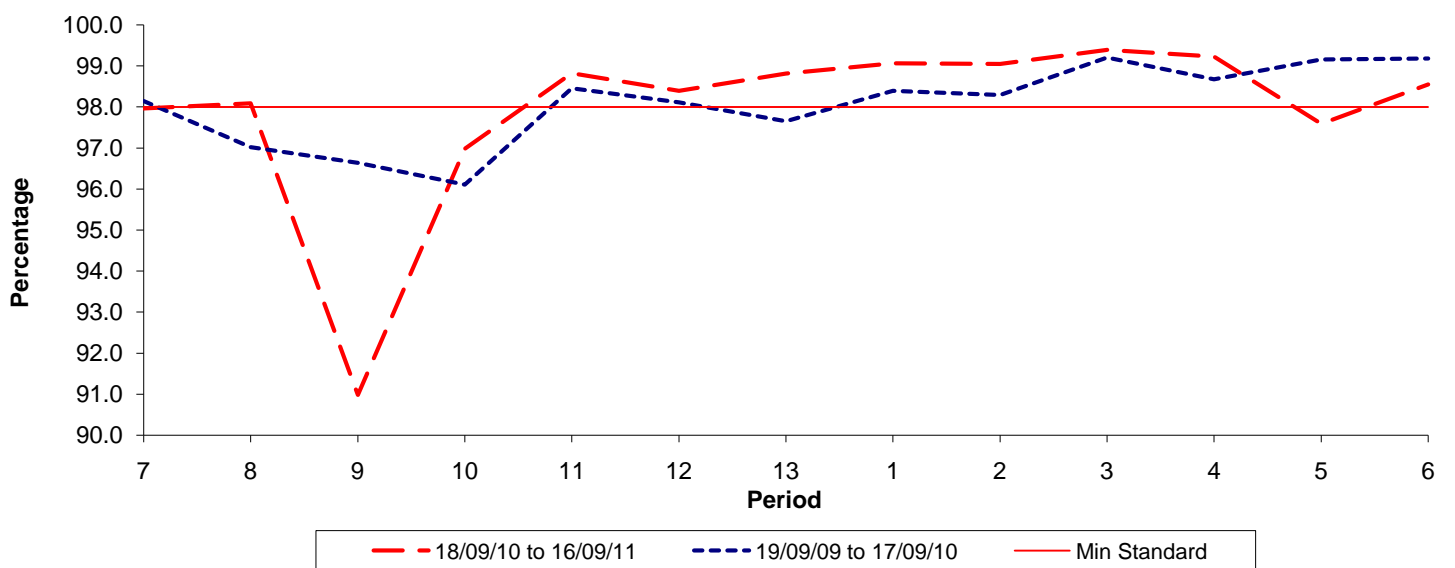


Date Range / Period	7	8	9	10	11	12	13	1	2	3	4	5	6
18/09/10 to 16/09/11	0.66	0.84	1.57	1.56	1.30	0.74	0.80	0.92	0.90	0.79	0.64	0.47	0.53
19/09/09 to 17/09/10	0.87	1.20	1.20	1.24	0.93	0.92	0.97	1.02	0.96	0.75	0.64	0.56	0.56
Min Standard	1.00	1.00	1.00	1.00	1.00	1.00	1.00	1.00	1.00	1.00	1.00	1.00	1.00

Excess Waiting Time figures are based on 12 weeks data

Kilometre Performance

% Kilometres Operated



Date Range / Period	7	8	9	10	11	12	13	1	2	3	4	5	6
18/09/10 to 16/09/11	97.96	98.09	90.98	96.98	98.82	98.39	98.81	99.06	99.05	99.39	99.23	97.59	98.55
19/09/09 to 17/09/10	98.15	97.02	96.64	96.11	98.45	98.11	97.66	98.39	98.29	99.21	98.68	99.16	99.19
Min Standard	98.00	98.00	98.00	98.00	98.00	98.00	98.00	98.00	98.00	98.00	98.00	98.00	98.00

Kilometre figures are based on 4 weeks data