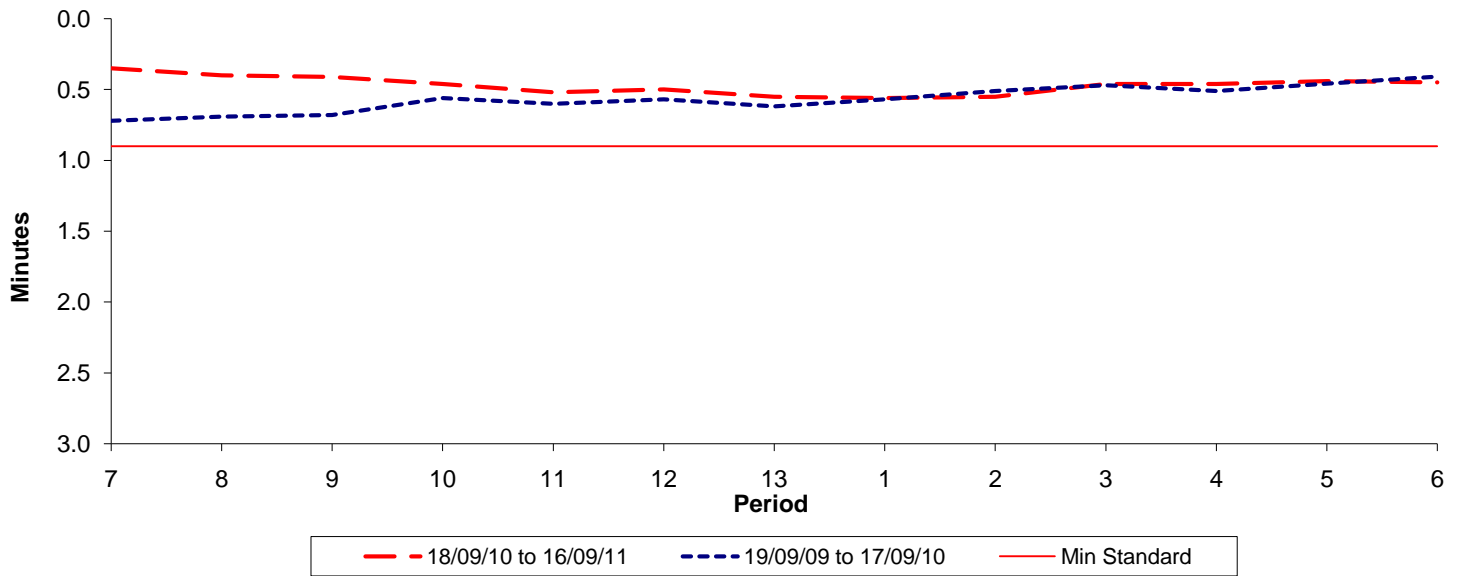




**Reliability Performance ( High Frequency )**

Excess Waiting Time (minutes)

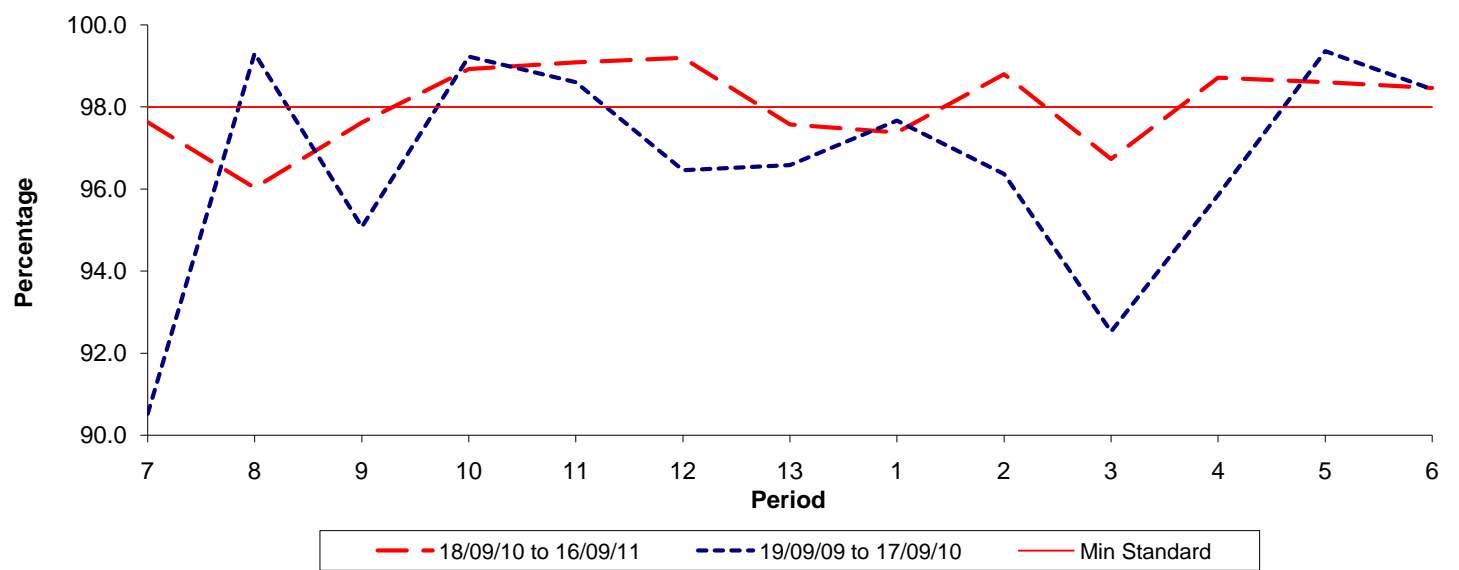


Date Range / Period	7	8	9	10	11	12	13	1	2	3	4	5	6
18/09/10 to 16/09/11	0.35	0.40	0.41	0.46	0.52	0.50	0.55	0.56	0.55	0.46	0.46	0.44	0.45
19/09/09 to 17/09/10	0.72	0.69	0.68	0.56	0.60	0.57	0.62	0.57	0.51	0.47	0.51	0.46	0.41
Min Standard	0.90	0.90	0.90	0.90	0.90	0.90	0.90	0.90	0.90	0.90	0.90	0.90	0.90

Excess Waiting Time figures are based on 12 weeks data

**Kilometre Performance**

% Kilometres Operated



Date Range / Period	7	8	9	10	11	12	13	1	2	3	4	5	6
18/09/10 to 16/09/11	97.63	96.03	97.62	98.92	99.09	99.19	97.57	97.38	98.80	96.73	98.71	98.60	98.46
19/09/09 to 17/09/10	90.52	99.31	95.08	99.23	98.61	96.46	96.58	97.67	96.37	92.53	95.85	99.36	98.43
Min Standard	98.00	98.00	98.00	98.00	98.00	98.00	98.00	98.00	98.00	98.00	98.00	98.00	98.00

Kilometre figures are based on 4 weeks data