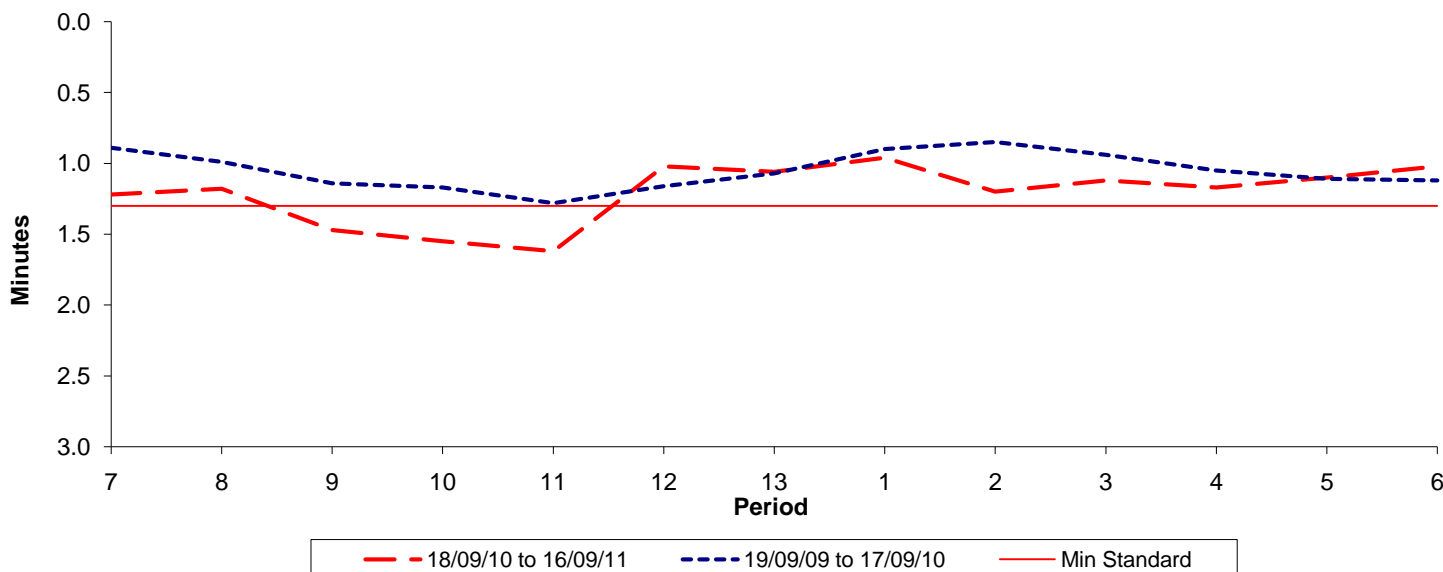




Reliability Performance (High Frequency)

Excess Waiting Time (minutes)

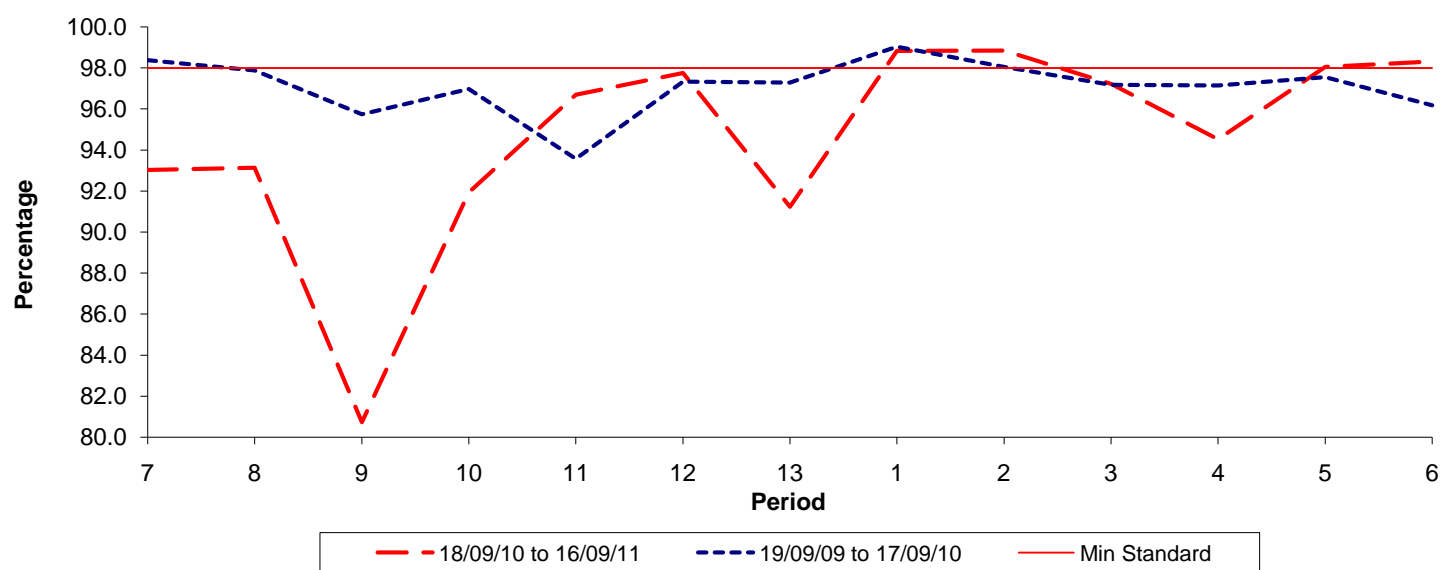


Date Range / Period	7	8	9	10	11	12	13	1	2	3	4	5	6
18/09/10 to 16/09/11	1.22	1.18	1.47	1.55	1.62	1.02	1.06	0.96	1.20	1.12	1.17	1.10	1.02
19/09/09 to 17/09/10	0.89	0.99	1.14	1.17	1.28	1.16	1.07	0.90	0.85	0.94	1.05	1.11	1.12
Min Standard	1.30	1.30	1.30	1.30	1.30	1.30	1.30	1.30	1.30	1.30	1.30	1.30	1.30

Excess Waiting Time figures are based on 12 weeks data

Kilometre Performance

% Kilometres Operated



Date Range / Period	7	8	9	10	11	12	13	1	2	3	4	5	6
18/09/10 to 16/09/11	93.03	93.13	80.72	91.93	96.70	97.76	91.23	98.83	98.85	97.23	94.52	98.05	98.32
19/09/09 to 17/09/10	98.37	97.87	95.74	96.97	93.57	97.33	97.28	99.03	98.04	97.18	97.14	97.55	96.17
Min Standard	98.00	98.00	98.00	98.00	98.00	98.00	98.00	98.00	98.00	98.00	98.00	98.00	98.00

Kilometre figures are based on 4 weeks data