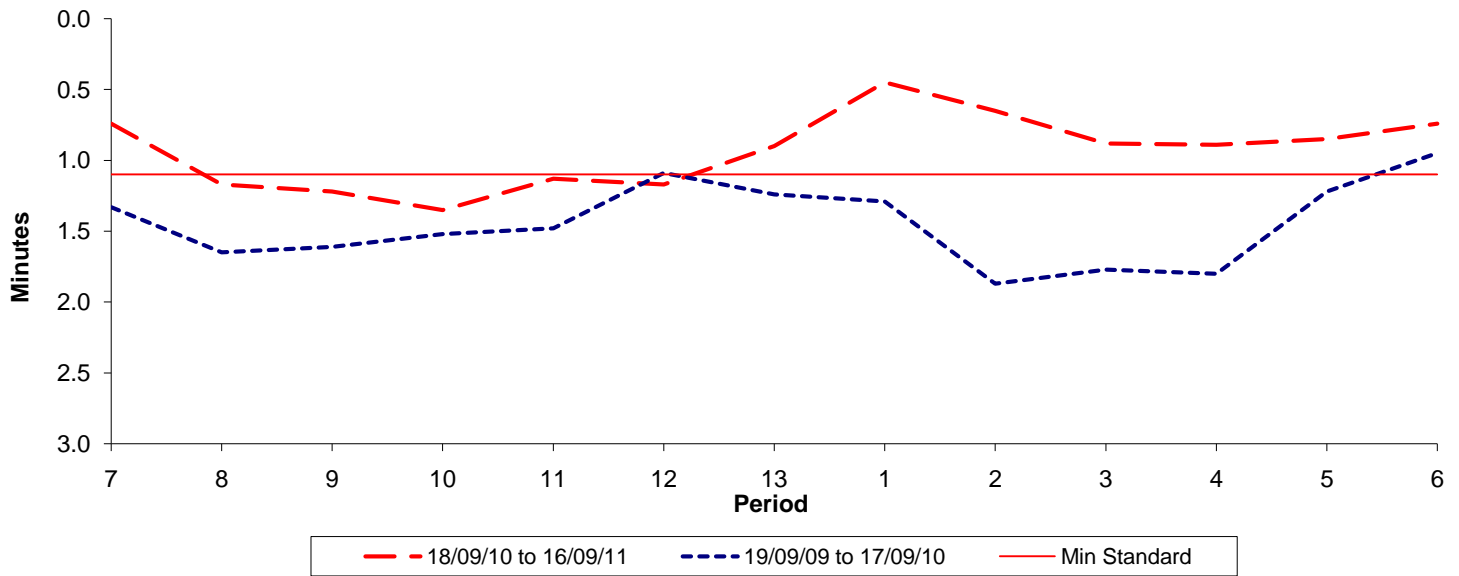




**Reliability Performance ( High Frequency )**

**Excess Waiting Time (minutes)**

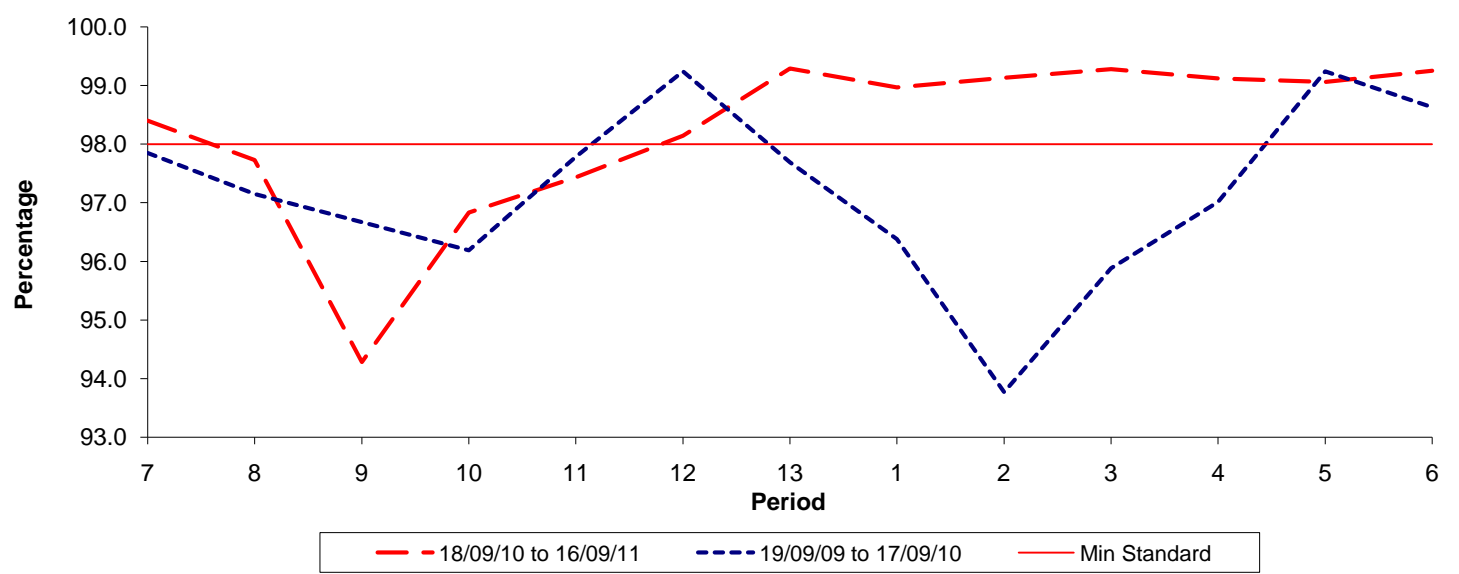


Date Range / Period	7	8	9	10	11	12	13	1	2	3	4	5	6
18/09/10 to 16/09/11	0.74	1.17	1.22	1.35	1.13	1.17	0.90	0.45	0.65	0.88	0.89	0.85	0.74
19/09/09 to 17/09/10	1.33	1.65	1.61	1.52	1.48	1.09	1.24	1.29	1.87	1.77	1.80	1.22	0.95
Min Standard	1.10	1.10	1.10	1.10	1.10	1.10	1.10	1.10	1.10	1.10	1.10	1.10	1.10

Excess Waiting Time figures are based on 12 weeks data

**Kilometre Performance**

**% Kilometres Operated**



Date Range / Period	7	8	9	10	11	12	13	1	2	3	4	5	6
18/09/10 to 16/09/11	98.40	97.73	94.28	96.83	97.43	98.14	99.29	98.97	99.13	99.28	99.12	99.06	99.25
19/09/09 to 17/09/10	97.85	97.15	96.67	96.19	97.78	99.24	97.69	96.38	93.77	95.88	97.01	99.24	98.63
Min Standard	98.00	98.00	98.00	98.00	98.00	98.00	98.00	98.00	98.00	98.00	98.00	98.00	98.00

Kilometre figures are based on 4 weeks data