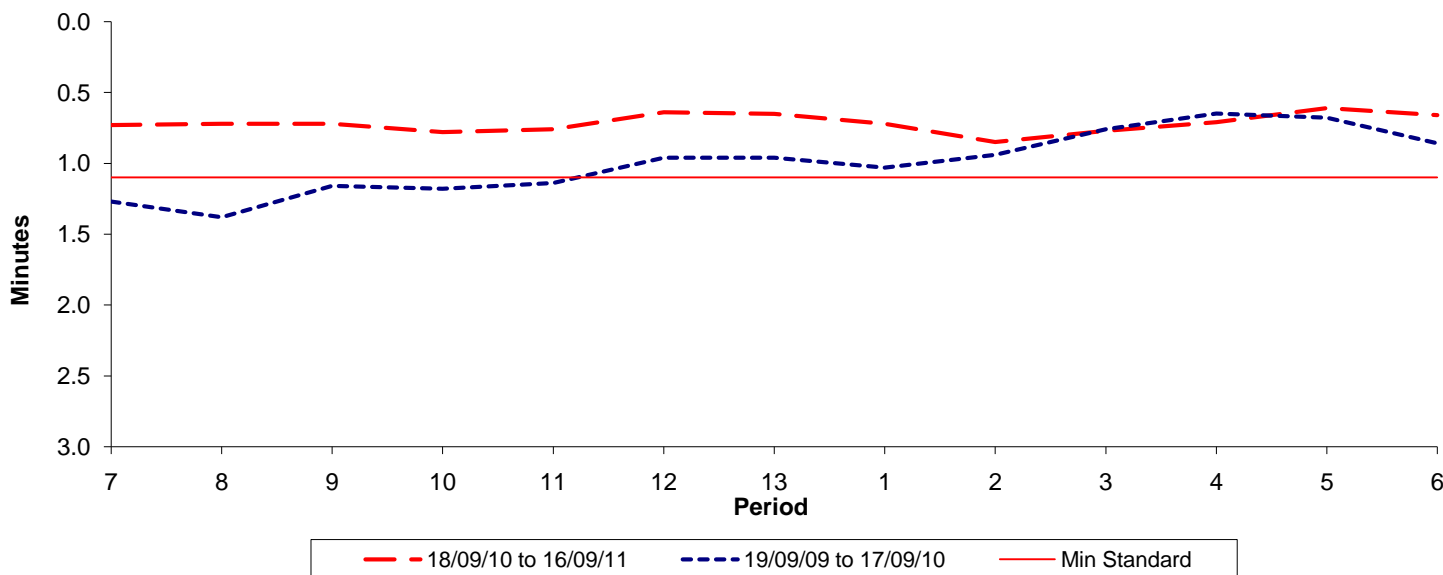




Reliability Performance (High Frequency)

Excess Waiting Time (minutes)

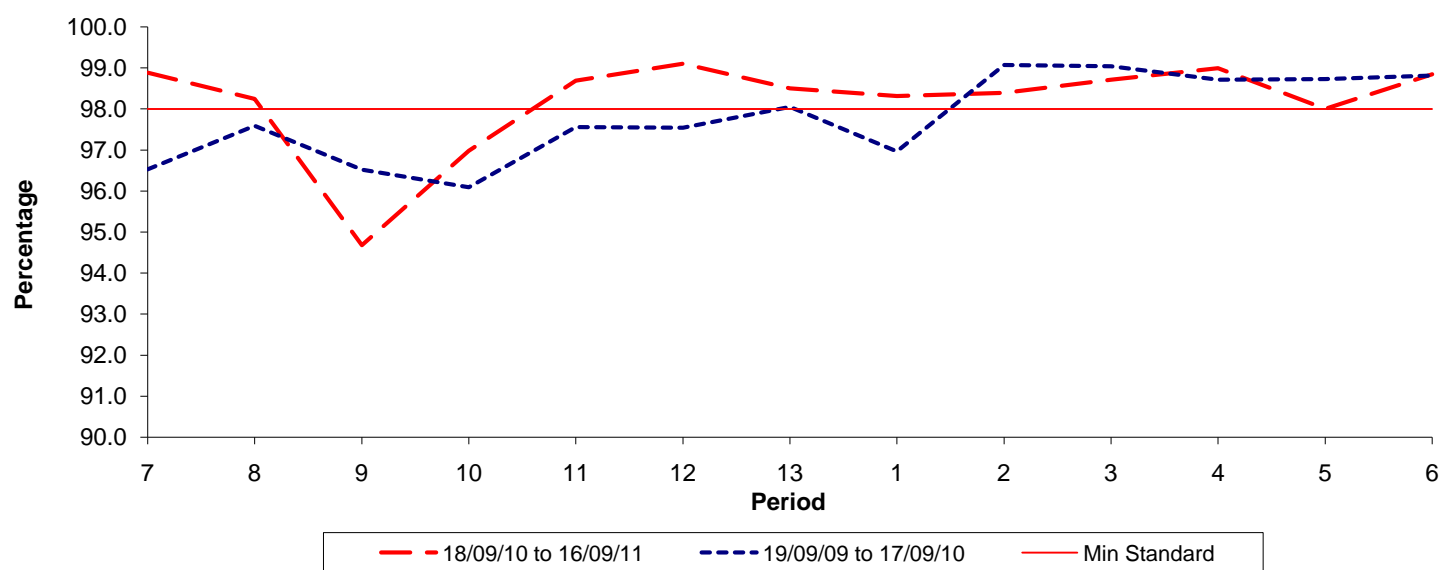


Date Range / Period	7	8	9	10	11	12	13	1	2	3	4	5	6
18/09/10 to 16/09/11	0.73	0.72	0.72	0.78	0.76	0.64	0.65	0.72	0.85	0.77	0.71	0.61	0.66
19/09/09 to 17/09/10	1.27	1.38	1.16	1.18	1.14	0.96	0.96	1.03	0.94	0.76	0.65	0.68	0.86
Min Standard	1.10	1.10	1.10	1.10	1.10	1.10	1.10	1.10	1.10	1.10	1.10	1.10	1.10

Excess Waiting Time figures are based on 12 weeks data

Kilometre Performance

% Kilometres Operated



Date Range / Period	7	8	9	10	11	12	13	1	2	3	4	5	6
18/09/10 to 16/09/11	98.88	98.24	94.68	96.98	98.69	99.10	98.50	98.31	98.39	98.71	98.99	98.00	98.84
19/09/09 to 17/09/10	96.53	97.59	96.52	96.09	97.56	97.54	98.05	96.96	99.07	99.04	98.71	98.73	98.81
Min Standard	98.00	98.00	98.00	98.00	98.00	98.00	98.00	98.00	98.00	98.00	98.00	98.00	98.00

Kilometre figures are based on 4 weeks data