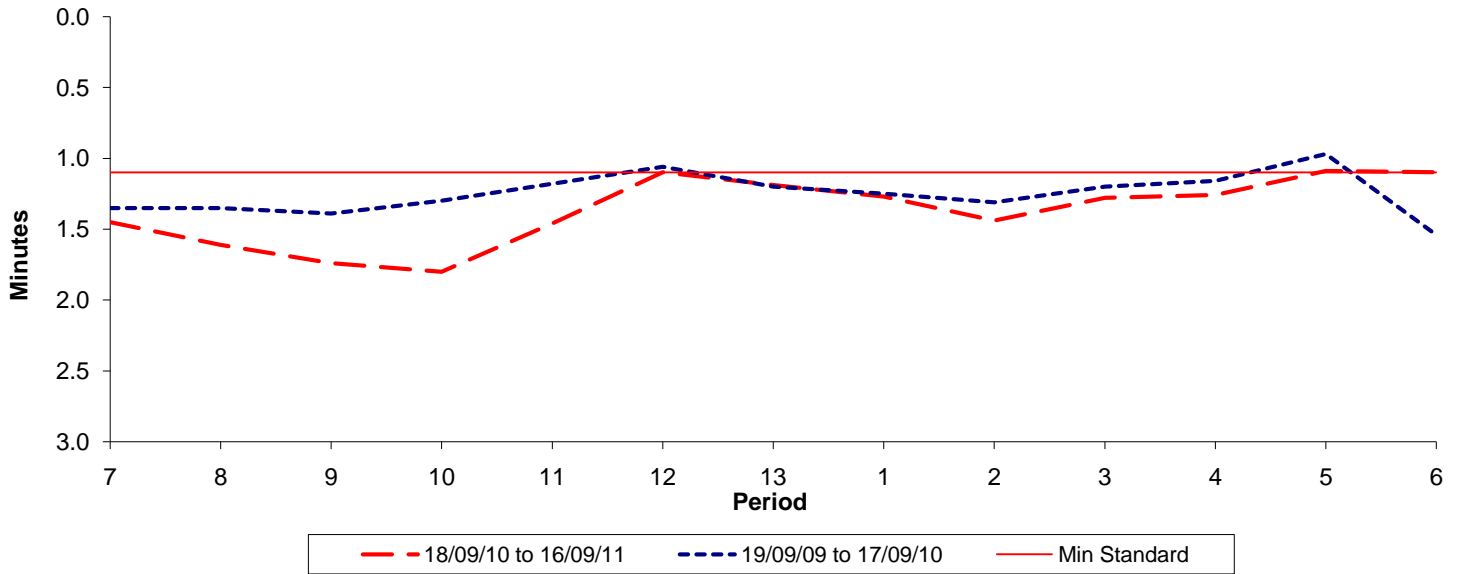




Reliability Performance (High Frequency)

Excess Waiting Time (minutes)

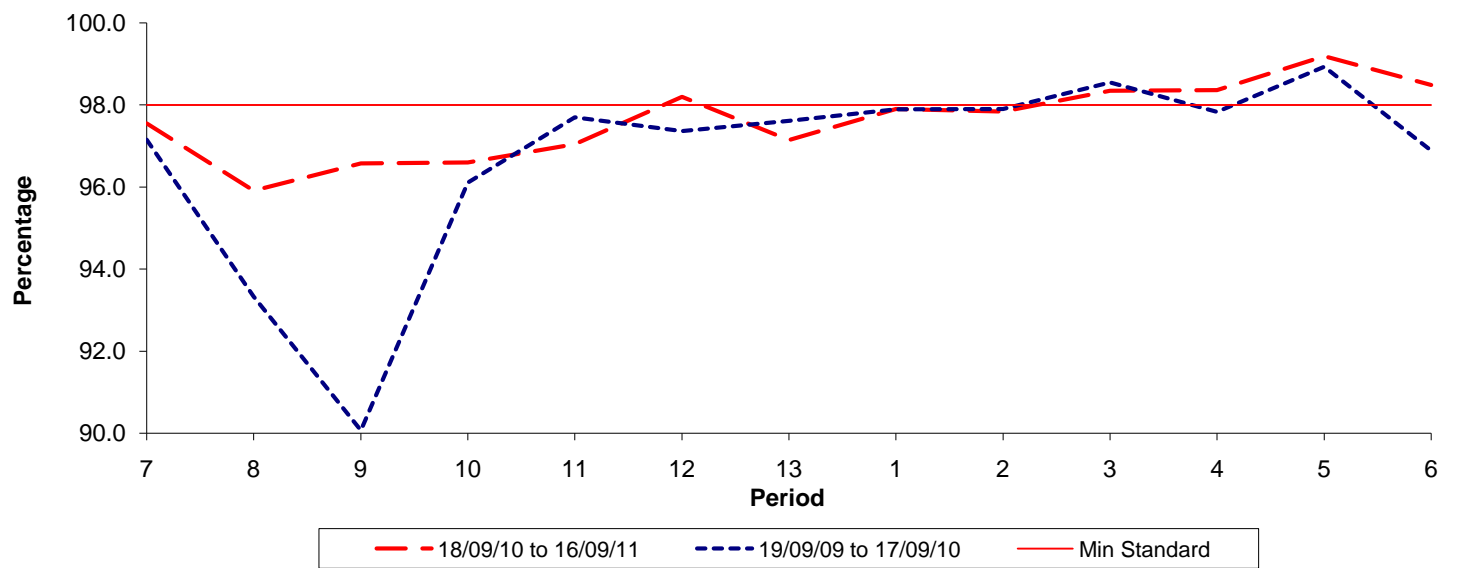


Date Range / Period	7	8	9	10	11	12	13	1	2	3	4	5	6
18/09/10 to 16/09/11	1.45	1.61	1.74	1.80	1.46	1.10	1.19	1.27	1.44	1.28	1.26	1.09	1.10
19/09/09 to 17/09/10	1.35	1.35	1.39	1.30	1.18	1.06	1.20	1.25	1.31	1.20	1.16	0.97	1.54
Min Standard	1.10	1.10	1.10	1.10	1.10	1.10	1.10	1.10	1.10	1.10	1.10	1.10	1.10

Excess Waiting Time figures are based on 12 weeks data

Kilometre Performance

% Kilometres Operated



Date Range / Period	7	8	9	10	11	12	13	1	2	3	4	5	6
18/09/10 to 16/09/11	97.55	95.91	96.57	96.60	97.04	98.20	97.14	97.90	97.84	98.35	98.36	99.19	98.49
19/09/09 to 17/09/10	97.15	93.33	90.07	96.11	97.70	97.36	97.61	97.89	97.90	98.55	97.83	98.93	96.89
Min Standard	98.00	98.00	98.00	98.00	98.00	98.00	98.00	98.00	98.00	98.00	98.00	98.00	98.00

Kilometre figures are based on 4 weeks data