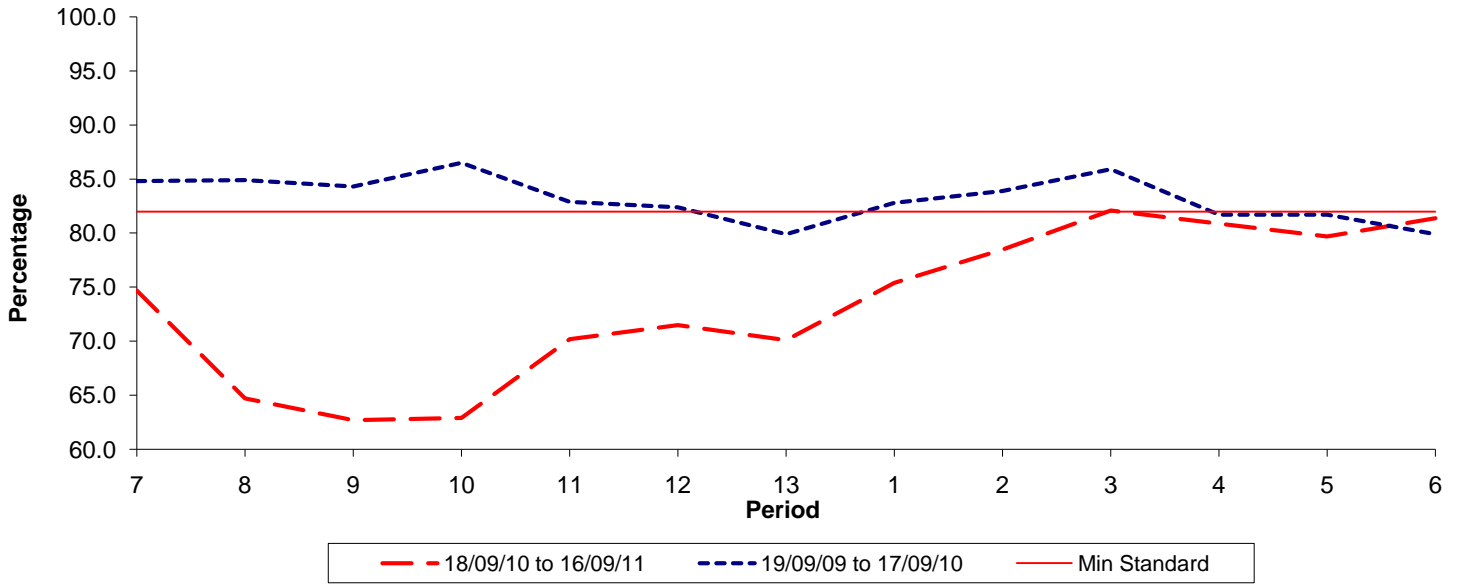




**Reliability Performance ( Low Frequency )**

**% Departing On Time**

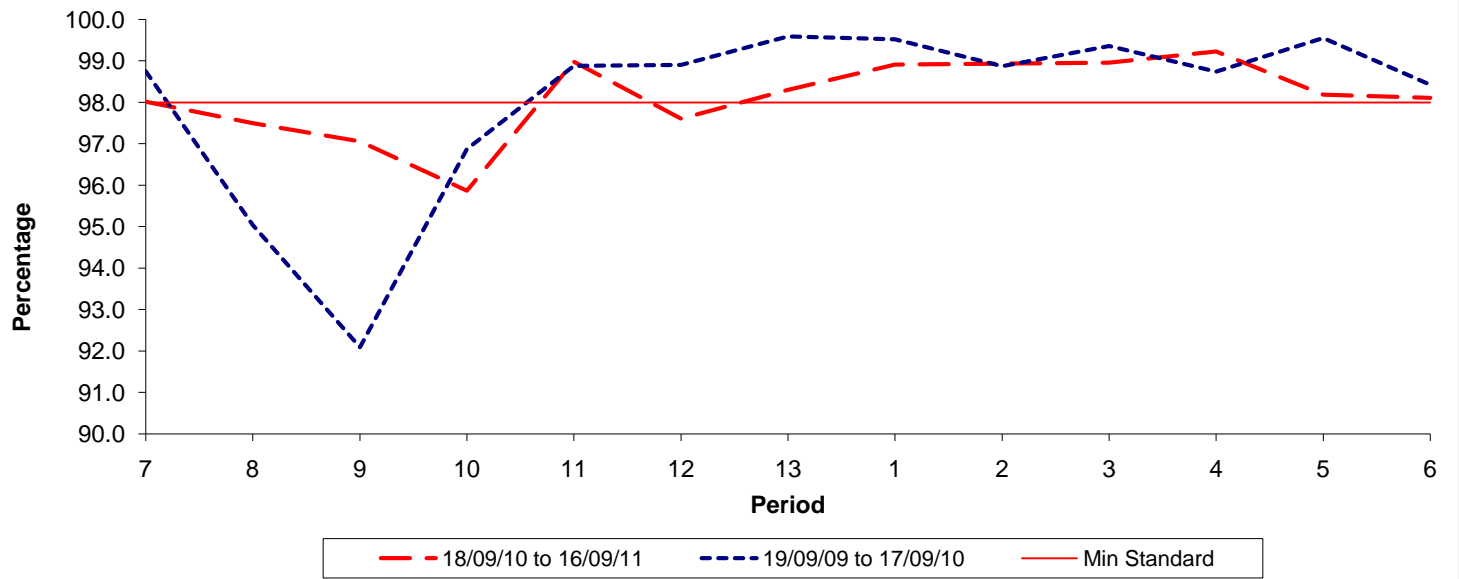


Date Range / Period	7	8	9	10	11	12	13	1	2	3	4	5	6
18/09/10 to 16/09/11	74.70	64.70	62.70	62.90	70.20	71.50	70.10	75.40	78.50	82.10	80.90	79.70	81.40
19/09/09 to 17/09/10	84.80	84.90	84.30	86.50	82.90	82.40	79.90	82.80	83.90	85.90	81.70	81.70	79.90
Min Standard	82.00	82.00	82.00	82.00	82.00	82.00	82.00	82.00	82.00	82.00	82.00	82.00	82.00

On Time figures are based on 12 weeks data

**Kilometre Performance**

**% Kilometres Operated**



Date Range / Period	7	8	9	10	11	12	13	1	2	3	4	5	6
18/09/10 to 16/09/11	98.02	97.50	97.06	95.87	98.98	97.61	98.30	98.91	98.94	98.96	99.23	98.19	98.11
19/09/09 to 17/09/10	98.75	95.04	92.09	96.87	98.88	98.90	99.59	99.52	98.87	99.36	98.74	99.55	98.42
Min Standard	98.00	98.00	98.00	98.00	98.00	98.00	98.00	98.00	98.00	98.00	98.00	98.00	98.00

Kilometre figures are based on 4 weeks data