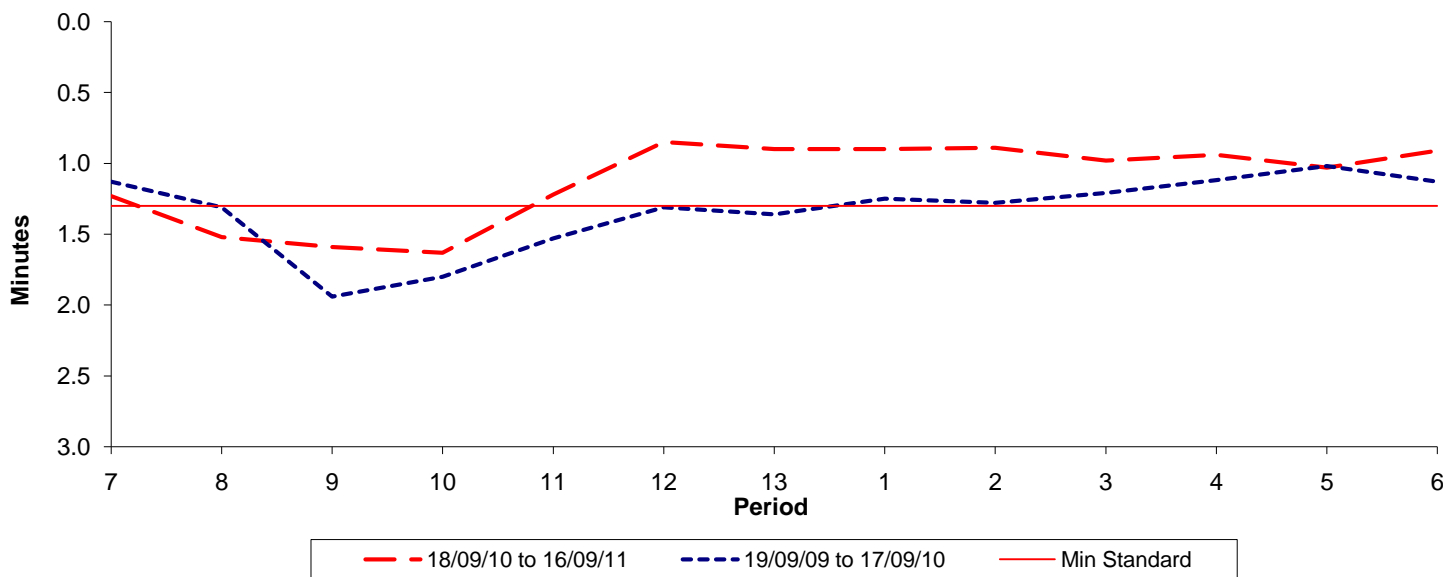




Reliability Performance (High Frequency)

Excess Waiting Time (minutes)

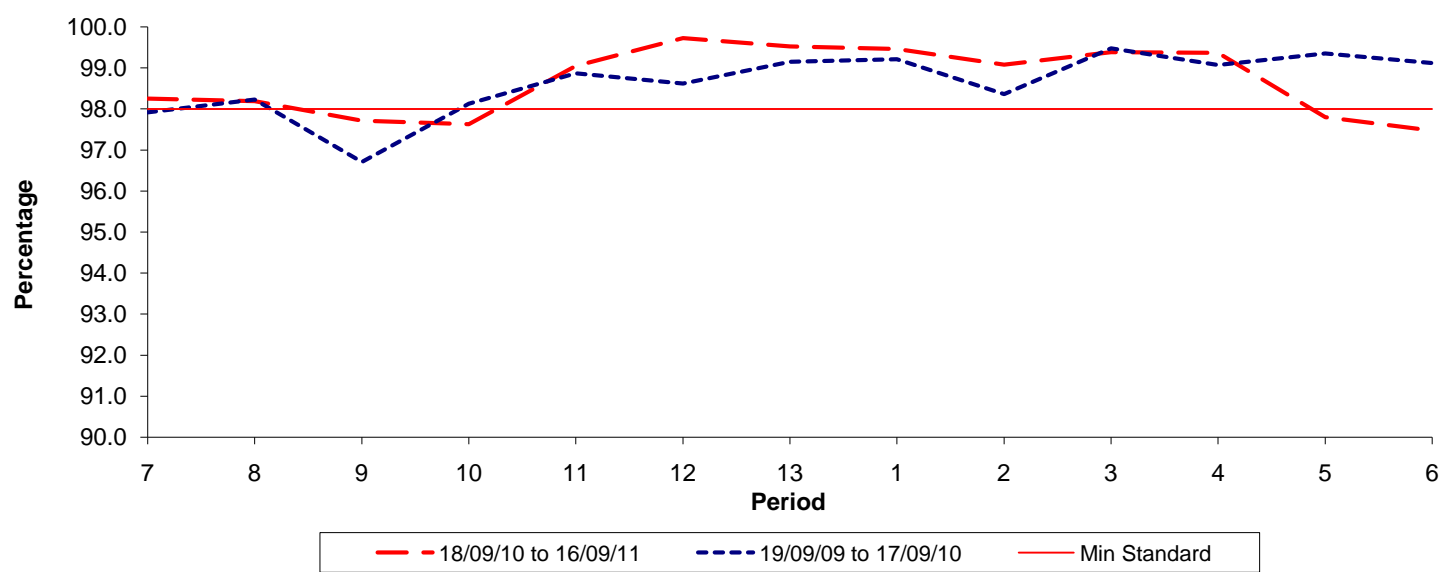


Date Range / Period	7	8	9	10	11	12	13	1	2	3	4	5	6
18/09/10 to 16/09/11	1.23	1.52	1.59	1.63	1.22	0.85	0.90	0.90	0.89	0.98	0.94	1.03	0.91
19/09/09 to 17/09/10	1.13	1.31	1.94	1.80	1.53	1.31	1.36	1.25	1.28	1.21	1.12	1.02	1.13
Min Standard	1.30	1.30	1.30	1.30	1.30	1.30	1.30	1.30	1.30	1.30	1.30	1.30	1.30

Excess Waiting Time figures are based on 12 weeks data

Kilometre Performance

% Kilometres Operated



Date Range / Period	7	8	9	10	11	12	13	1	2	3	4	5	6
18/09/10 to 16/09/11	98.25	98.19	97.71	97.63	99.04	99.73	99.52	99.46	99.08	99.38	99.37	97.80	97.47
19/09/09 to 17/09/10	97.92	98.23	96.71	98.13	98.87	98.62	99.15	99.21	98.37	99.48	99.07	99.35	99.12
Min Standard	98.00	98.00	98.00	98.00	98.00	98.00	98.00	98.00	98.00	98.00	98.00	98.00	98.00

Kilometre figures are based on 4 weeks data