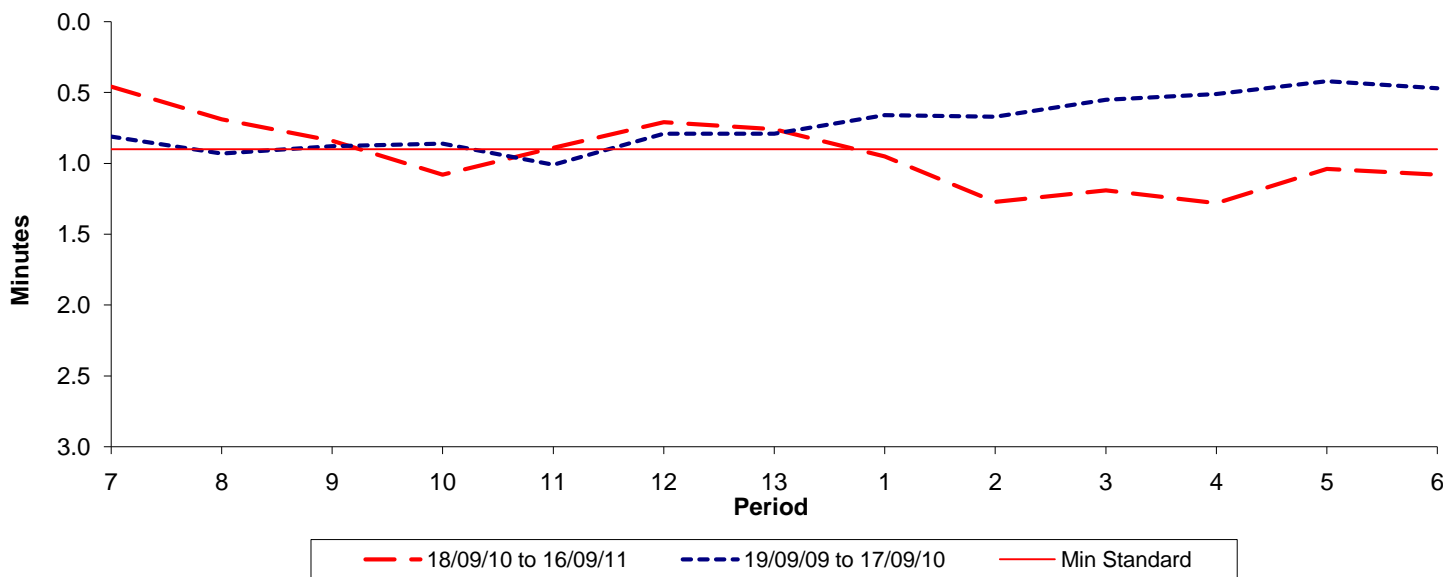




**Reliability Performance ( High Frequency )**

**Excess Waiting Time (minutes)**

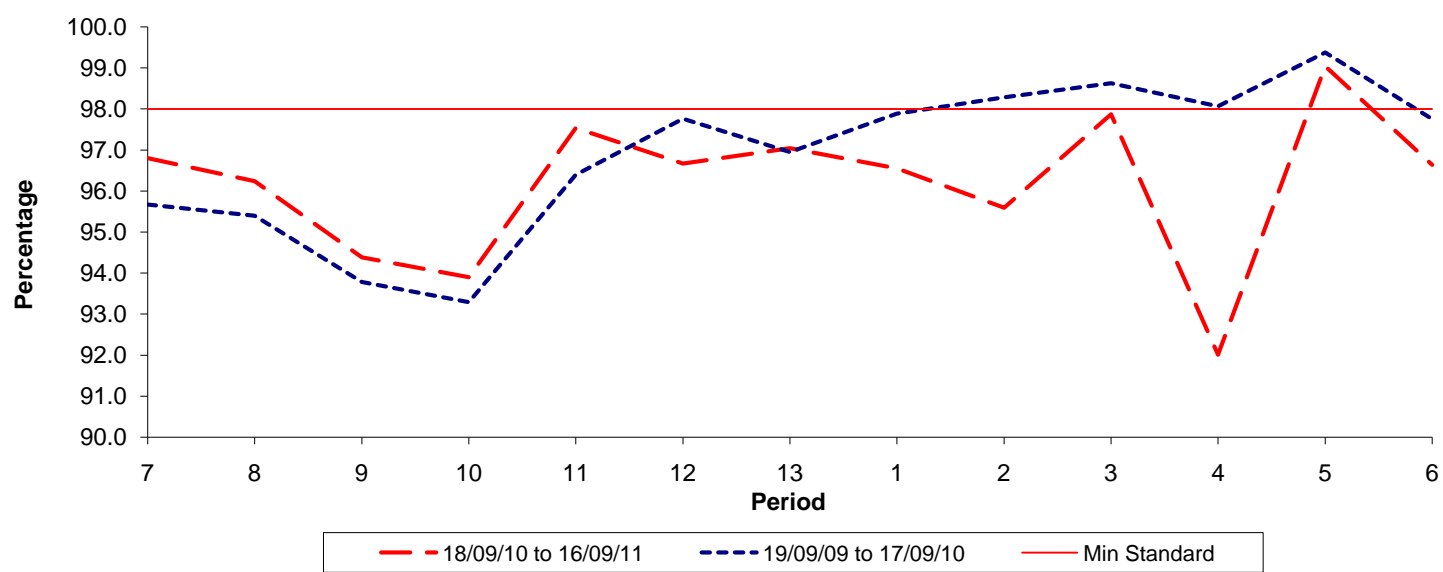


Date Range / Period	7	8	9	10	11	12	13	1	2	3	4	5	6
18/09/10 to 16/09/11	0.46	0.69	0.84	1.08	0.89	0.71	0.76	0.95	1.27	1.19	1.28	1.04	1.08
19/09/09 to 17/09/10	0.81	0.93	0.88	0.86	1.01	0.79	0.79	0.66	0.67	0.55	0.51	0.42	0.47
Min Standard	0.90	0.90	0.90	0.90	0.90	0.90	0.90	0.90	0.90	0.90	0.90	0.90	0.90

Excess Waiting Time figures are based on 12 weeks data

**Kilometre Performance**

**% Kilometres Operated**



Date Range / Period	7	8	9	10	11	12	13	1	2	3	4	5	6
18/09/10 to 16/09/11	96.80	96.24	94.38	93.90	97.54	96.67	97.04	96.55	95.59	97.87	92.01	99.04	96.64
19/09/09 to 17/09/10	95.67	95.39	93.78	93.29	96.39	97.76	96.95	97.88	98.28	98.62	98.06	99.37	97.75
Min Standard	98.00	98.00	98.00	98.00	98.00	98.00	98.00	98.00	98.00	98.00	98.00	98.00	98.00

Kilometre figures are based on 4 weeks data