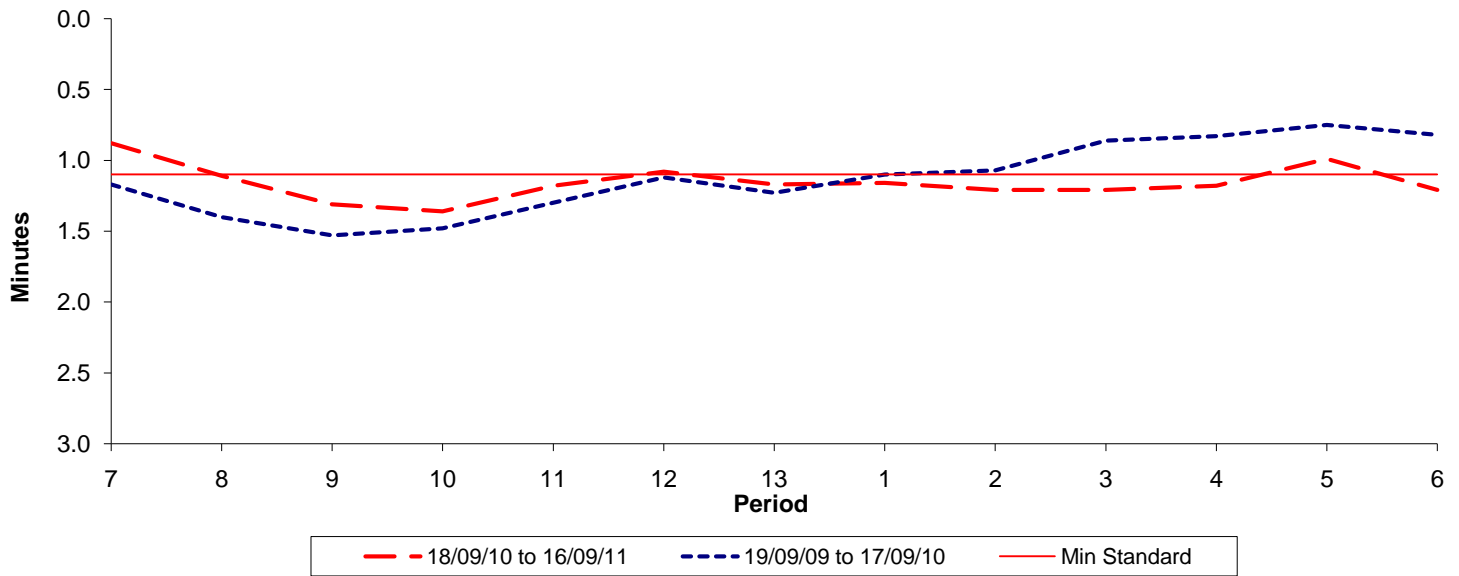




Reliability Performance (High Frequency)

Excess Waiting Time (minutes)

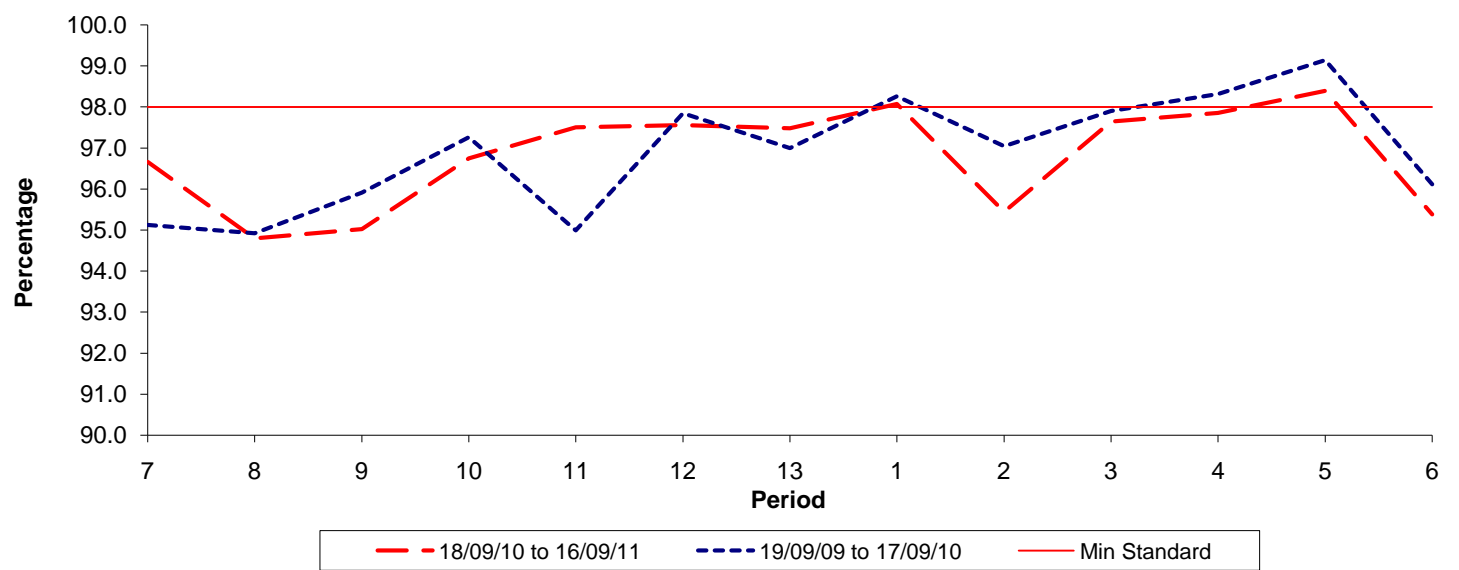


Date Range / Period	7	8	9	10	11	12	13	1	2	3	4	5	6
18/09/10 to 16/09/11	0.88	1.11	1.31	1.36	1.18	1.08	1.17	1.16	1.21	1.21	1.18	0.99	1.21
19/09/09 to 17/09/10	1.17	1.40	1.53	1.48	1.30	1.12	1.23	1.10	1.07	0.86	0.83	0.75	0.82
Min Standard	1.10	1.10	1.10	1.10	1.10	1.10	1.10	1.10	1.10	1.10	1.10	1.10	1.10

Excess Waiting Time figures are based on 12 weeks data

Kilometre Performance

% Kilometres Operated



Date Range / Period	7	8	9	10	11	12	13	1	2	3	4	5	6
18/09/10 to 16/09/11	96.66	94.79	95.02	96.75	97.50	97.55	97.48	98.07	95.44	97.64	97.85	98.39	95.38
19/09/09 to 17/09/10	95.12	94.92	95.91	97.26	94.99	97.85	96.99	98.26	97.04	97.90	98.31	99.14	96.12
Min Standard	98.00	98.00	98.00	98.00	98.00	98.00	98.00	98.00	98.00	98.00	98.00	98.00	98.00

Kilometre figures are based on 4 weeks data