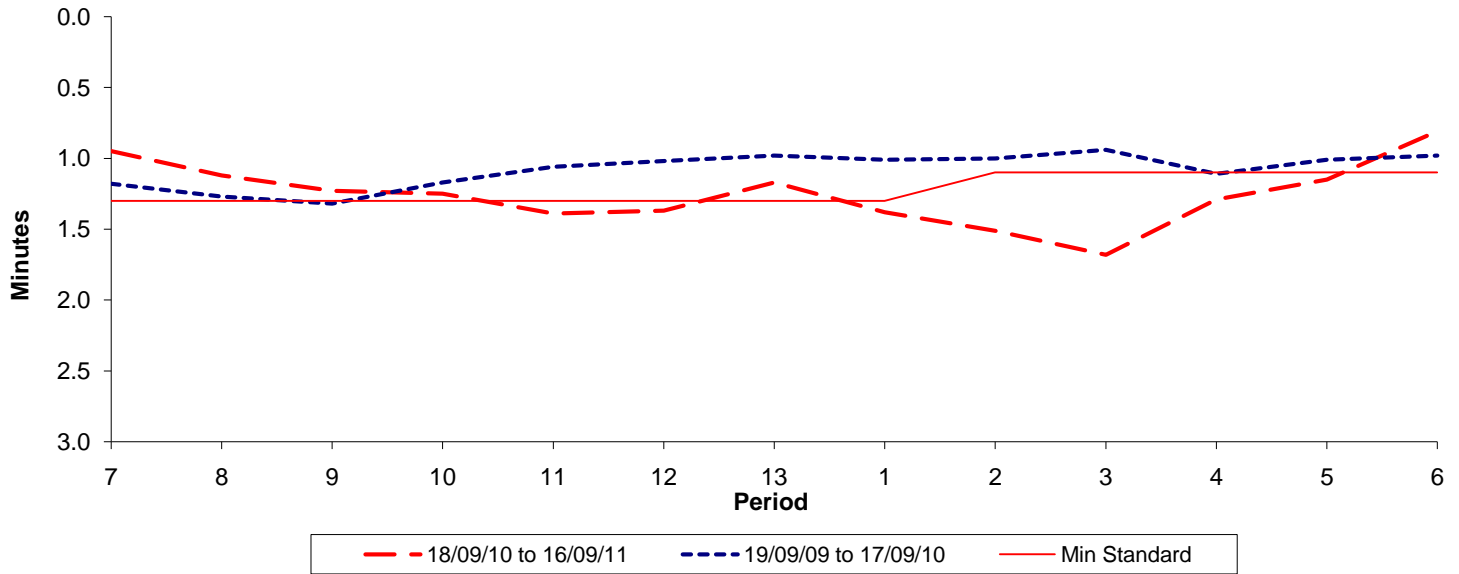




Reliability Performance (High Frequency)

Excess Waiting Time (minutes)

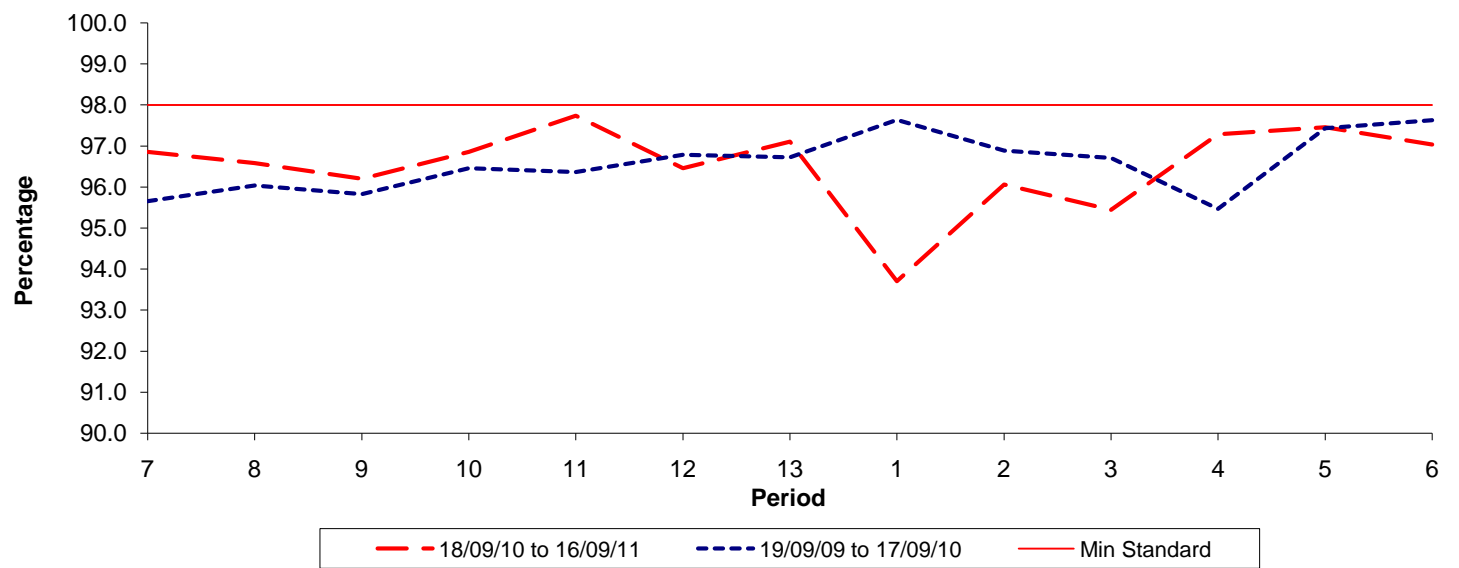


Date Range / Period	7	8	9	10	11	12	13	1	2	3	4	5	6
18/09/10 to 16/09/11	0.95	1.12	1.23	1.25	1.39	1.37	1.17	1.38	1.51	1.68	1.29	1.15	0.81
19/09/09 to 17/09/10	1.18	1.27	1.32	1.17	1.06	1.02	0.98	1.01	1.00	0.94	1.11	1.01	0.98
Min Standard	1.30	1.30	1.30	1.30	1.30	1.30	1.30	1.30	1.10	1.10	1.10	1.10	1.10

Excess Waiting Time figures are based on 12 weeks data

Kilometre Performance

% Kilometres Operated



Date Range / Period	7	8	9	10	11	12	13	1	2	3	4	5	6
18/09/10 to 16/09/11	96.86	96.58	96.20	96.86	97.74	96.46	97.11	93.70	96.06	95.44	97.29	97.46	97.04
19/09/09 to 17/09/10	95.66	96.04	95.83	96.46	96.37	96.79	96.73	97.64	96.89	96.71	95.47	97.44	97.63
Min Standard	98.00	98.00	98.00	98.00	98.00	98.00	98.00	98.00	98.00	98.00	98.00	98.00	98.00

Kilometre figures are based on 4 weeks data