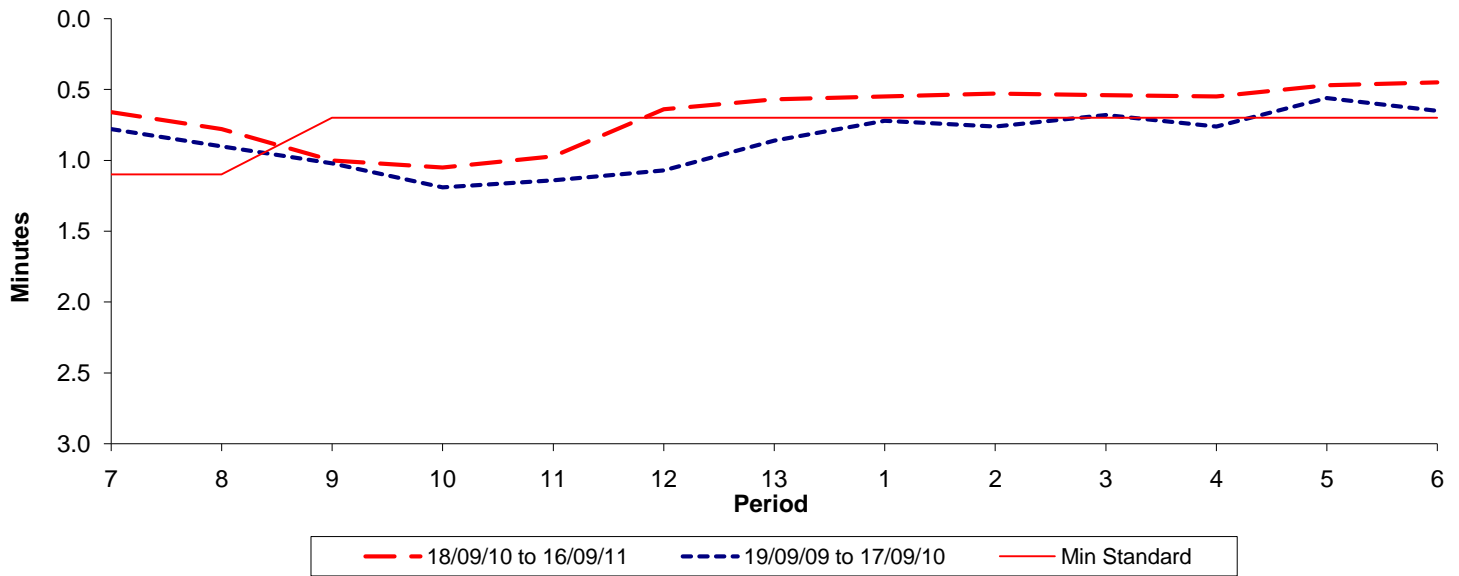




Reliability Performance (High Frequency)

Excess Waiting Time (minutes)

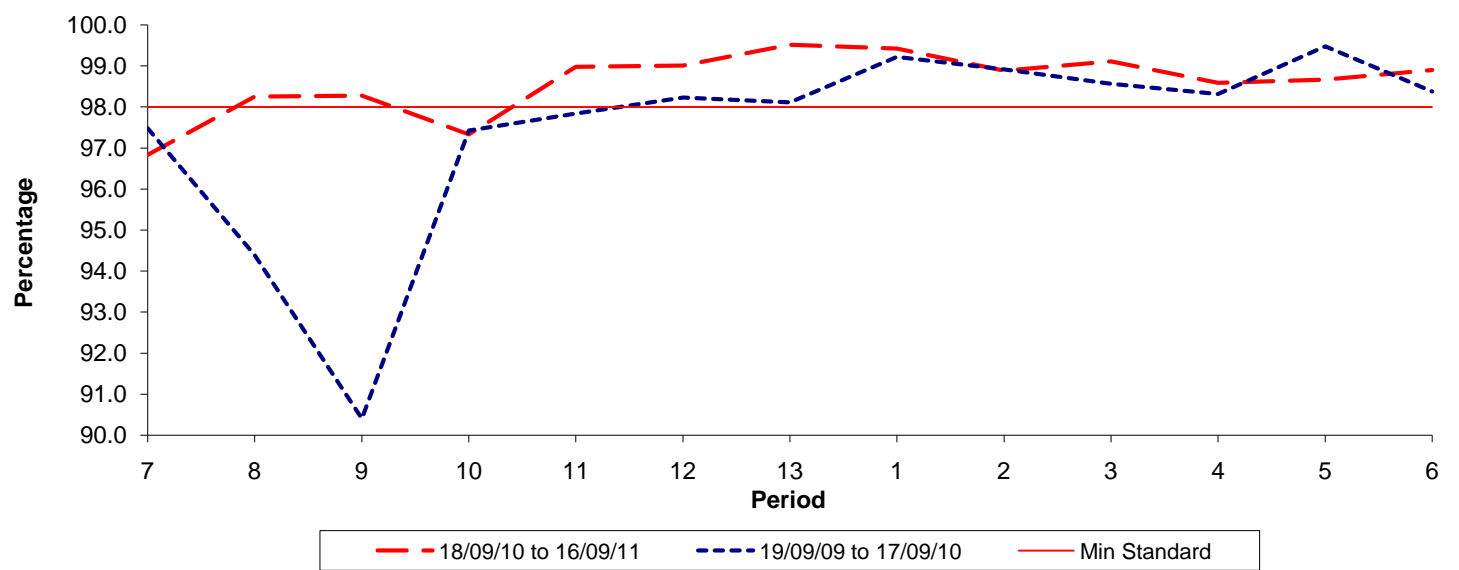


Date Range / Period	7	8	9	10	11	12	13	1	2	3	4	5	6
18/09/10 to 16/09/11	0.66	0.78	1.00	1.05	0.97	0.64	0.57	0.55	0.53	0.54	0.55	0.47	0.45
19/09/09 to 17/09/10	0.78	0.90	1.02	1.19	1.14	1.07	0.86	0.72	0.76	0.68	0.76	0.56	0.65
Min Standard	1.10	1.10	0.70	0.70	0.70	0.70	0.70	0.70	0.70	0.70	0.70	0.70	0.70

Excess Waiting Time figures are based on 12 weeks data

Kilometre Performance

% Kilometres Operated



Date Range / Period	7	8	9	10	11	12	13	1	2	3	4	5	6
18/09/10 to 16/09/11	96.83	98.25	98.28	97.33	98.98	99.01	99.52	99.43	98.89	99.11	98.59	98.67	98.90
19/09/09 to 17/09/10	97.48	94.39	90.40	97.43	97.84	98.23	98.11	99.22	98.92	98.57	98.32	99.48	98.38
Min Standard	98.00	98.00	98.00	98.00	98.00	98.00	98.00	98.00	98.00	98.00	98.00	98.00	98.00

Kilometre figures are based on 4 weeks data