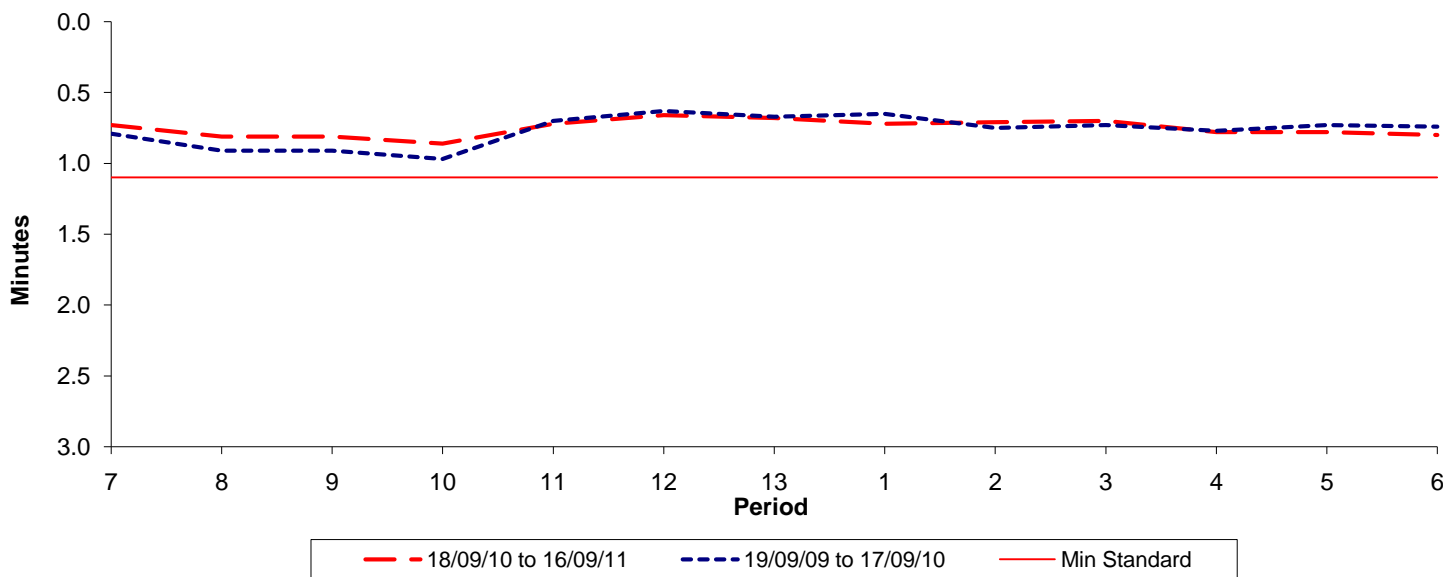




Reliability Performance (High Frequency)

Excess Waiting Time (minutes)

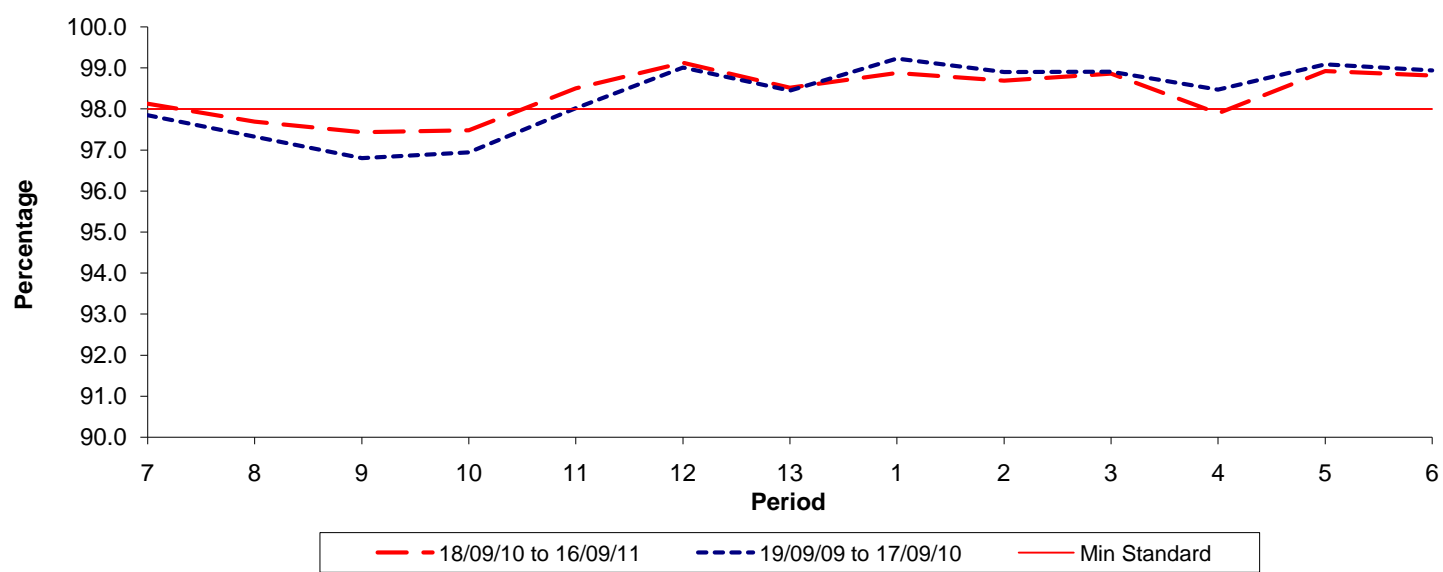


Date Range / Period	7	8	9	10	11	12	13	1	2	3	4	5	6
18/09/10 to 16/09/11	0.73	0.81	0.81	0.86	0.72	0.66	0.68	0.72	0.71	0.70	0.78	0.78	0.80
19/09/09 to 17/09/10	0.79	0.91	0.91	0.97	0.70	0.63	0.67	0.65	0.75	0.73	0.77	0.73	0.74
Min Standard	1.10	1.10	1.10	1.10	1.10	1.10	1.10	1.10	1.10	1.10	1.10	1.10	1.10

Excess Waiting Time figures are based on 12 weeks data

Kilometre Performance

% Kilometres Operated



Date Range / Period	7	8	9	10	11	12	13	1	2	3	4	5	6
18/09/10 to 16/09/11	98.13	97.69	97.43	97.48	98.50	99.13	98.52	98.88	98.69	98.86	97.89	98.93	98.82
19/09/09 to 17/09/10	97.85	97.32	96.80	96.94	98.02	99.01	98.45	99.23	98.90	98.91	98.47	99.09	98.94
Min Standard	98.00	98.00	98.00	98.00	98.00	98.00	98.00	98.00	98.00	98.00	98.00	98.00	98.00

Kilometre figures are based on 4 weeks data