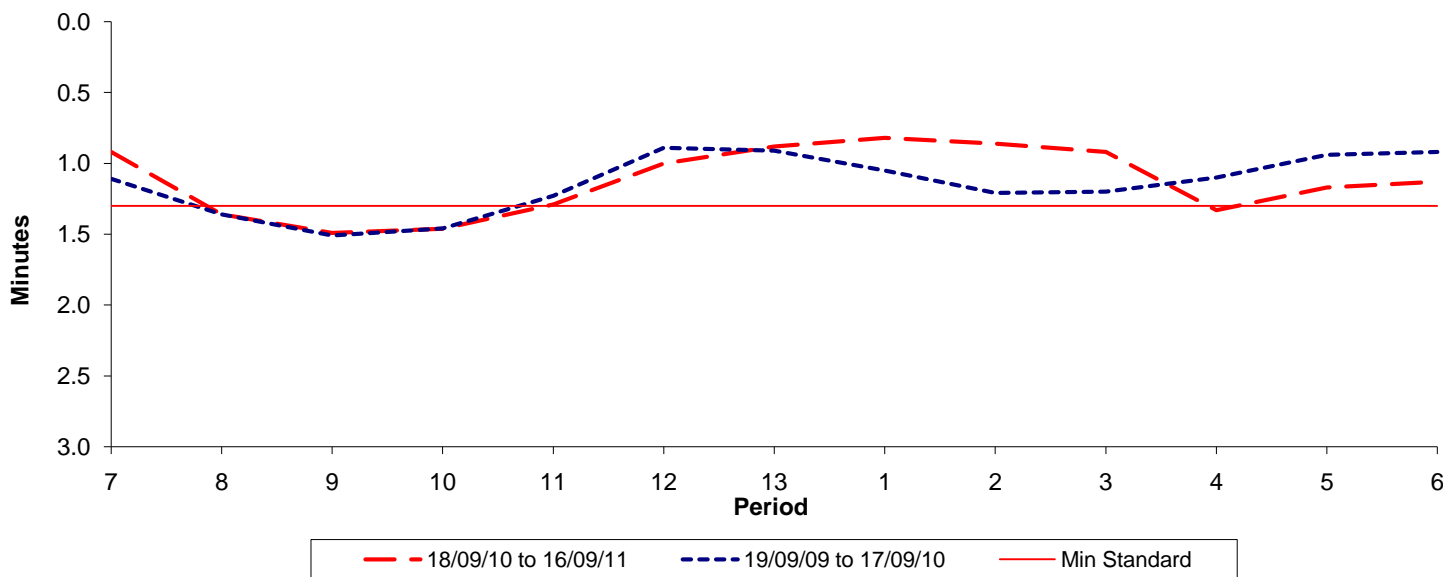




**Reliability Performance ( High Frequency )**

**Excess Waiting Time (minutes)**

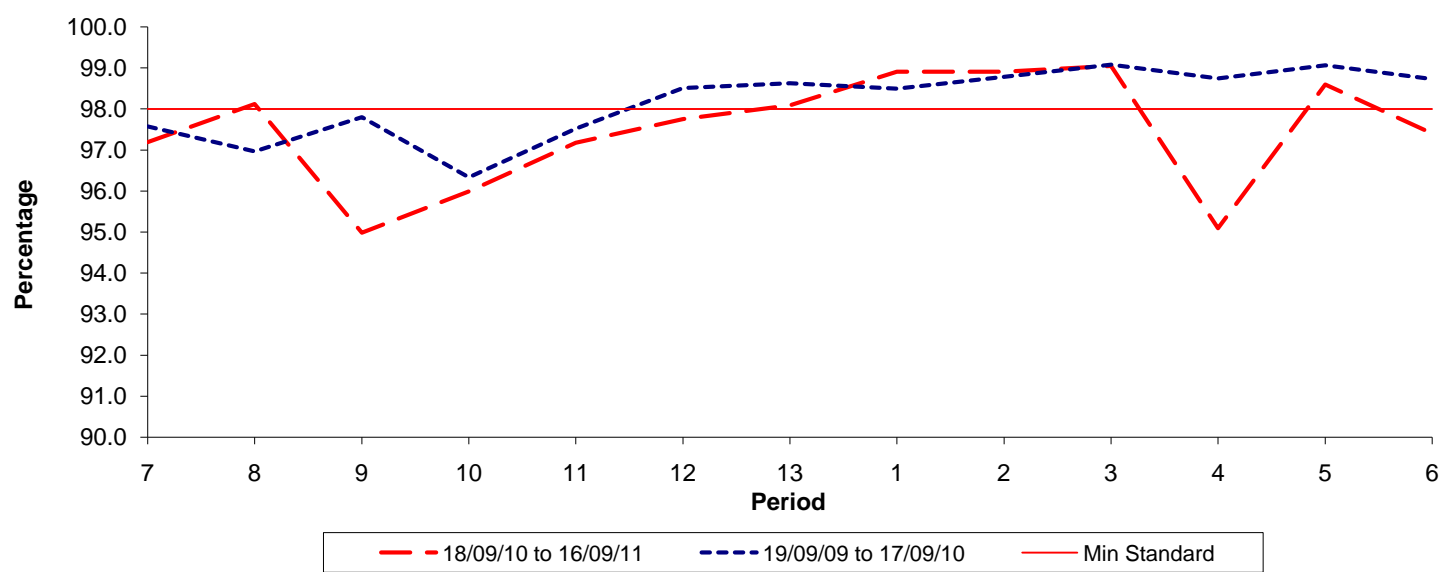


Date Range / Period	7	8	9	10	11	12	13	1	2	3	4	5	6
18/09/10 to 16/09/11	0.92	1.36	1.49	1.46	1.29	1.00	0.88	0.82	0.86	0.92	1.33	1.17	1.13
19/09/09 to 17/09/10	1.11	1.36	1.51	1.46	1.23	0.89	0.91	1.05	1.21	1.20	1.10	0.94	0.92
Min Standard	1.30	1.30	1.30	1.30	1.30	1.30	1.30	1.30	1.30	1.30	1.30	1.30	1.30

Excess Waiting Time figures are based on 12 weeks data

**Kilometre Performance**

**% Kilometres Operated**



Date Range / Period	7	8	9	10	11	12	13	1	2	3	4	5	6
18/09/10 to 16/09/11	97.19	98.12	94.98	95.99	97.17	97.75	98.09	98.91	98.91	99.05	95.09	98.60	97.40
19/09/09 to 17/09/10	97.58	96.97	97.80	96.33	97.52	98.51	98.63	98.50	98.79	99.08	98.75	99.07	98.73
Min Standard	98.00	98.00	98.00	98.00	98.00	98.00	98.00	98.00	98.00	98.00	98.00	98.00	98.00

Kilometre figures are based on 4 weeks data