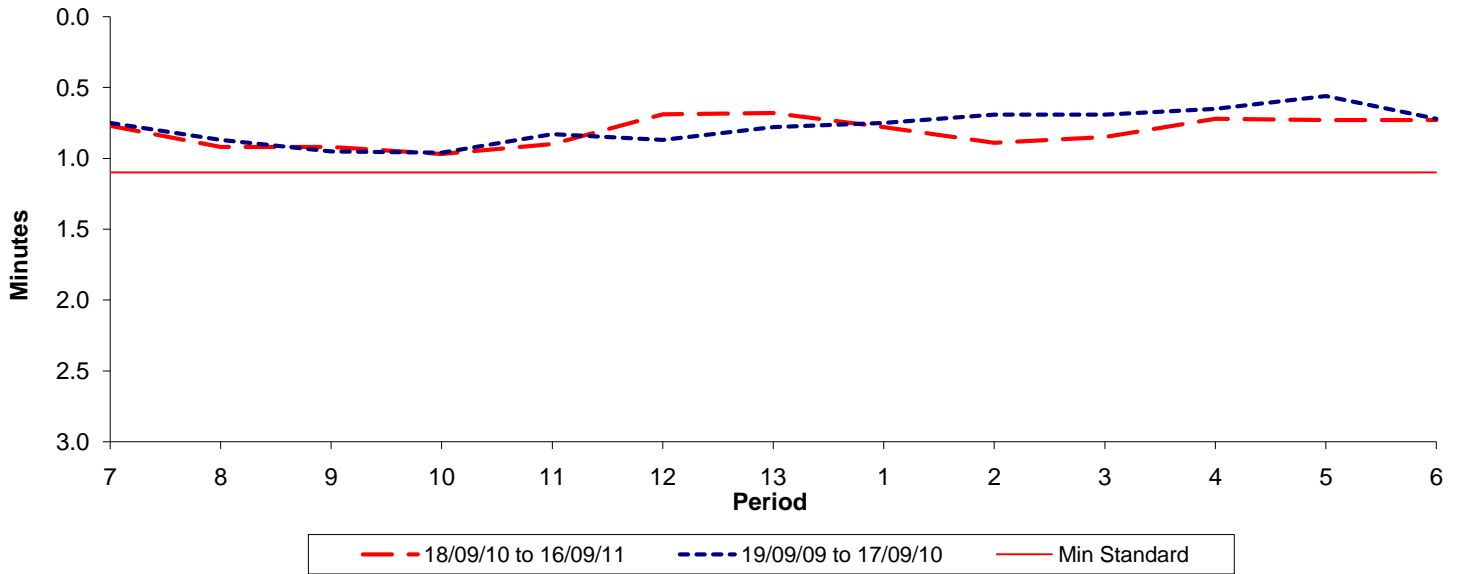




**Reliability Performance ( High Frequency )**

Excess Waiting Time (minutes)

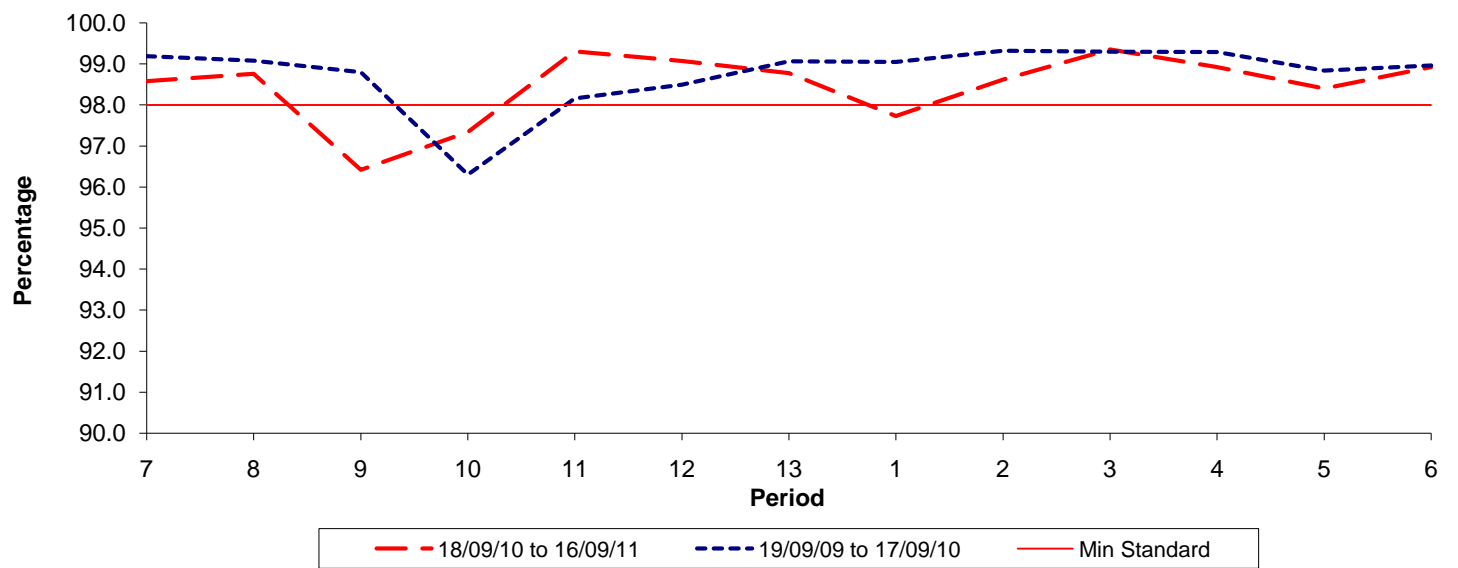


Date Range / Period	7	8	9	10	11	12	13	1	2	3	4	5	6
18/09/10 to 16/09/11	0.77	0.92	0.92	0.97	0.90	0.69	0.68	0.78	0.89	0.85	0.72	0.73	0.73
19/09/09 to 17/09/10	0.75	0.87	0.95	0.96	0.83	0.87	0.78	0.75	0.69	0.69	0.65	0.56	0.72
Min Standard	1.10	1.10	1.10	1.10	1.10	1.10	1.10	1.10	1.10	1.10	1.10	1.10	1.10

Excess Waiting Time figures are based on 12 weeks data

**Kilometre Performance**

% Kilometres Operated



Date Range / Period	7	8	9	10	11	12	13	1	2	3	4	5	6
18/09/10 to 16/09/11	98.58	98.76	96.42	97.34	99.30	99.07	98.77	97.73	98.62	99.35	98.92	98.40	98.92
19/09/09 to 17/09/10	99.19	99.08	98.80	96.30	98.16	98.49	99.06	99.05	99.32	99.30	99.29	98.84	98.96
Min Standard	98.00	98.00	98.00	98.00	98.00	98.00	98.00	98.00	98.00	98.00	98.00	98.00	98.00

Kilometre figures are based on 4 weeks data