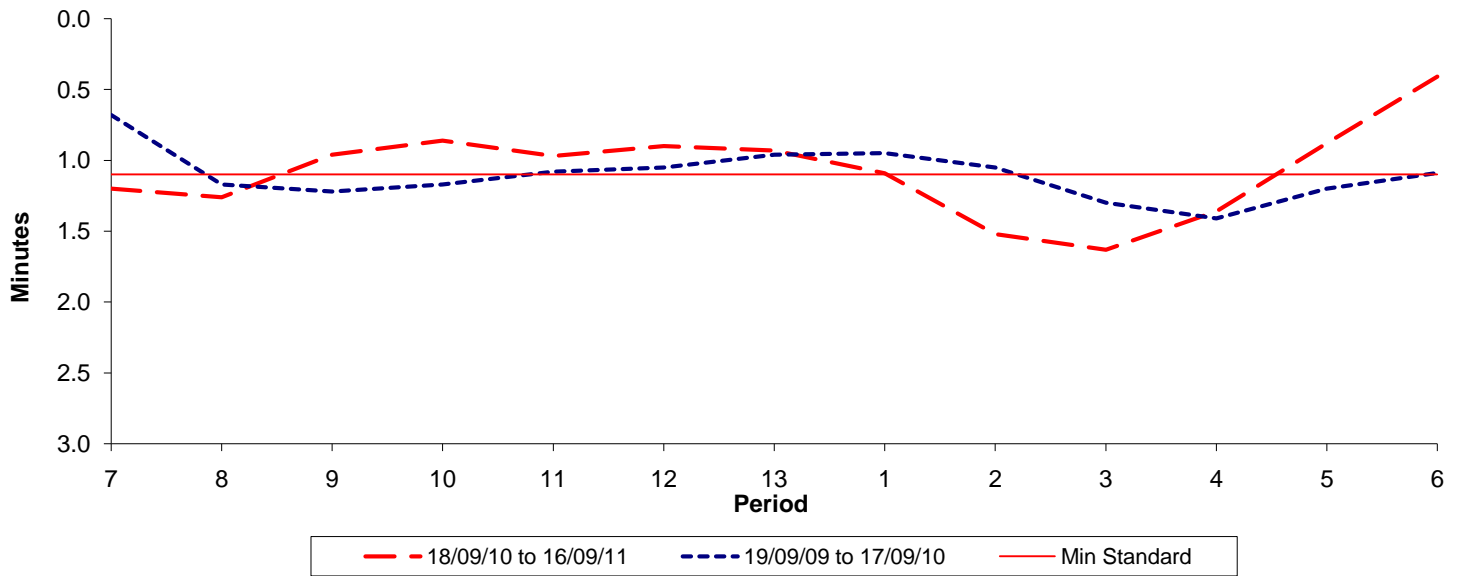




Reliability Performance (High Frequency)

Excess Waiting Time (minutes)

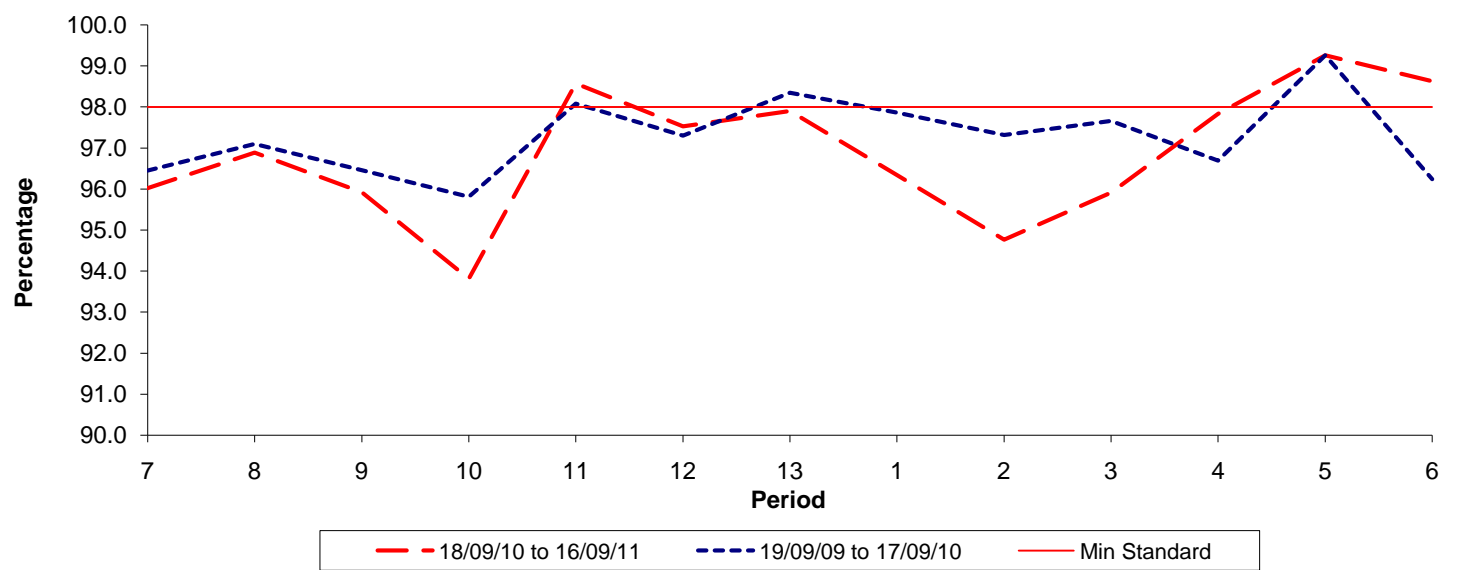


Date Range / Period	7	8	9	10	11	12	13	1	2	3	4	5	6
18/09/10 to 16/09/11	1.20	1.26	0.96	0.86	0.97	0.90	0.93	1.09	1.52	1.63	1.36	0.88	0.41
19/09/09 to 17/09/10	0.68	1.17	1.22	1.17	1.08	1.05	0.96	0.95	1.05	1.30	1.41	1.20	1.09
Min Standard	1.10	1.10	1.10	1.10	1.10	1.10	1.10	1.10	1.10	1.10	1.10	1.10	1.10

Excess Waiting Time figures are based on 12 weeks data

Kilometre Performance

% Kilometres Operated



Date Range / Period	7	8	9	10	11	12	13	1	2	3	4	5	6
18/09/10 to 16/09/11	96.02	96.89	95.92	93.81	98.57	97.53	97.90	96.34	94.76	95.91	97.83	99.26	98.63
19/09/09 to 17/09/10	96.45	97.10	96.46	95.81	98.08	97.30	98.35	97.86	97.32	97.66	96.69	99.26	96.24
Min Standard	98.00	98.00	98.00	98.00	98.00	98.00	98.00	98.00	98.00	98.00	98.00	98.00	98.00

Kilometre figures are based on 4 weeks data