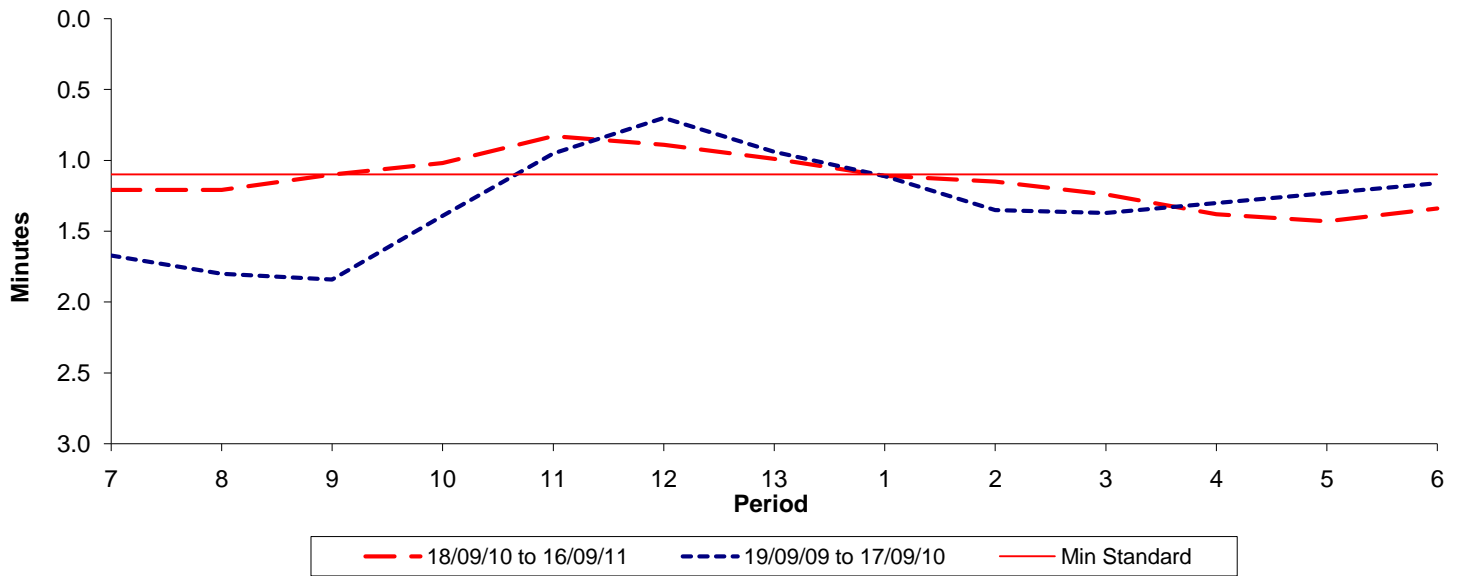




Reliability Performance (High Frequency)

Excess Waiting Time (minutes)

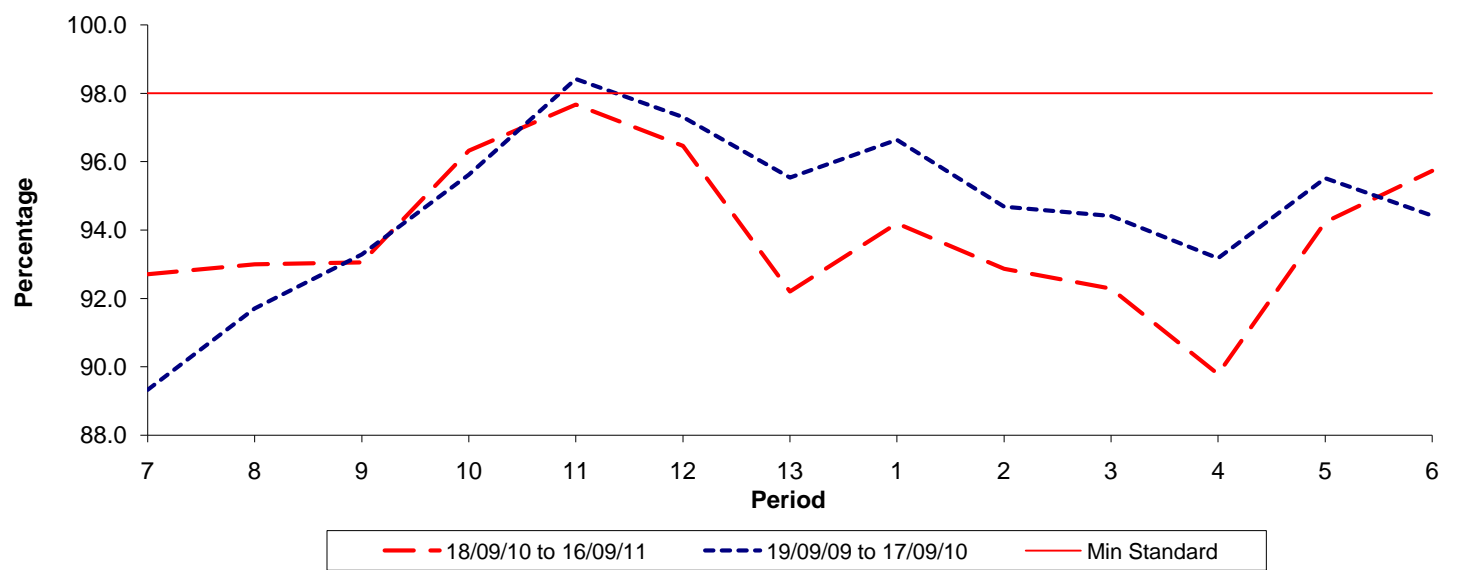


Date Range / Period	7	8	9	10	11	12	13	1	2	3	4	5	6
18/09/10 to 16/09/11	1.21	1.21	1.10	1.02	0.83	0.89	0.99	1.11	1.15	1.24	1.38	1.43	1.34
19/09/09 to 17/09/10	1.67	1.80	1.84	1.39	0.95	0.70	0.94	1.11	1.35	1.37	1.30	1.23	1.16
Min Standard	1.10	1.10	1.10	1.10	1.10	1.10	1.10	1.10	1.10	1.10	1.10	1.10	1.10

Excess Waiting Time figures are based on 12 weeks data

Kilometre Performance

% Kilometres Operated



Date Range / Period	7	8	9	10	11	12	13	1	2	3	4	5	6
18/09/10 to 16/09/11	92.70	92.99	93.05	96.32	97.67	96.47	92.20	94.19	92.86	92.28	89.78	94.23	95.73
19/09/09 to 17/09/10	89.33	91.71	93.29	95.62	98.42	97.31	95.54	96.64	94.68	94.41	93.18	95.52	94.42
Min Standard	98.00	98.00	98.00	98.00	98.00	98.00	98.00	98.00	98.00	98.00	98.00	98.00	98.00

Kilometre figures are based on 4 weeks data